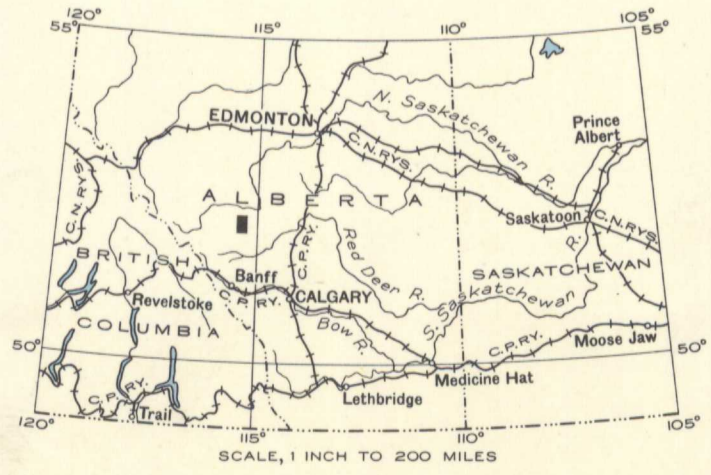
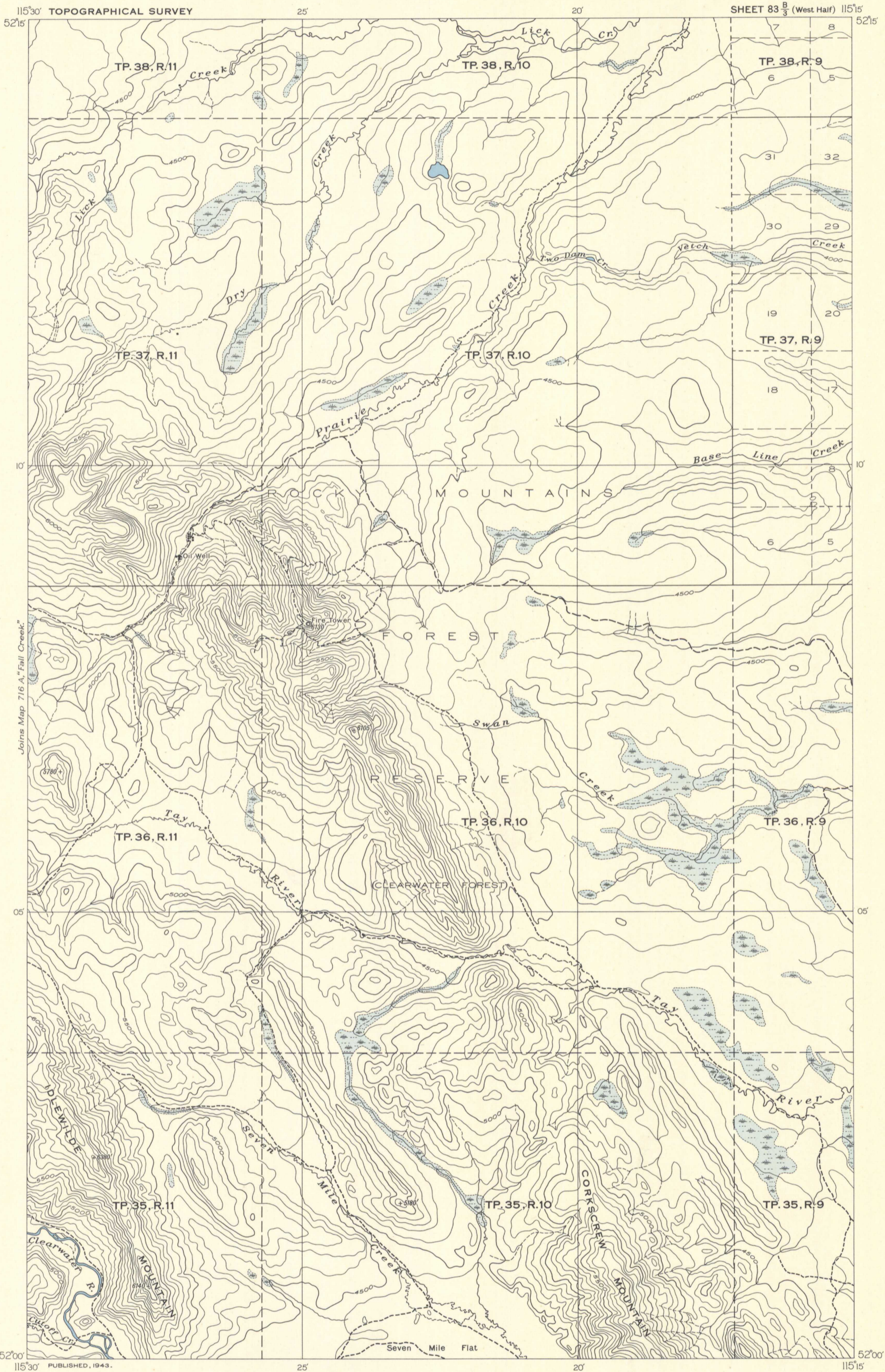


CANADA  
 DEPARTMENT OF MINES AND RESOURCES  
 MINES AND GEOLOGY BRANCH  
 BUREAU OF GEOLOGY AND TOPOGRAPHY



MAP 718A  
**TAY RIVER**  
 WEST OF FIFTH MERIDIAN  
 ALBERTA

Scale, 63,360 or 1 Inch to 1 Mile  
 Miles  
 Approximate magnetic declination, 25°15' East.

- LEGEND
- Road not well travelled .....
  - Trail and building .....
  - Abandoned building .....
  - Township boundary (surveyed) .....
  - Township boundary (unsurveyed) .....
  - Section line .....
  - Forest Reserve boundary .....
  - Intermittent stream .....
  - Marsh .....
  - Contours (interval 100 feet) .....
  - Height in feet above Mean sea-level .....

Surveys and topography by the Topographical Survey, 1940.  
 Cartography by the Drafting and Reproducing Division, 1942.

NOT TO BE TAKEN FROM LIBRARY  
 NE PAS SORTIR DE LA BIBLIOTHÈQUE



5.1.1 Tay River, Alberta  
 A1Top  
 map 718A

118A