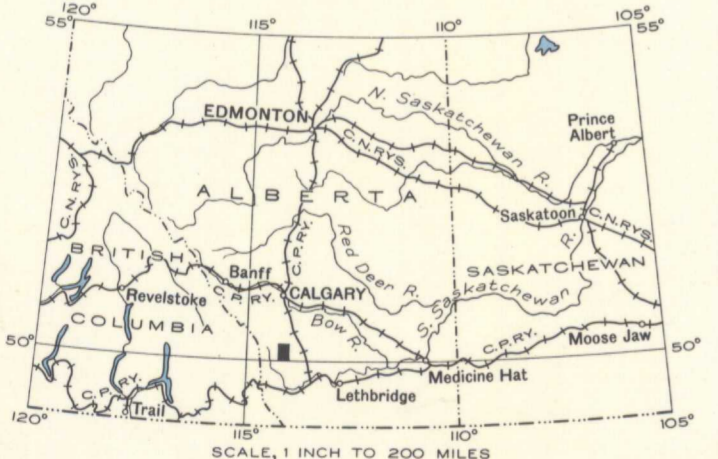
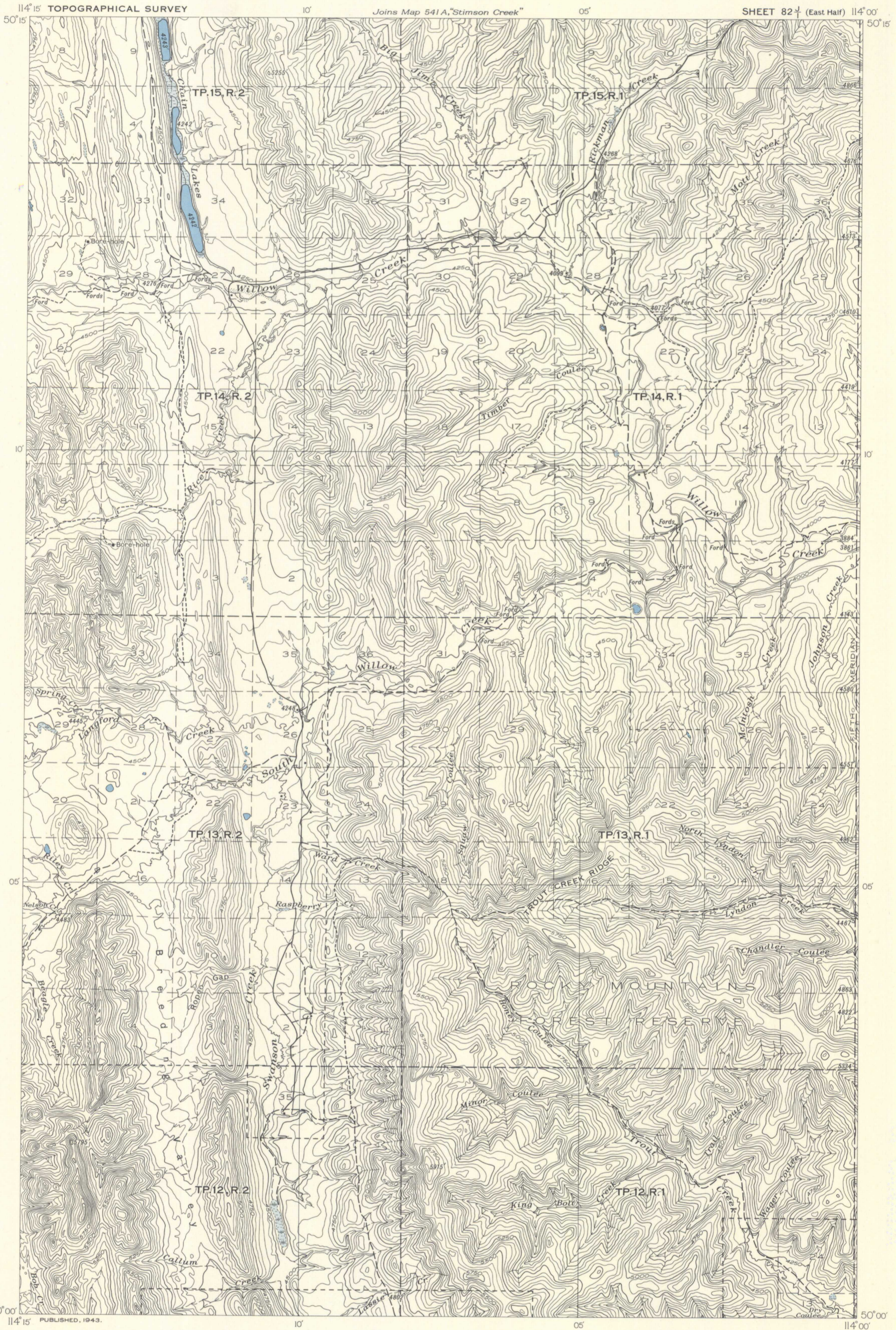


CANADA
 DEPARTMENT OF MINES AND RESOURCES
 MINES AND GEOLOGY BRANCH
 BUREAU OF GEOLOGY AND TOPOGRAPHY



MAP 720A
LANGFORD CREEK
 WEST OF FIFTH MERIDIAN
 ALBERTA
 Scale, 63,360 or 1 Inch to 1 Mile
 Approximate magnetic declination, 22°30' East.

LEGEND

- Road and buildings
- Road not well travelled
- Trail
- Township boundary
- Section line
- Forest Reserve boundary
- Intermittent lake and stream
- Marsh
- Sand or gravel
- Contours (interval 50 feet)
- Depression contour
- Height in feet above Mean sea-level

Compiled by the Topographical Survey, 1941, from aerial photographs taken in August and September, 1939, Cartography by the Drafting and Reproducing Division, 1942.

**NOT TO BE TAKEN FROM LIBRARY
 PAS SORTIR DE LA BIBLIOTHÈQUE**

5.1.1 Alta. Langford Creek
 A1 Top. Sheet 82 J/1 (east half)

720A