

OF 1661  
P 5

# LINE LP85-04 S.P. 101 TO 1942

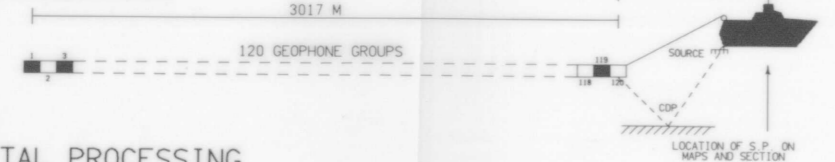
## PACIFIC GEOSCIENCE CENTRE WEST COAST VANCOUVER ISLAND

### MIGRATED STACK

#### FIELD DATA

VESSEL: M/V EDWARD D. VETTER  
 DATE SHOT: MAY 1985  
 NAVIGATION: PRIMARY - SPOT  
 SECONDARY - LORAN C  
 DATA TYPE: SEISMIC REFLECTION  
 RECORDING SYSTEM: 36 DISK V  
 RECORDING FORMAT: 1800 B P I  
 RECORDING DENSITY: 18.0 SEC / 4 MSEC  
 RECORD LENGTH / SAMPLE PERIOD: 17.0 / 0.00125  
 GAIN CONTROL MODE: 17P  
 GAIN CONSTANT / FINAL GAIN: 18000 / 18000  
 RECORDING FILTERS: LOW CUT 3.5 Hz @ 18 DB/OCTAVE  
 HIGH CUT 84 Hz @ 20 DB/OCTAVE  
 TANK FREQUENCY: 1200 Hz  
 SEISMIC SOURCE: TUNED AIRGUN ARRAY ( 4 ELEMENTS )  
 NORMAL: 10000 PSI @ 20000 S  
 AVERAGE SOURCE DEPTH: 100 METRES / 330 FT  
 CABLE LENGTH / AVG DEPTH: 3017 METRES / 10000 FT  
 NUMBER OF GROUPS: 120  
 GEOPHONES PER GROUP / SPACING: 11 / 11 METRES  
 NORMAL GROUP INTERVAL: 30 METRES  
 SHOTPOINT INTERVAL: 30 METRES  
 MULTIPLICITY: 30  
 AVERAGE NEAR GROUP OFFSET: 250 METRES  
 FATHOMER: 10000 / 10000

#### SPREAD DIAGRAM

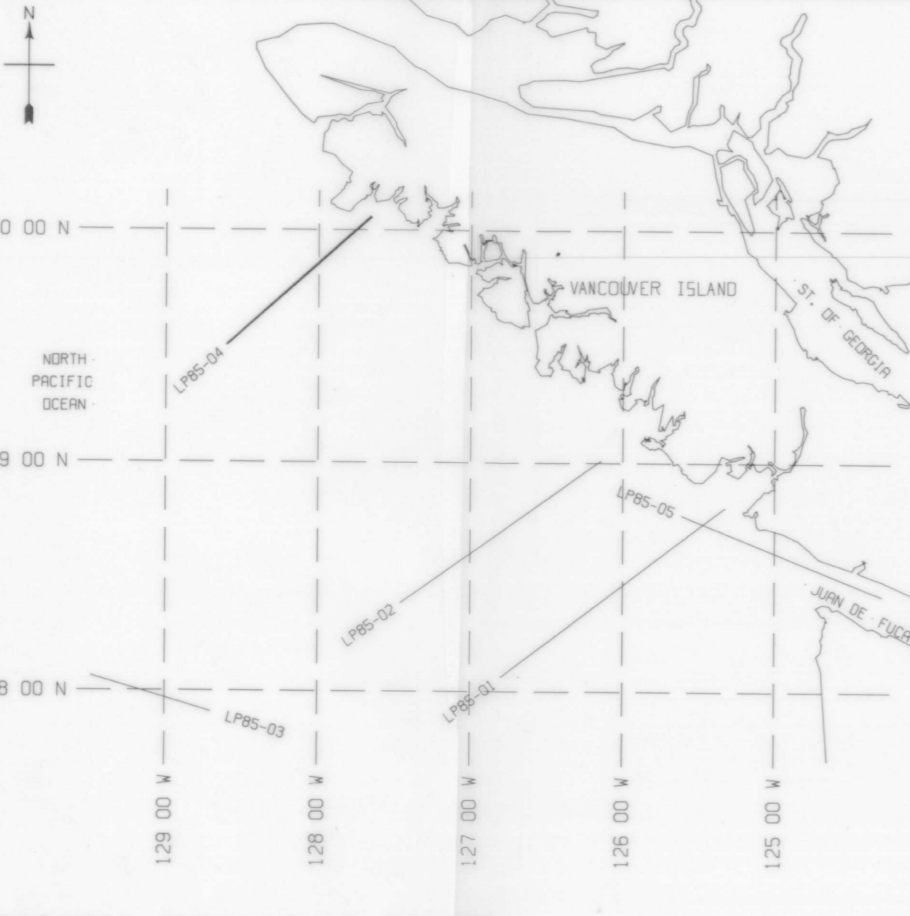
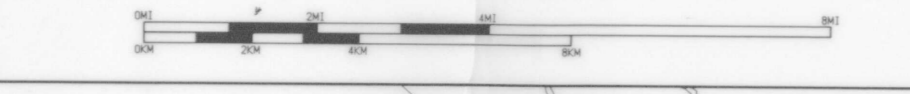


#### DIGITAL PROCESSING

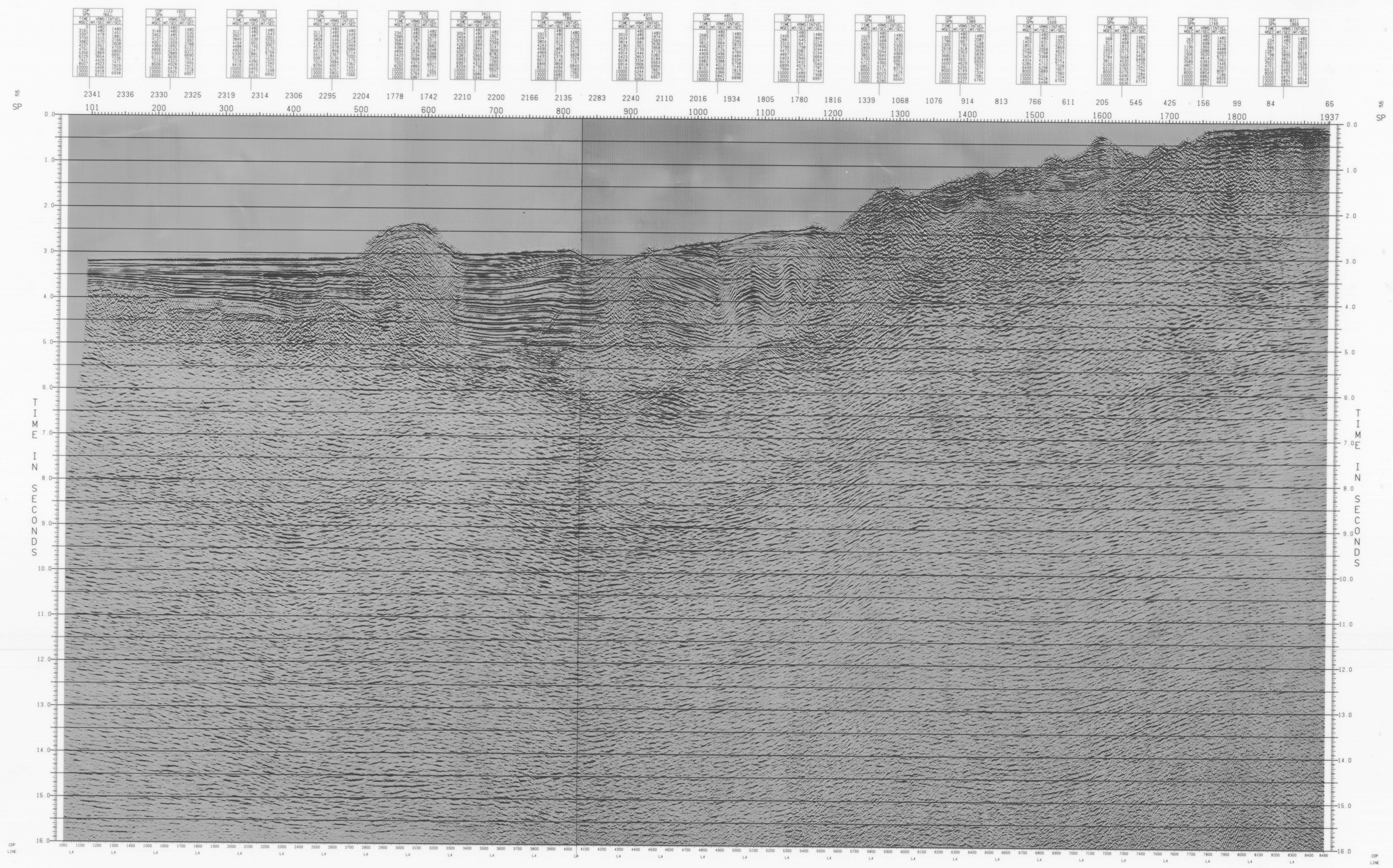
DEMULTIPLIX: PROCESSED TO 18.0 SEC  
 4 MSEC TO 0 MSEC / NEW PHASE 3  
 TRUE AMPLITUDE RECOVERY: 3.5 DB/SEC FROM 0 TO 0.0 SEC  
 DATA - WATER BOTTOM  
 PRE DECONVOLUTION WAVE: MULTIPLY BY FIRST BREAK ENERGY  
 VELOCITY FILTER ( SHOT DOMAIN ): 0.0 TO 1.0 SEC / 1.0 SEC / 1.0 SEC  
 DESIGNATION ( SHOT DOMAIN ): STANDARD MARINE MODE  
 EQUALIZATION: WIDE TRACE DESIGN DATA  
 DEMULTIPLIX ( SP 101 - 1942 ): WATER BOTTOM AND RESOLVE MULTIPLE ATTENUATION  
 RECONVOLUTION ( SP 1940 - 1942 ): DATA - WATER BOTTOM  
 VELOCITY ANALYSIS: VELOCITY EVERY 3 KM FOR STACK FUNCTION  
 FIRST 8 SECONDS OF DATA: STACK FUNCTION DERIVED FROM REFRACTION DATA  
 NORMAL MOVEOUT CORRECTIONS: SEE STACK SECTION HEADER FOR VELOCITIES  
 TRACE WAVE: FULL FOLD CONSIDERED ON TAN TRACE AT 4.0 SEC  
 COMMON DEPTH POINT STACK: 30 FOLD / TYPE 4 DIVERSITY POWER  
 RECONVOLUTION: 1.0 SEC OPERATOR GAP = 2W  
 VELOCITY ANALYSIS: AUTO CORR START/END TIMES = 50/10000 MSEC  
 DECONVOLUTION: DATA - WATER BOTTOM  
 DECONVOLUTION: KIRCHOFF WAVE EQUATION  
 DECONVOLUTION: 30 SECONDS  
 DECONVOLUTION: 3/7 - 26/32 @ 0 SEC

#### DISPLAY

HORIZONTAL SCALE: 48.0 TR/IN 26.88887 TR/CM  
 VERTICAL SCALE: 1.0 FT/IN 0.254 CM  
 FILTERS: NORMAL  
 TRACE TYPE - BEAS: MVAW 0.0 PERCENT  
 DATA: SEA LEVEL  
 DISPLAY UNIT: 0.888818 CM



PACIFIC GEOSCIENCE CENTRE  
 02 APR 1986  
 PARTY 64080  
 GEOPHYSICAL SERVICE INC.  
 (A DIVISION OF TEXAS INSTRUMENTS INC.)  
 PROCESSING CHECKED BY: \_\_\_\_\_



This map has been produced from a scanned version of the original map.  
 Reproduction par numérisation d'une carte sur papier.