

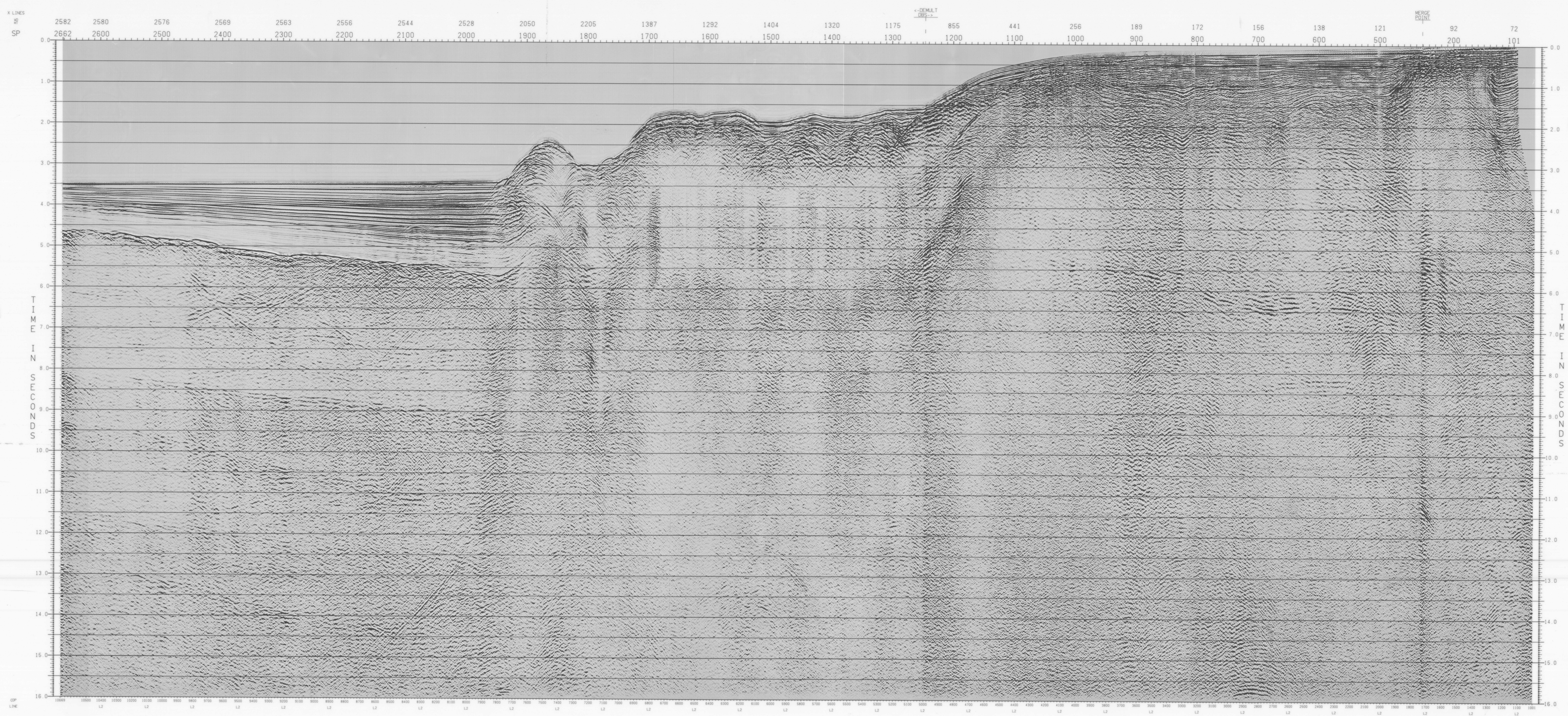
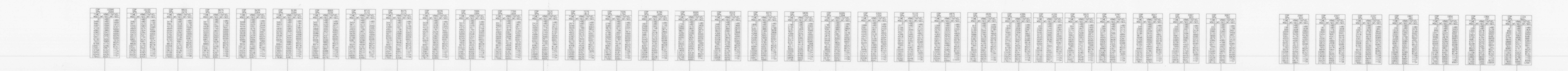
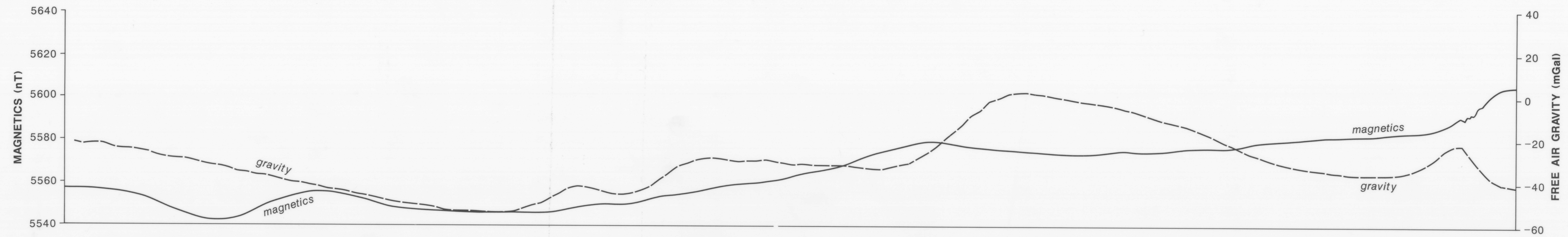
MARINE MULTICHANNEL SEISMIC REFLECTION, GRAVITY AND MAGNETIC PROFILES

Vancouver Island Continental Margin and Juan de Fuca Ridge

Line 2

G.S.C. Open File No. 1661
Geological Survey of Canada

100 West Pender St., Vancouver, B.C. V6B 1R8



LINE LP85-02 & LP85-02A
S.P. 101 TO 251, 431 TO 2662

PACIFIC GEOSCIENCE CENTRE
WEST COAST VANCOUVER ISLAND

FINAL STACK

FIELD DATA

SPREAD DIAGRAM

DIGITAL PROCESSING

DISPLAY

PACIFIC GEOSCIENCE CENTRE

GEOPHYSICAL SERVICE INC.
(A DIVISION OF TEXAS INSTRUMENTS INC.)



This map has been produced from a scanned version of the original map.
Reproduction par numérisation d'une carte sur papier.