

LEGEND
 Coloured legend blocks indicate map units that appear on this map

- QUATERNARY**
- PLEISTOCENE AND RECENT**
 - Qnp** Modern alluvium; gravel, sand, silt; minor muck and peat; mostly floodplain and channel deposits
 - Qaf** Fan deposits (including associated contiguous sediments); poorly sorted gravel, sand, silt, and clay
 - Qc** Organic deposits; muck; mucky peat; peat; and marl
 - Qoc** Slump deposits; clay; silt; sand; minor gravel; landslides or earthflows in unconsolidated material
 - Qn** Fluvial deposits; gravel, sand; minor silt; terraces intermediate in time and space between modern or near modern terraces, and terraces associated with deglaciation
 - Qp** Lacustrine deposits; clay; silt; and sand; minor gravel near former shorelines; deposits are generally 4 m thick and mask the underlying topography
 - Qtm** Fluvial deposits (non-ice contact); gravel, sand; silt; deposits of the higher terraces, associated with final deglaciation
 - Qm** Fluvial deposits (ice contact); gravel, sand; silt; mainly poorly sorted. Some fill and lacustrine deposits; includes kames, kame terraces, crevasse fillings, eskers
 - Qmd** Moraine deposits (undisturbed); drumlinoid fill; minor contiguous and enclosed glaciofluvial deposits
 - Qd** Glacial drift (undifferentiated); mainly thin silt, gravel, sand; and silt, over bedrock
- Q** Undivided (structure section only)

- MESOZOIC AND TERTIARY**
- UPPER CRETACEOUS AND PALEOCENE**
 - KTs** SIFTON FORMATION; conglomerate; minor sandstone

- DEVONIAN**
- MIDDLE DEVONIAN**
 - DOVERY FORMATION (D01-D02)**
 - D02** Upper unit; limestone; argillaceous limestone; massive secondary dolomite locally
 - D01** Lower unit; argillaceous limestone; calcareous shale; minor limestone; quartz sandstone; red shale locally; massive
 - LOWER DEVONIAN**
 - STONE FORMATION (D51-D52)**
 - D52** Upper unit; light grey, silty dolomite
 - D51** Lower unit; tan weathering, silty dolomite; quartz sandstone; dolomitic sandstone

- SILURIAN AND DEVONIAN**
- UPPER SILURIAN AND LOWER DEVONIAN**
 - MURDOCH-MACDONELL FORMATION**; light grey dolomite; sandy dolomite; minor breccia
 - SDM**

- ORDOVICIAN AND SILURIAN**
- UPPER ORDOVICIAN AND LOWER SILURIAN**
 - OSNs** Limestone, dolomite and shale unit; Quartzite and dolomite unit; and KODIA FORMATION; silty and argillaceous dolomite with common chert nodules; quartzite; dolomitic quartzite; argillaceous limestone; nodular, cherty dolomite; shale

- ORDOVICIAN**
- MIDDLE ORDOVICIAN**
 - SANDY FORMATION**; dolomite; oncoidic dolomite; minor sandstone
 - OS**

- LOWER ORDOVICIAN**
- KECHIKA GROUP (Ok1-Ok3)**
 - Ok3** Upper unit; argillaceous, silty, nodular to wavy bedded limestone; minor calcareous argillite
 - Ok2** Middle unit; wavy bedded, silty limestone; minor quartz sandstone (structure section only)
 - Ok1** Lower unit; cleaved, argillaceous, silty limestone; nodular, silty limestone (structure section only)
- Ok** KECHIKA GROUP; undivided

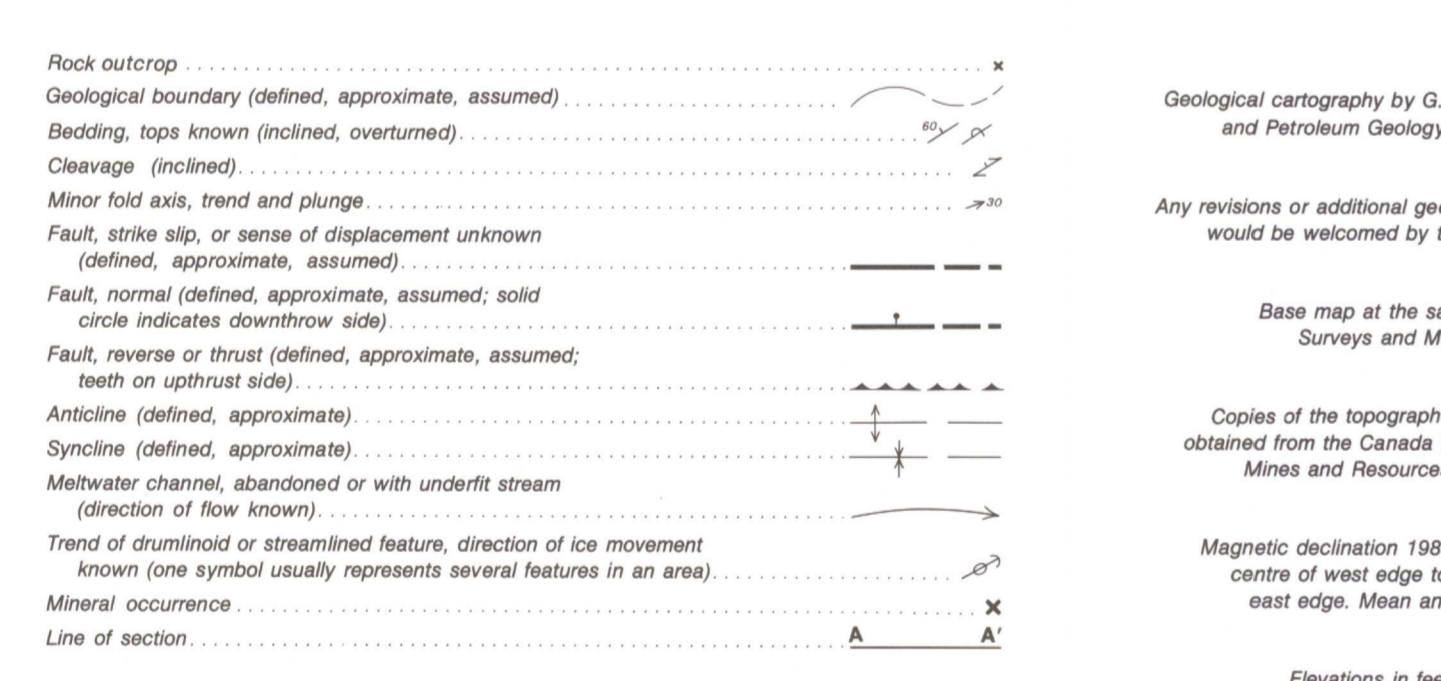
- CAMBRIAN**
- UPPER CAMBRIAN**
 - LYNX FORMATION (CL1-CL2)**
 - CL2** Upper unit; calcareous argillite and argillite with limestone nodules; silty, argillaceous, nodular to wavy bedded limestone; minor limestone
 - CL1** Lower unit; dolomite; sandy to silty dolomite; minor quartz sandstone at base

- MIDDLE CAMBRIAN**
- TITKANA AND ARCTOMYS FORMATIONS**; light grey dolomite, commonly laminated (Titkana); tan weathering silty dolomite, black and red shale; argillaceous dolomite (Arctomys)
 - CSA** SNAKE INDIAN, TITKANA AND ARCTOMYS FORMATIONS; undivided

- LOWER CAMBRIAN**
- SNAKE INDIAN FORMATION**; red shale; tan weathering dolomite, sandy dolomite; dolomitic quartz sandstone at base
 - CSL** SNAKE INDIAN, TITKANA AND ARCTOMYS FORMATIONS; undivided (structure section only)

- LOWER CAMBRIAN**
- COG GROUP**; quartzite; dolomite and argillaceous quartzite; shale; minor dolomite; rare pebble conglomerate
 - CGG**

- UPPER PROTEROZOIC**
- MISINCHINKA GROUP (PM1-PM3)**
 - PM3** Upper clastic unit; grey, silty argillite; quartzite; siltite
 - PM2** Middle carbonate unit; limestone; dolomite; sandy limestone and dolomite; quartzite; minor argillite
 - PM1** Lower clastic unit; phyllite; siltite; diamictite; teldgaptic quartzite; minor carbonate

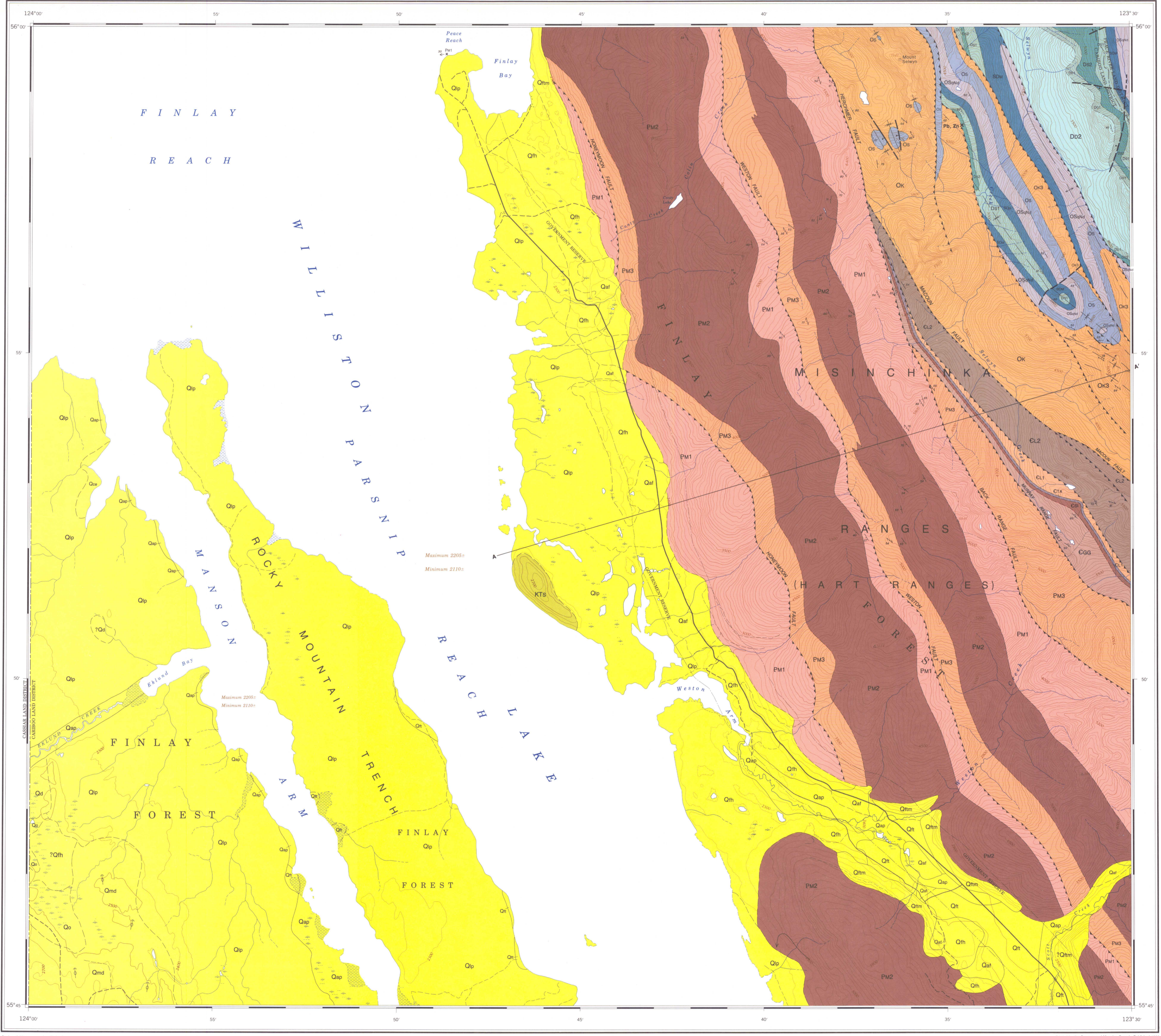
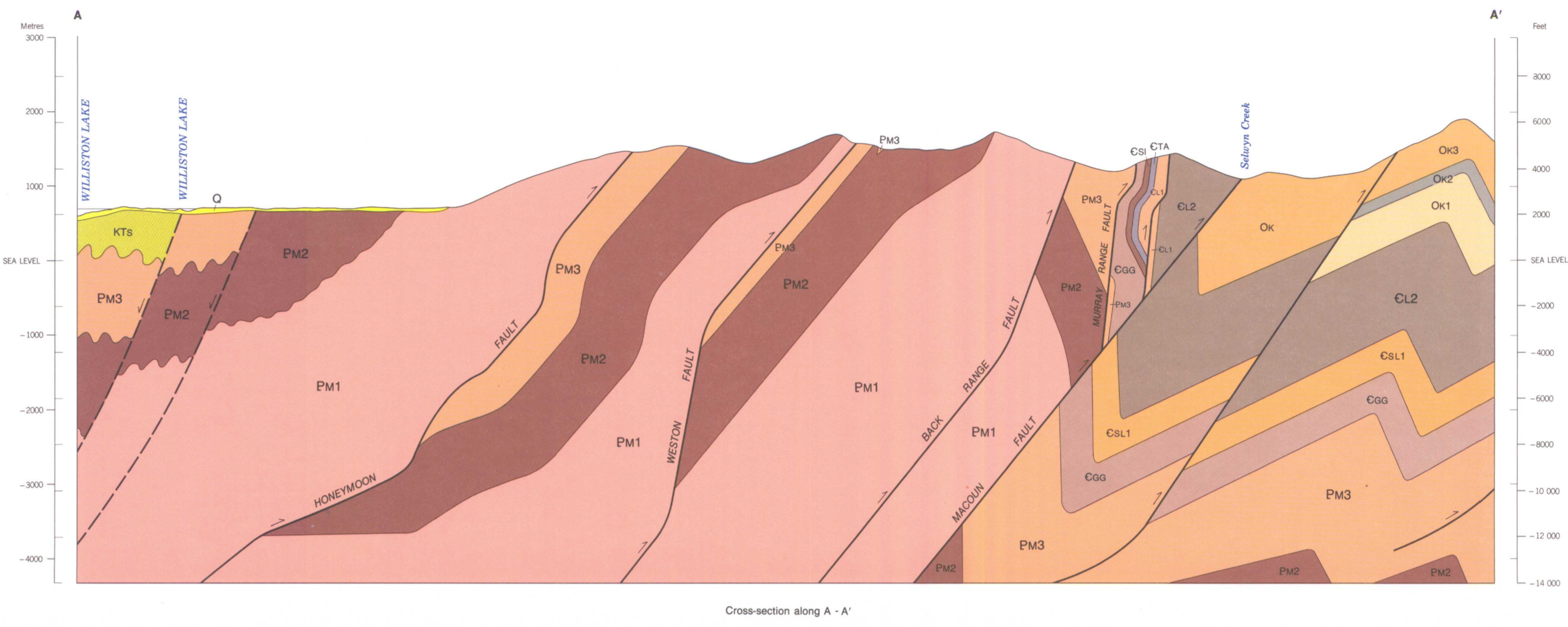
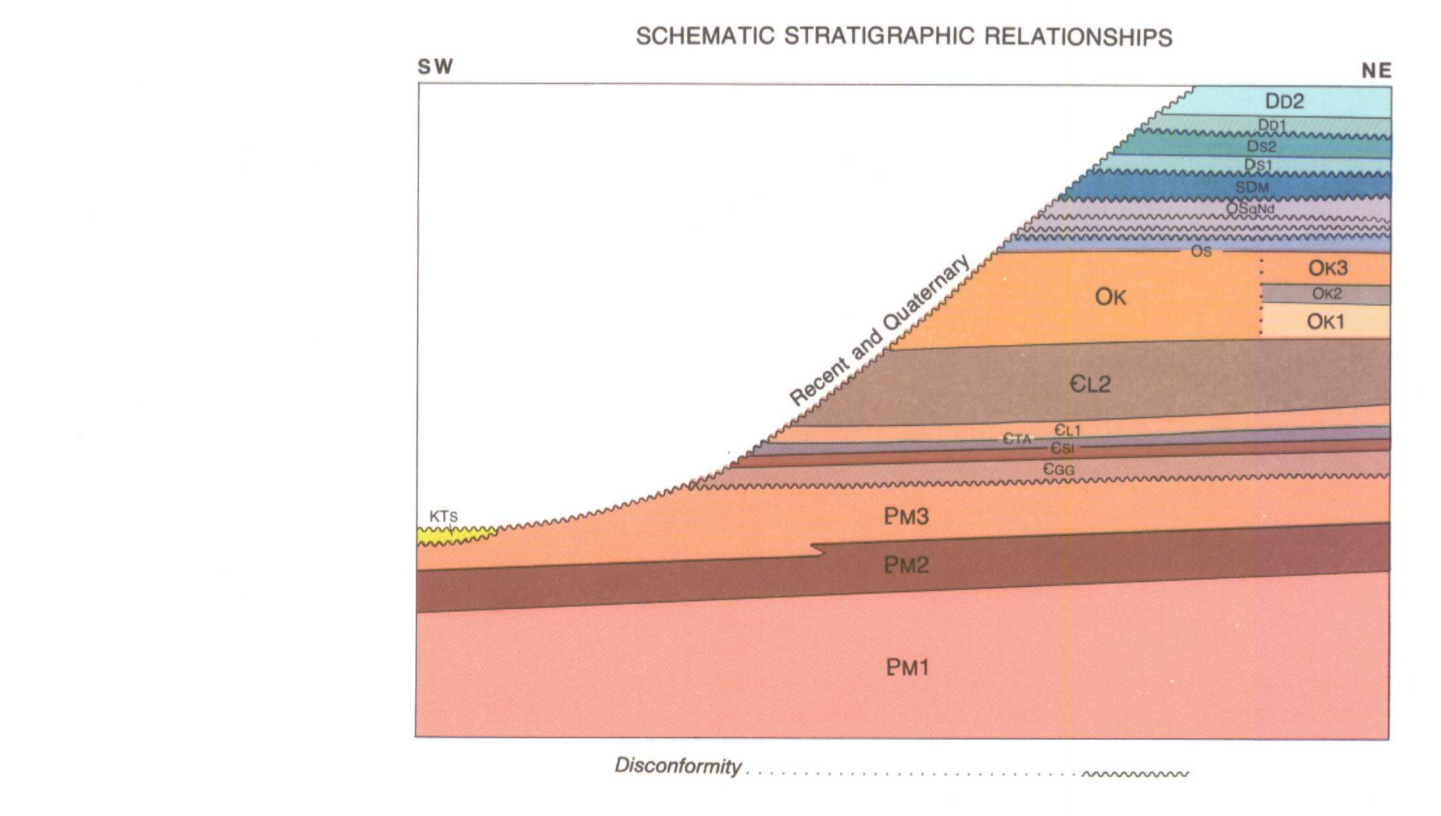


MINERALS

Lead Pb Zinc Zn

Geological compilation by M.E. McMechan, 1981

Sources of information:
 Bedrock geology based on field observations by M.E. McMechan, 1980
 Surficial geology and landforms from Geological Survey of Canada, Map 1362A (N.W. Rutter, 1974)



MAP 1625A
 GEOLOGY
MOUNT SELWYN
 BRITISH COLUMBIA
 Scale 1:50 000

Transverse Mercator Projection
 © Crown Copyrights reserved

INDEX MAP

LIBRARY / BIBLIOTHÈQUE
 AGS 7 1987
 GEOLOGICAL SURVEY
 COMMISSION GÉOLOGIQUE

NATIONAL TRANSVERSE MERCATOR SYSTEM REFERENCE AND INDEX TO SURVEYING GEOLOGICAL SURVEY OF CANADA MAPS

