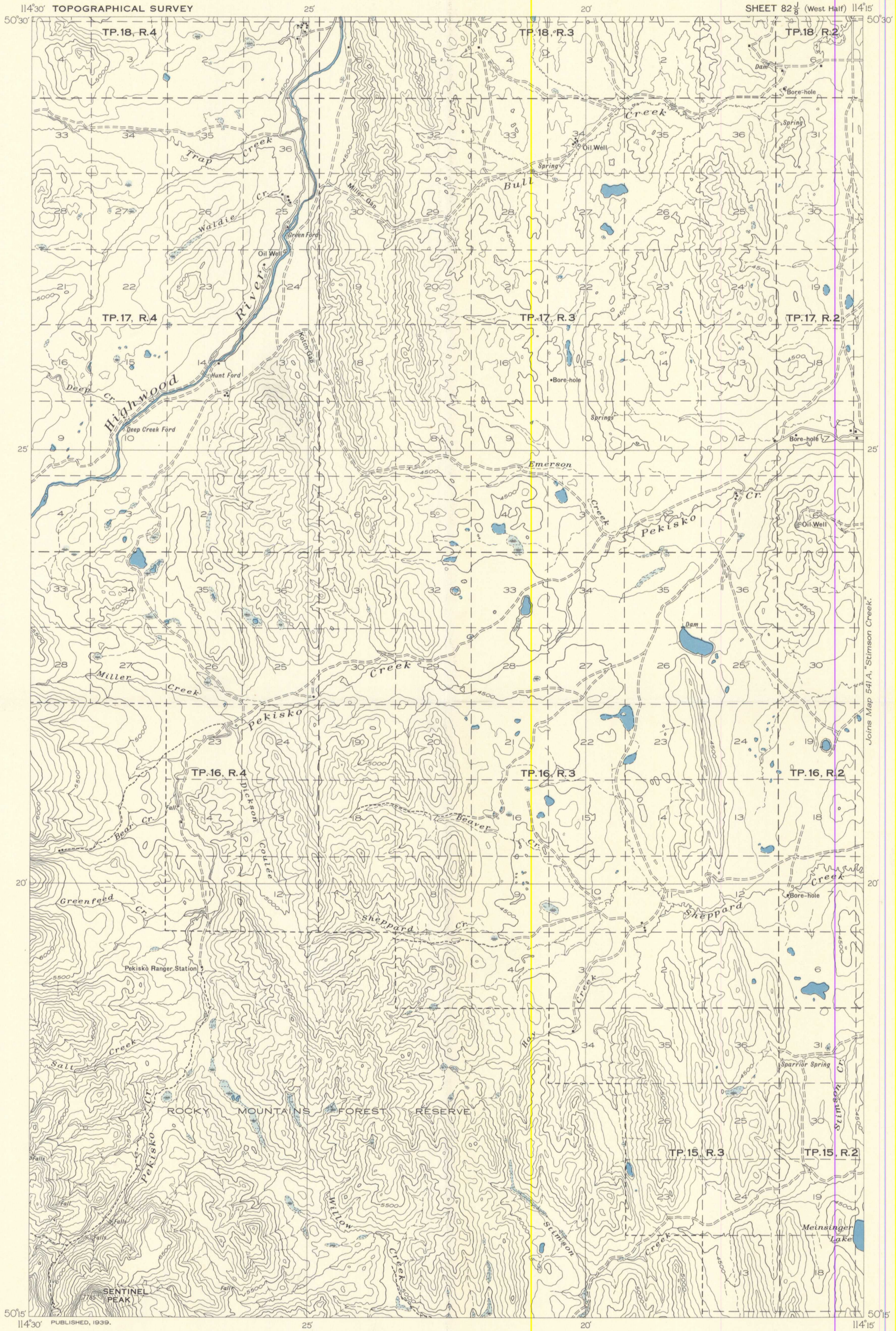


CANADA
 DEPARTMENT OF MINES AND RESOURCES
 MINES AND GEOLOGY BRANCH
 BUREAU OF GEOLOGY AND TOPOGRAPHY



MAP 542A
PEKISKO CREEK
 ALBERTA

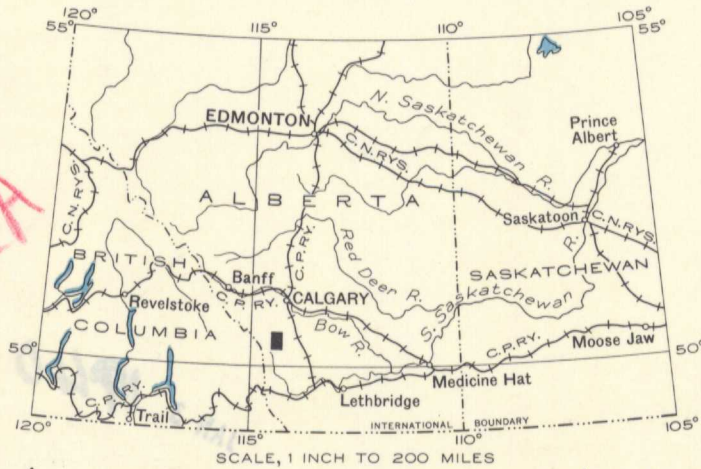
Scale, 63,360 or 1 Inch to 1 Mile
 Miles

Elevations referred to Mean sea-level
 Approximate magnetic declination, 23'15" East.

LEGEND

- Road and buildings
- Road not well travelled
- Road along township boundary
- Bush road or trail
- Church
- Abandoned building
- Township boundary
- Section line
- Forest reserve boundary
- Intermittent lake and stream
- Marsh
- Contours (interval 100 feet)
- Depression contour

Surveys and Topography by the Topographical Survey, 1934 and 1937. Cartography by the Drafting and Reproducing Division, 1939.



5.1.1 Pekisko Creek, Alberta
 A, Top map 542A

NOT TO BE TAKEN FROM LIBRARY
 NE PAS SORTIR DE LA BIBLIOTHÈQUE

542A