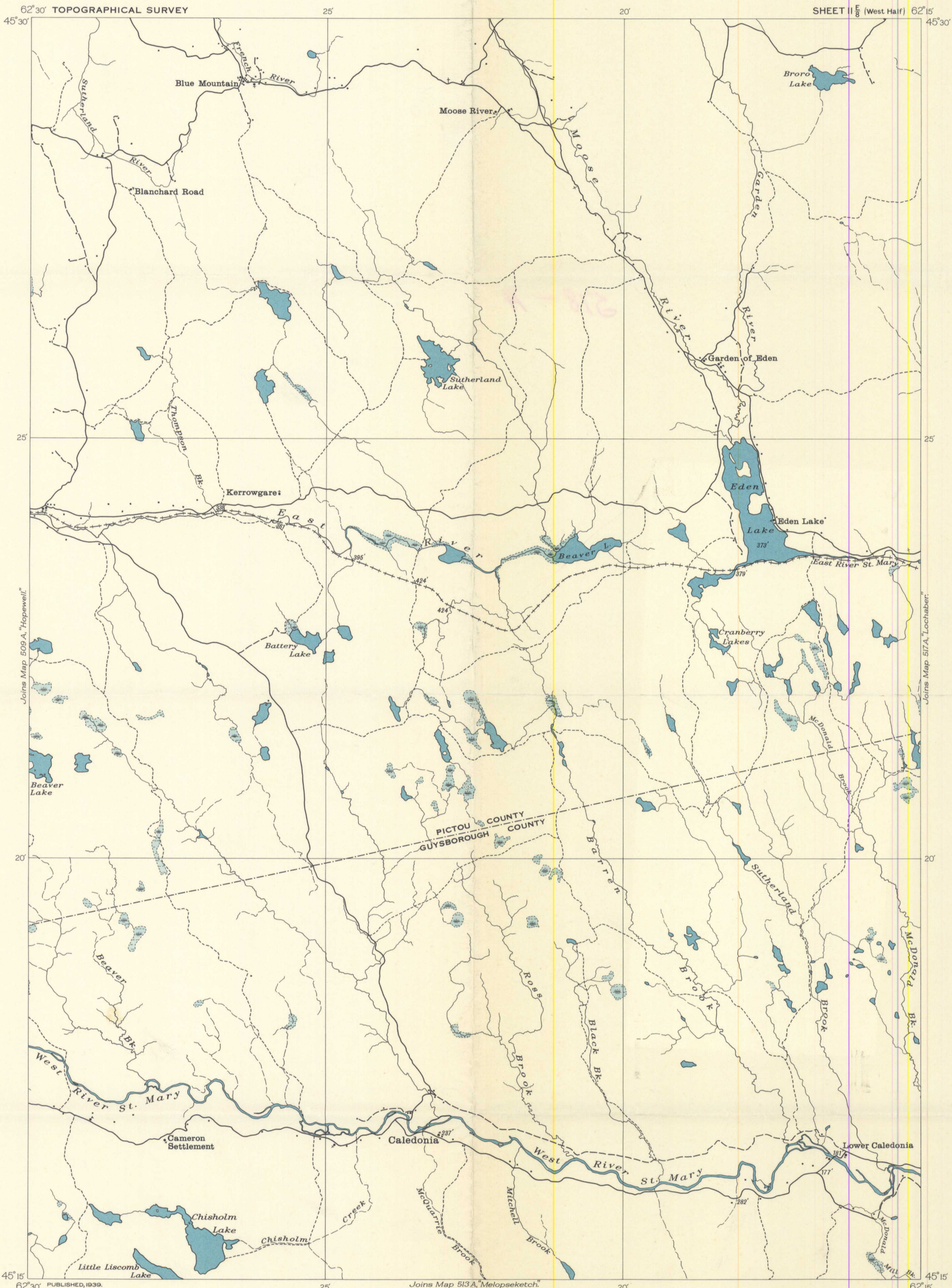


CANADA
 DEPARTMENT OF MINES AND RESOURCES
 MINES AND GEOLOGY BRANCH
 BUREAU OF GEOLOGY AND TOPOGRAPHY



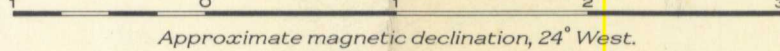
Joins Map 509 A, "Hopewell"

Joins Map 517 A, "Lochaber"

MAP 518A

MOOSE RIVER
 PICTOU AND GUYSBOROUGH COUNTIES
 NOVA SCOTIA

Scale, 63,360 or 1 Inch to 1 Mile



Approximate magnetic declination, 24° West.

LEGEND

- Road and buildings
- Road not well travelled
- Bush road or trail
- Railway (under construction)
- Church
- School
- Post Office
- Cemetery
- Triangulation station
- County boundary
- Stream (position approximate)
- Marsh
- Height in feet above Mean sea-level

Compiled by the Topographical Survey, 1938, from aerial photographs taken by the Royal Canadian Air Force. Cartography by the Drafting and Reproducing Division, 1939.



NOVA SCOTIA
 1938 DE 11 W

NOT TO BE TAKEN FROM LIBRARY
 NE PAS SORTIR DE LA BIBLIOTHÈQUE
 336 B/43
 518A