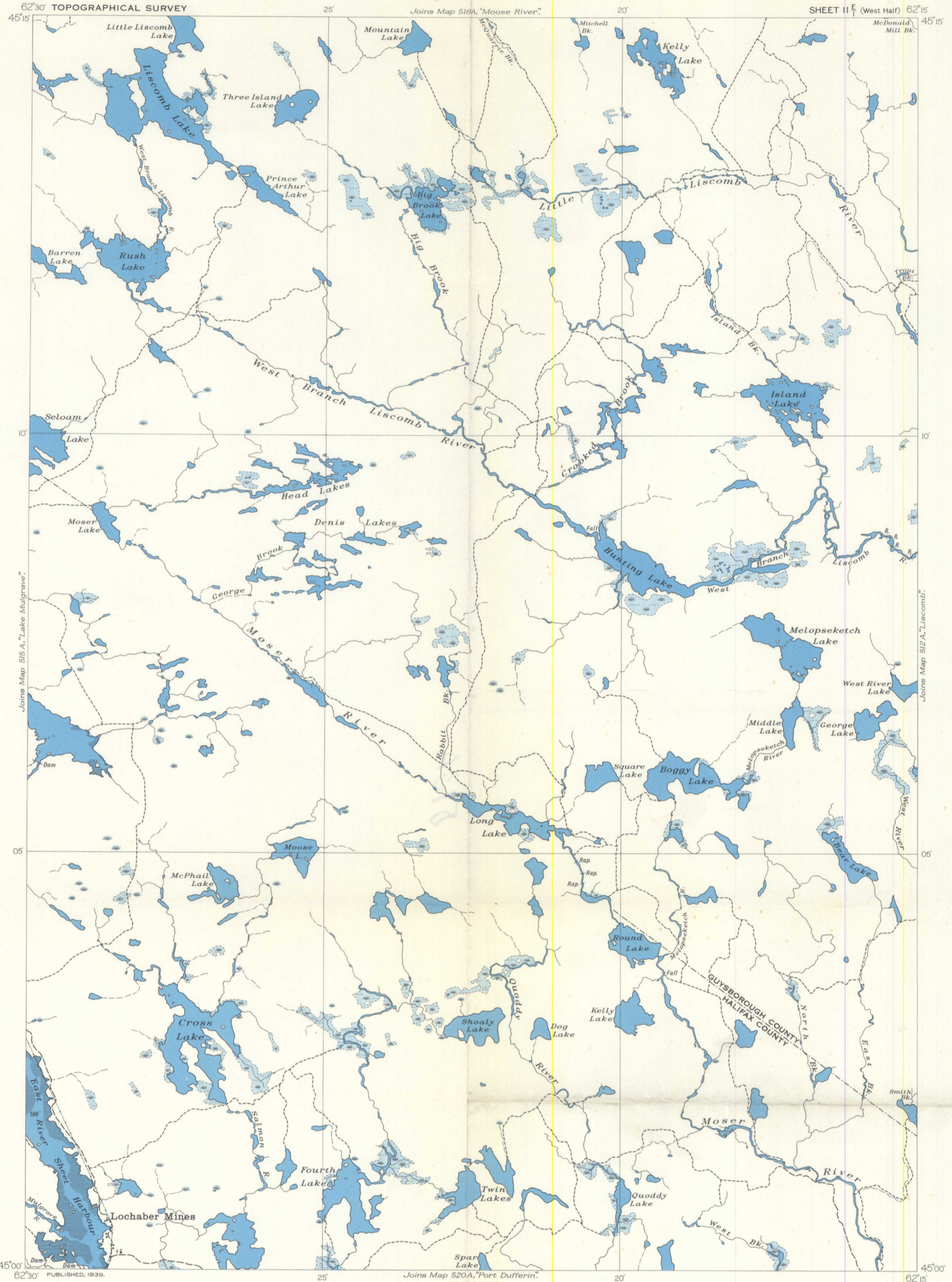


CANADA
 DEPARTMENT OF MINES AND RESOURCES
 MINES AND GEOLOGY BRANCH
 BUREAU OF GEOLOGY AND TOPOGRAPHY

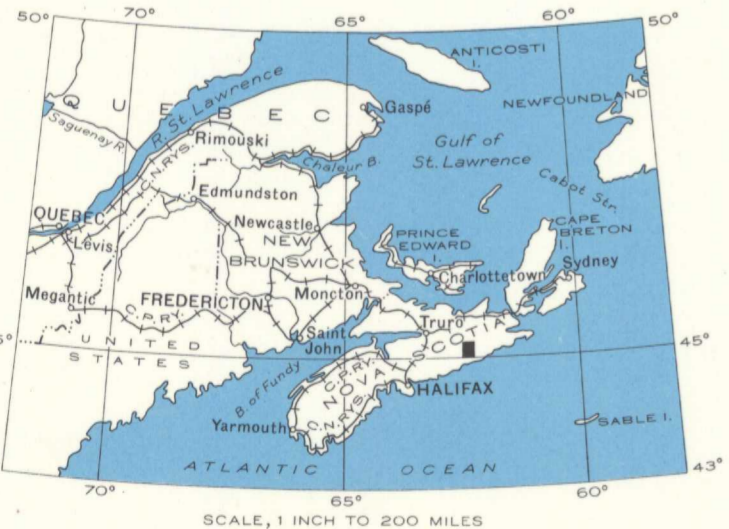


MAP 513 A
MELOPSEKETCH
 GUYSBOROUGH AND HALIFAX COUNTIES
 NOVA SCOTIA
 Scale, 63,360 or 1 Inch to 1 Mile
 Approximate magnetic declination, 24° West.

LEGEND
 Building
 Road not well travelled
 Bush road or trail
 Power line
 Church
 Post Office
 Cemetery
 County boundary (position approx.)
 Stream (position approximate)
 Fall and rapid
 Marsh
 Drowned land
 Height in feet above Mean sea-level 196'

Compiled by the Topographical Survey, 1938, from aerial photographs taken by the Royal Canadian Air Force. Cartography by the Drafting and Reproducing Division, 1939.

**NOT TO BE TAKEN FROM LIBRARY
 NE PAS SORTIR DE LA BIBLIOTHÈQUE** 513A



This map has been produced from a scanned version of the original map
 Reproduction par numérisation d'une carte sur papier