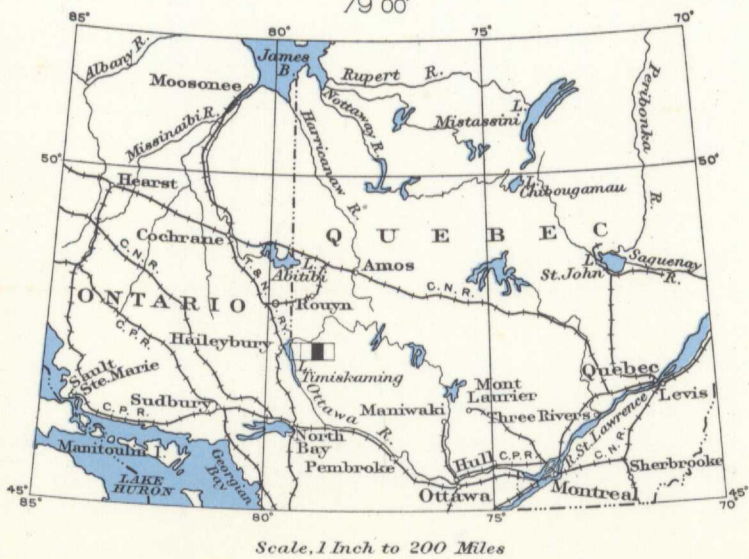
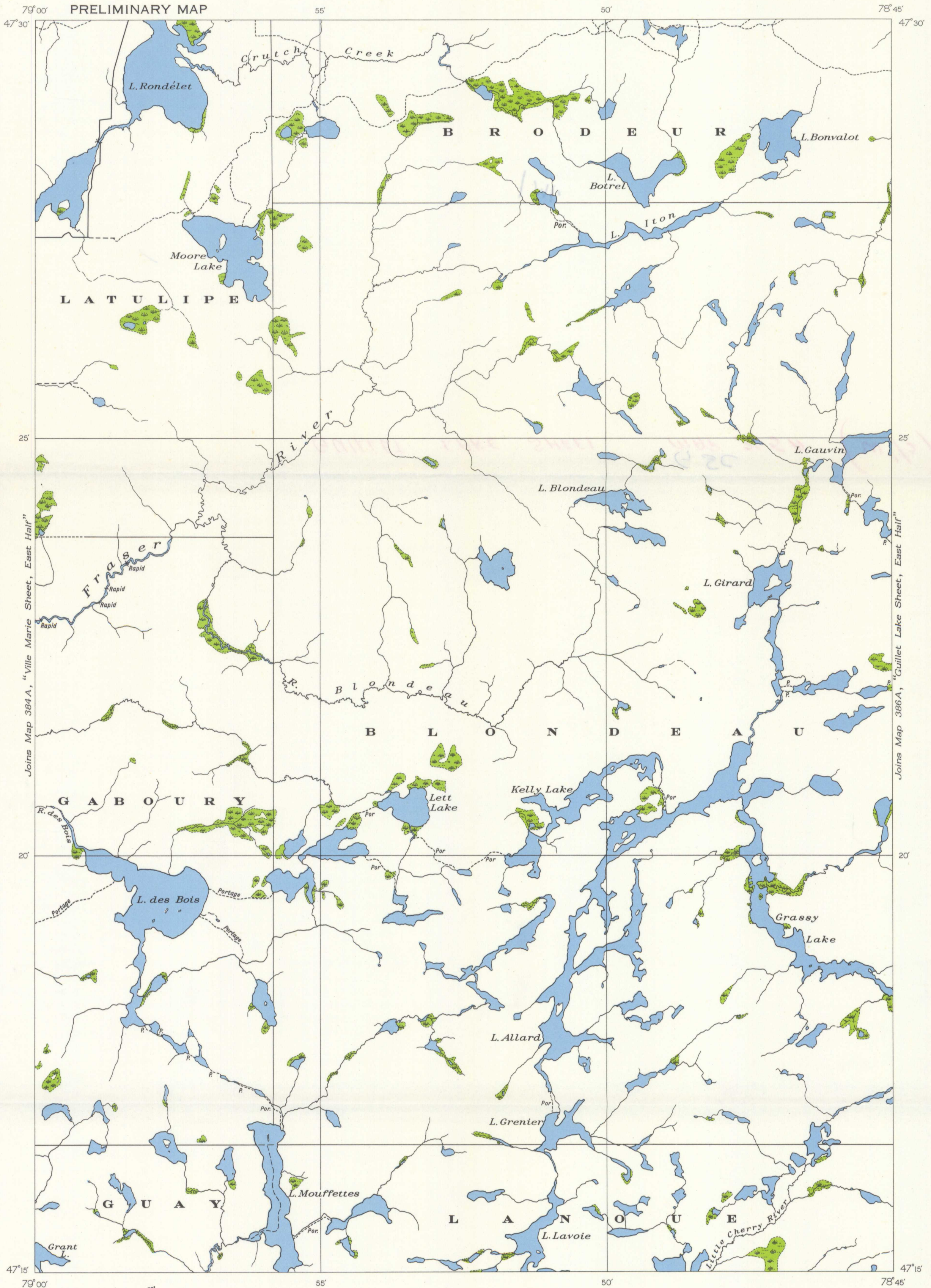


Canada
Department of Mines

HON. T. A. CRERAR, MINISTER, CHARLES CAMSELL, DEPUTY MINISTER.

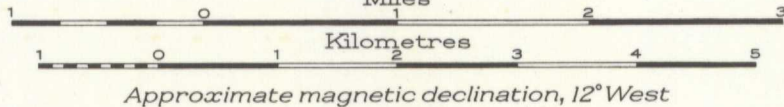
BUREAU OF ECONOMIC GEOLOGY
GEOLOGICAL SURVEY

Issued 1936



MAP 385A
GUILLET LAKE SHEET
(WEST HALF)
TÉMISCAMINGUE COUNTY
QUEBEC

Scale, 63360 or 1 Inch to 1 Mile
Miles



Approximate magnetic declination, 12" West

LEGEND

- Road
- Road not well travelled
- Bush road, trail or portage
- Bridge
- Township boundary
- Marsh

SOURCES OF INFORMATION

Air photography; surveys by Topographical Division, Geological Survey, Department of Mines; plans by Department of Lands and Forests, Quebec.

NOT TO BE TAKEN FROM LIBRARY
NE PAS SORTIR DE LA BIBLIOTHÈQUE

385A