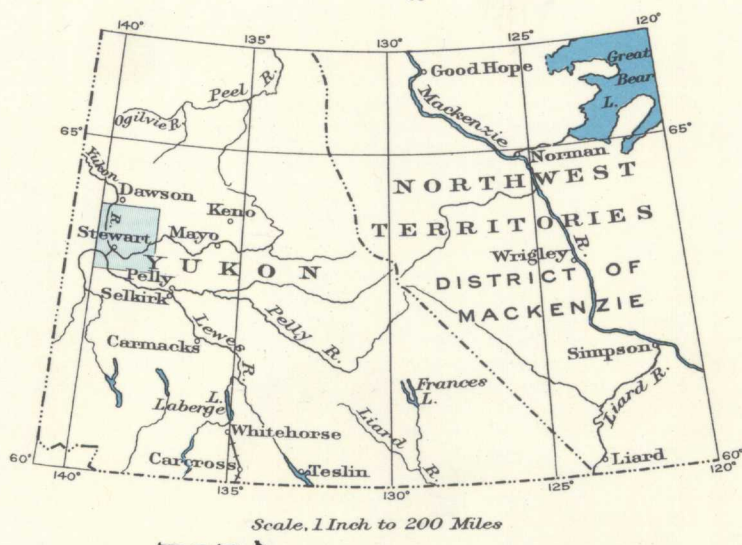
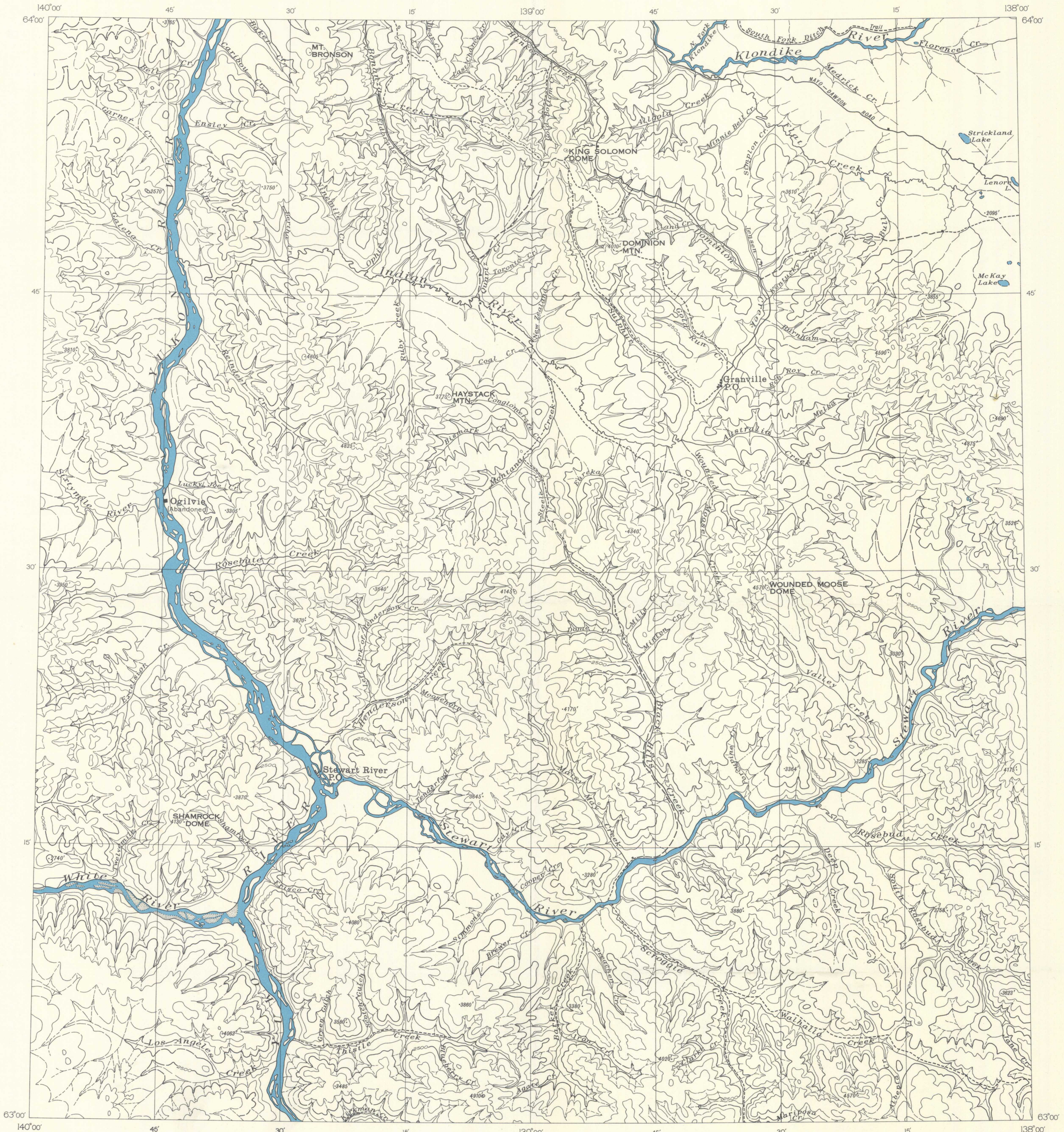
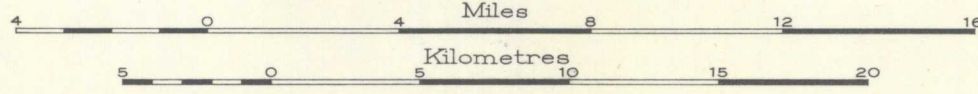


Issued 1936



MAP 373A  
**OGILVIE SHEET**  
 YUKON TERRITORY

Scale, 253,440 or 1 Inch to 4 Miles



Contour interval 500 Feet.  
 Approximate magnetic declination, 34° East.

LEGEND

- Road, (well travelled) .....
- Road, (not well travelled) .....
- Trail .....
- Post Office .....
- Sandbar .....
- Height in feet .....

Surveys and topography by the Topographical  
 Division, Geological Survey, Department of Mines.

**NOT TO BE TAKEN FROM LIBRARY  
 NE PAS SORTIR DE LA BIBLIOTHÈQUE**

★  
 373A

5.1.11 Ogilvie map 373A  
 A, Top.