

Canada  
Department of Mines

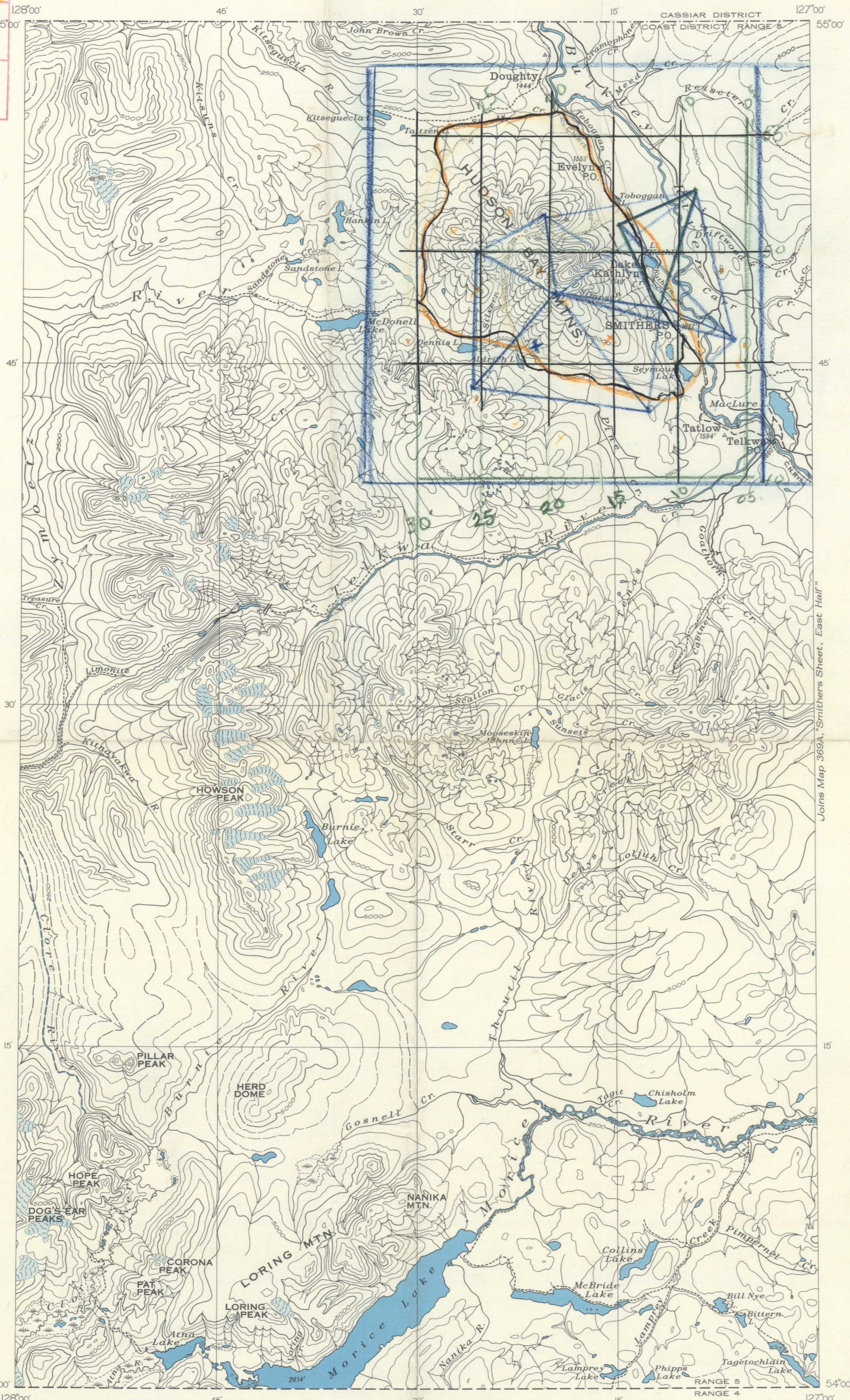
HON. T. A. CRERAR, MINISTER, CHARLES CAMSELL, DEPUTY MINISTER.

BUREAU OF ECONOMIC GEOLOGY  
GEOLOGICAL SURVEY

Issued 1936

93L W 1/2

SMITHERS  
93L



Joins Map 369A, Smithers Sheet, East Half

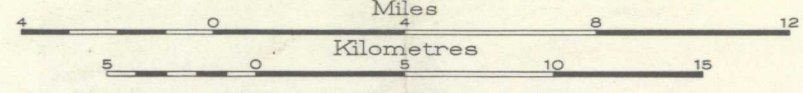
93L  
A-47



Scale, 1 Inch to 200 Miles

MAP 368A  
**SMITHERS SHEET**  
(WEST HALF)  
COAST DISTRICT  
BRITISH COLUMBIA

Scale, 253475 or 1 Inch to 4 Miles



Contour interval 500 Feet.  
Approximate magnetic declination, 29°30' East.

LEGEND

- Road (well travelled) . . . . .
- Road (not well travelled) . . . . .
- Trail . . . . .
- School . . . . .
- Post Office . . . . .
- Mine tunnel . . . . .
- Primary Triangulation Station . . . . .
- Glacier . . . . .
- Elevation in feet . . . . . 2614'

Surveys and topography by the Topographical Division, Geological Survey, Department of Mines; and from information supplied by the Department of Lands, British Columbia.

93L W 1/2

368A