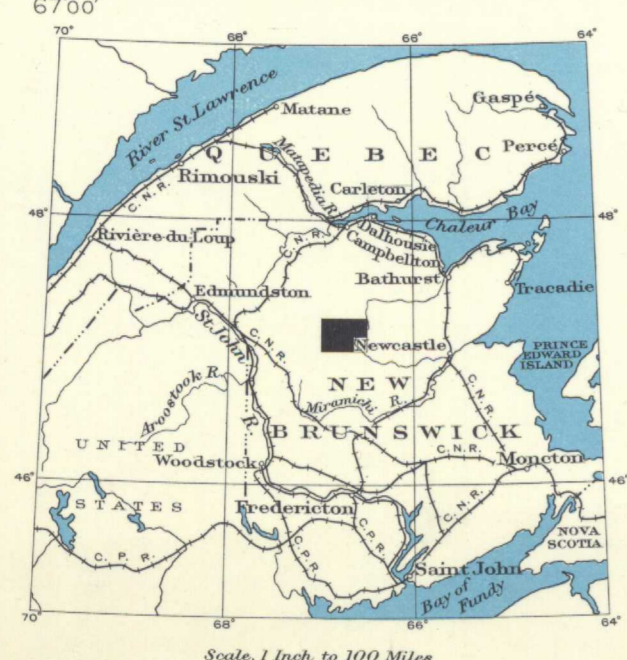
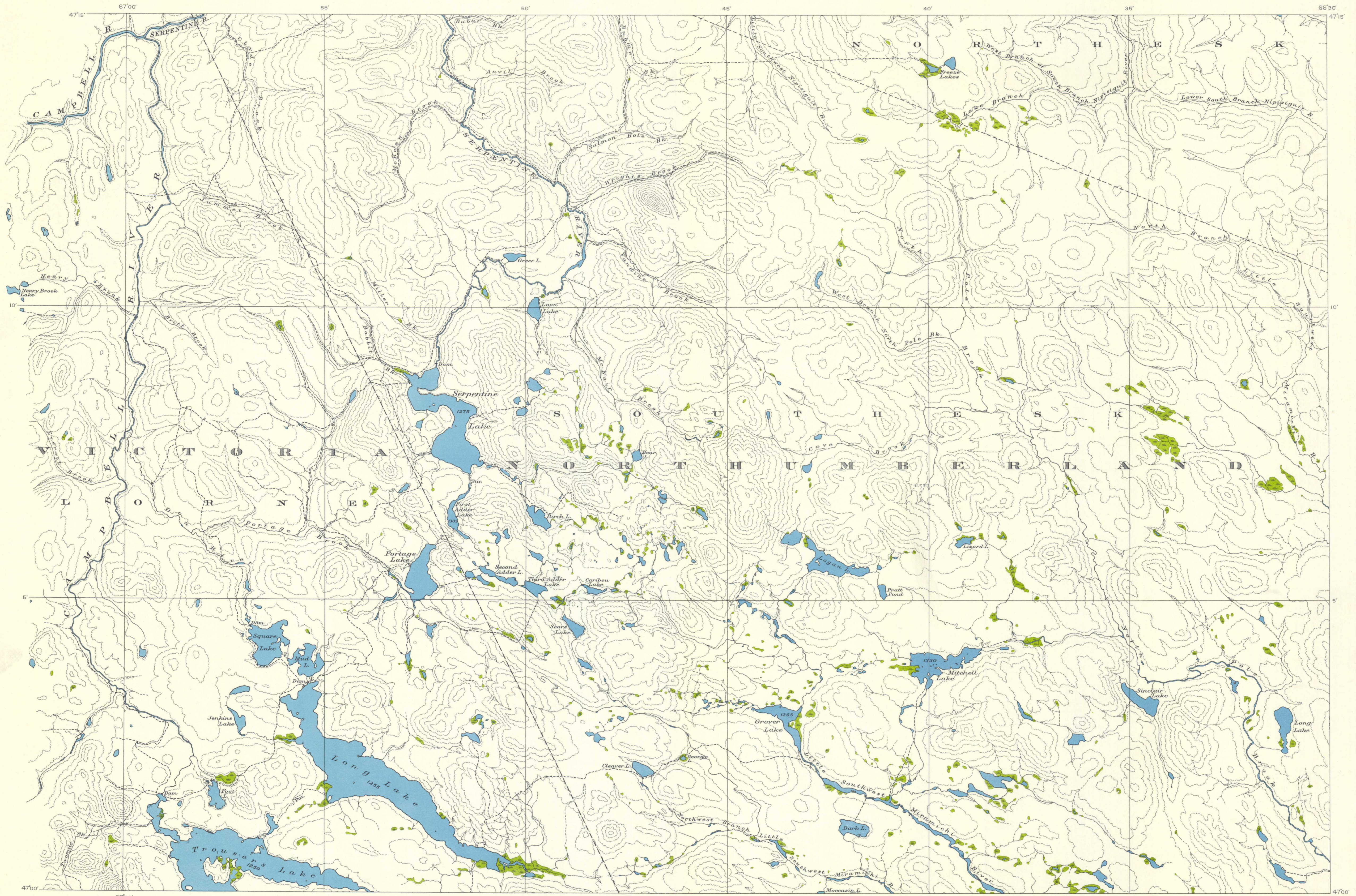


Issued 1936



Approximate magnetic declination

MAP 342 A  
**SERPENTINE LAKE SHEET**  
 VICTORIA AND NORTHUMBERLAND COUNTIES  
 NEW BRUNSWICK

Scale, 63376 or 1 Inch to 1 Mile  
 Miles  
 Kilometres

**Legend**

Bush road and trail	-----	Lake (position approximate)	~~~~~
Portage	-----	Intermittent stream	~~~~~
County boundary	-----	Marsh	~~~~~
Parish boundary	-----	Fall, or rapid	~~~~~
Building	•	Form lines	~~~~~
Abandoned camp site	•	Height in feet	1275

Surveys by the Topographical Division, Geological Survey, Department of Mines, 1932.

NOT TO BE TAKEN FROM LIBRARY  
 NE PAS SORTIR DE LA BIBLIOTHÈQUE

342A