

LEGEND

POST-SEINE

- 11 Quartz porphyry, granite, associated metamorphic rocks
- 10 Porphyryite
- 9 Lamprophyre, chlorite-carbonate rocks
- 8 Granite, syenite-gneiss, porphyry gneiss
- 7 Anorthosite and associated metamorphic rocks
- 6 Hornblende gabbro, metadiorite and related rocks

SEINE

- 5 Greenstone schists, altered sediments
- 4 Quartzite and slate
- 3 Conglomerate

KEEWATIN

- 2 Greenstone, greenstone schist, chlorite schist, hornblende schist, felsite, sericite schist, ellipsoidal andesite, tuff, banded iron formation, 2a, limestone

COUCHICHING

- 1 Mica schist, paragneiss, slate, greywacke and impure quartzite

Quartz veins, gold-bearing type

Concentrations of iron minerals, banded iron formation in Kewatin, elsewhere, titaniferous magnetite

Geological boundary (approximate, assumed)

Boundary of heavily drift-covered areas (heavily drift-covered areas are uncoloured)

Bedding (inclined, overturned, vertical)

Schistosity (inclined, vertical)

Glacial striae

Shaft

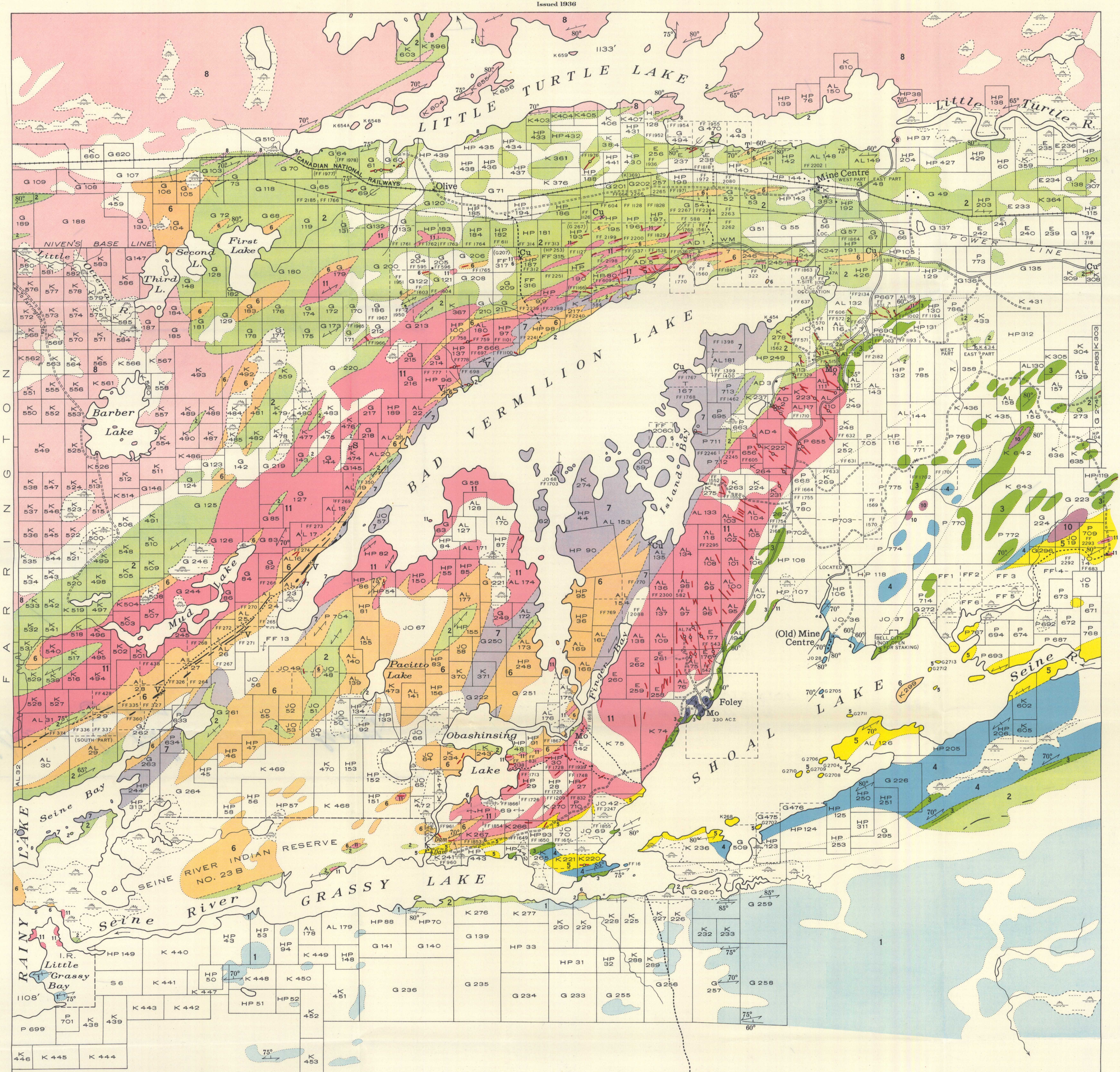
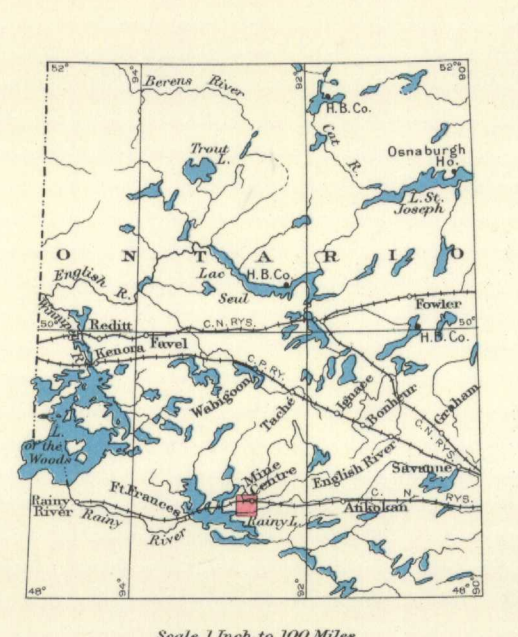
Tunnel

Road, winter road, trail

Copper.....xCu Molybdenite...xMo
 Pyrite.....xS Soapstone.....xT
 Vanadium.....xV

Geology by T.L. Tanton, 1934.
 Base-map from plan by the Ontario Department of Lands; drainage features modified from compilation of aerial photographs by the Topographical and Air Survey Bureau, Department of the Interior; additions by T.L. Tanton.

Approximate magnetic declination 43^o East.



MAP 334A
MINE CENTRE AREA
 RAINY RIVER DISTRICT
 ONTARIO
 Scale, 30,000 or 1 inch to 1/2 Mile
 0 1 2 Miles
 0 1 2 Kilometres

NOT TO BE TAKEN FROM LIBRARY
 NE PAS SORTIR DE LA BIBLIOTHÈQUE

334A