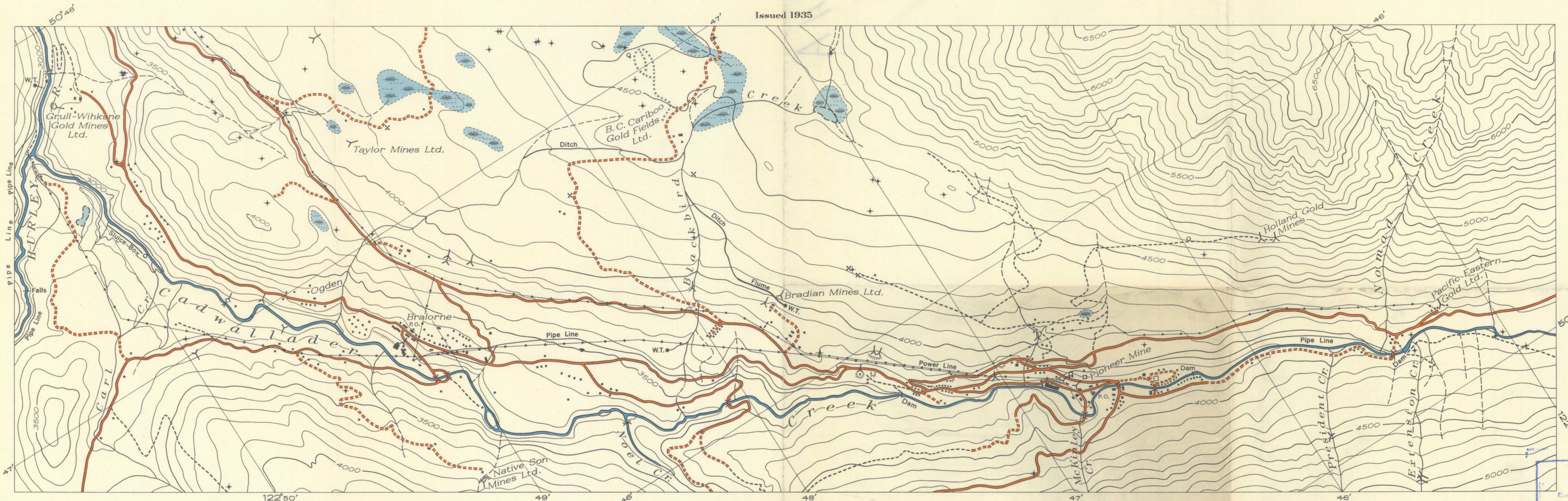


Canada  
Department of Mines

HON. W.A. GORDON, MINISTER; CHARLES CAMSELL, DEPUTY MINISTER.

BUREAU OF ECONOMIC GEOLOGY  
GEOLOGICAL SURVEY

Issued 1935



Approximate magnetic declination, 25°45' East.

MAP 324 A  
(PUBLICATION NO. 2386)

### CADWALLADER CREEK AREA

LILLOOET DISTRICT  
BRITISH COLUMBIA

SCALE, 1/12,000 or 1 INCH TO 1,000 FEET

Contour interval 100 feet.  
Datum, Mean sea-level.

NOT TO BE TAKEN FROM LIBRARY  
NE PAS SORTIR DE LA BIBLIOTHÈQUE

LEGEND

|                               |                                   |       |
|-------------------------------|-----------------------------------|-------|
| Road and buildings.....       | Prospect .....                    | X     |
| Road not well travelled ..... | Shaft .....                       | □     |
| Trail .....                   | Claim post .....                  | +     |
| Bridge .....                  | Water tank .....                  | W.T.● |
| Power line .....              | Trench .....                      | xxxxx |
| School .....                  | Mine dump .....                   |       |
| Post office .....             | Intermittent stream and lake..... | ~~~~~ |
| Mine tunnel .....             | Marsh .....                       |       |

RECEIVED  
GSC LIBRARY

324 A

324 A