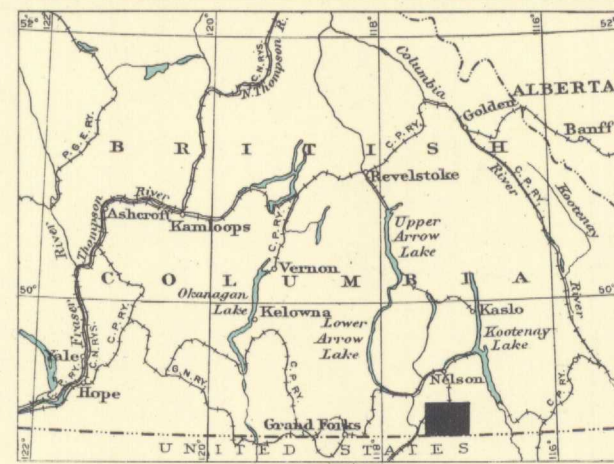
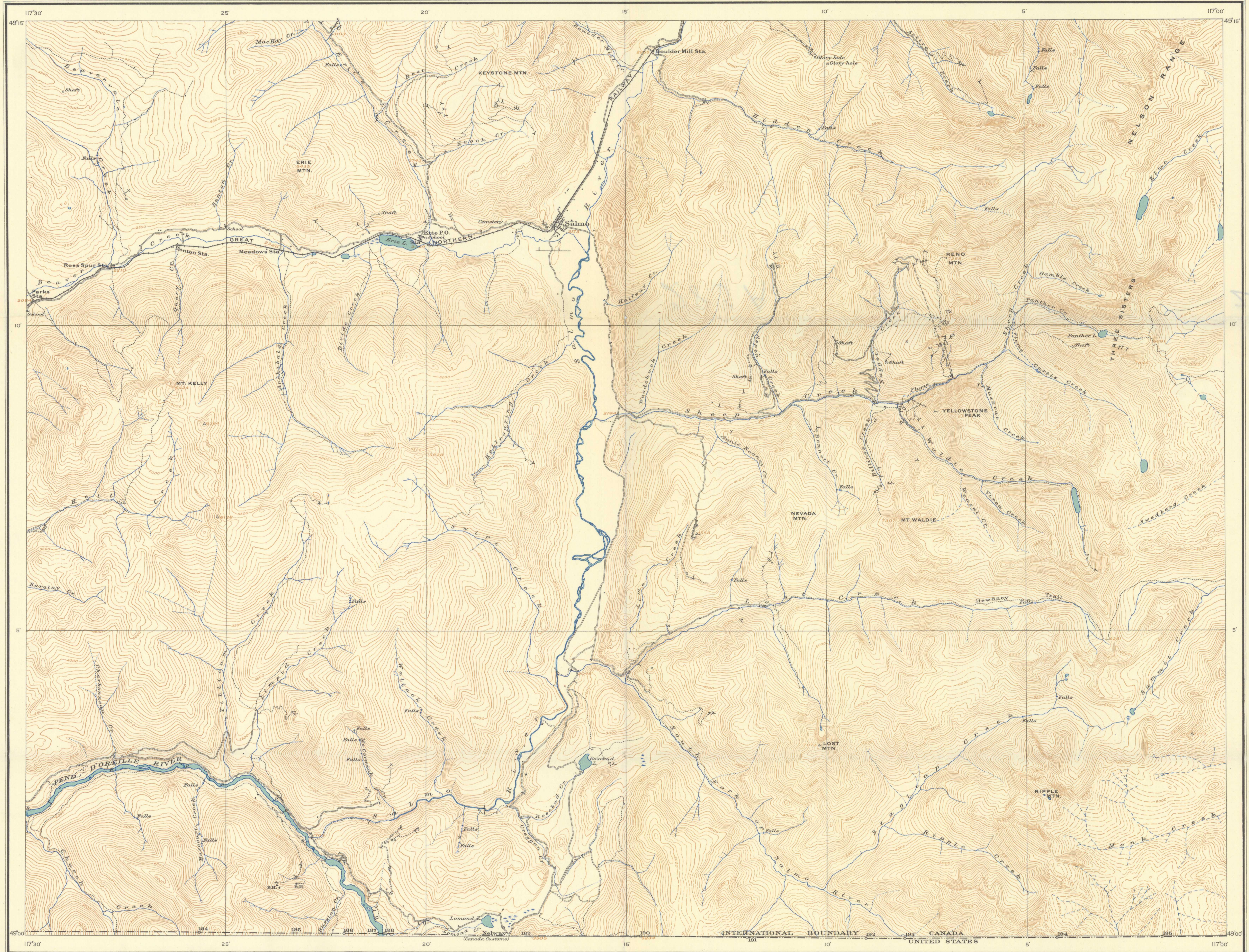


Canada
Department of Mines

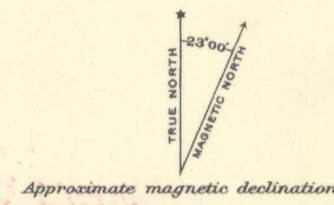
HON. W. A. GORDON, MINISTER; CHARLES CAMSELL, DEPUTY MINISTER.

GEOLOGICAL SURVEY
W. H. COLLINS, DIRECTOR.

Issued 1934



Scale, 1 Inch to 100 Miles



MAP 283 A
SALMO SHEET
KOOTENAY DISTRICT
BRITISH COLUMBIA



Scale, 63,360 or 1 Inch to 1 Mile
Miles
Kilometres
Contour interval 100 Feet
Elevations referred to Mean sea level

NOT TO BE TAKEN FROM LIBRARY
NE PAS SORTIR DE LA BIBLIOTHÈQUE

Legend

Road and buildings	International boundary monument
Road not well travelled	Triangulation station
Bush road or trail	Intermittent stream
Railway	Lake and stream (position approximate)
Mine tramway	Marsh
Aerial tramway	Rapids
Mine tunnel	Contours
Prospect	Contours (position approximate)
Bore hole	Depression contour
Tourist camping ground	Height in feet
International boundary	

Surveys by S.M. Steeves, 1929, 1929, 1930.

Publication No 2303
Price, 25 cents.



283 A