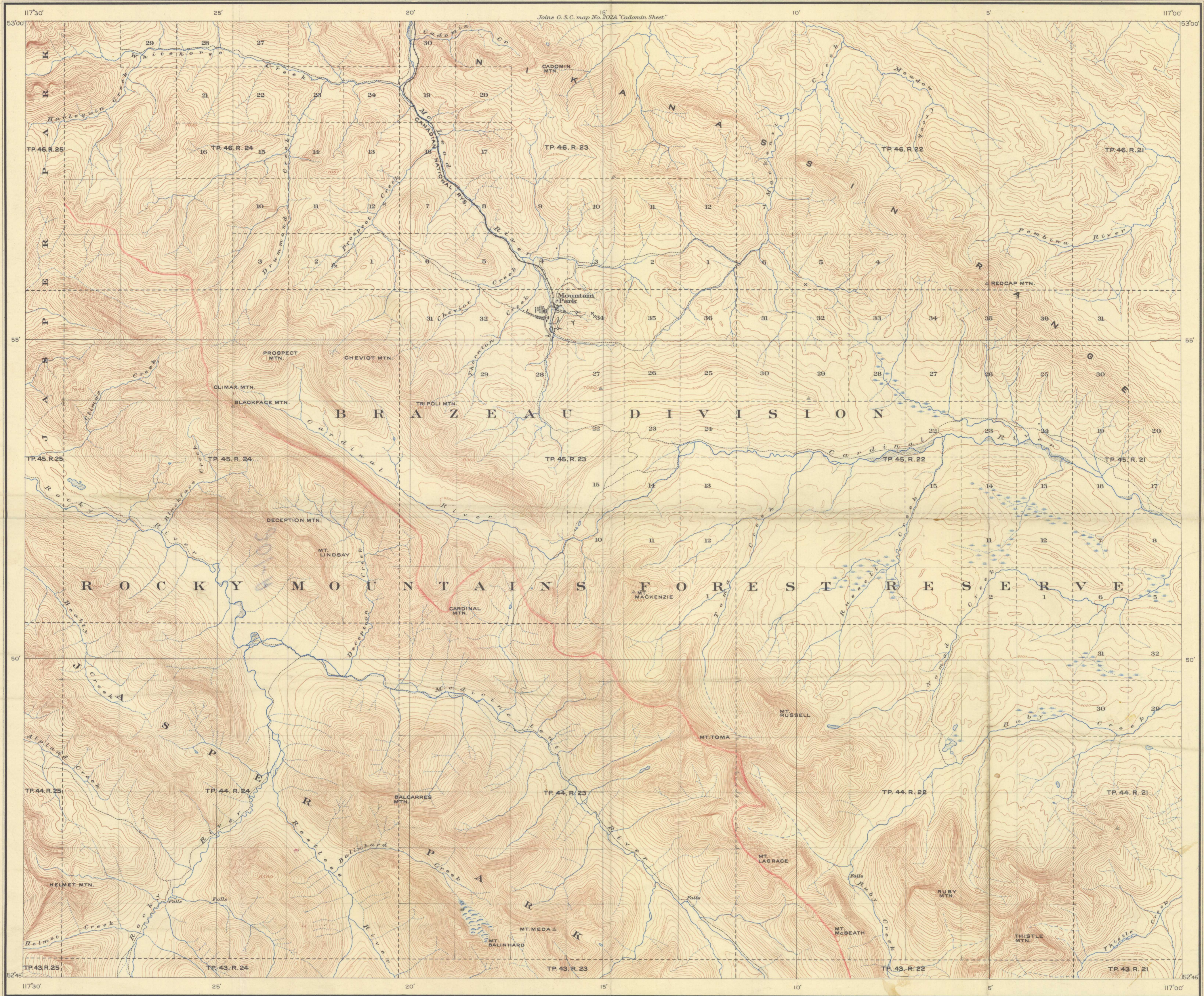
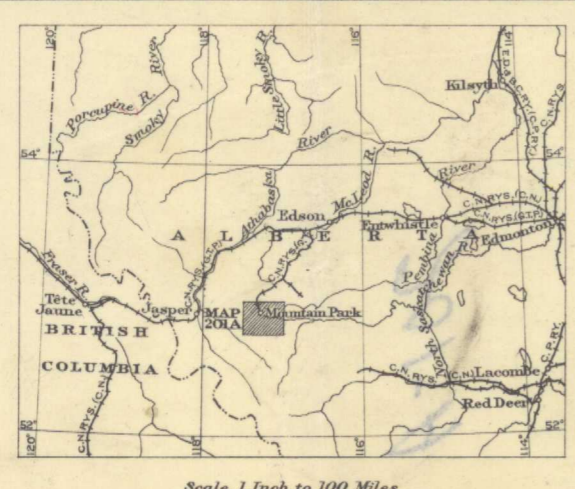
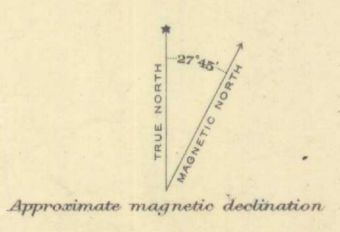


Issued 1929

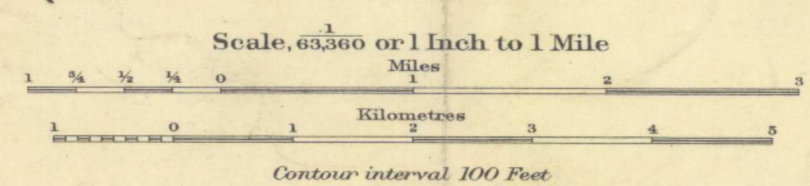


- LEGEND**
- Roads and buildings
 - Trail
 - Railway
 - Mine tramway
 - Cemetery
 - Mine tunnel
 - Prospect
 - Triangulation station
 - Township boundary
 - Section line
 - Intermittent stream
 - Glacier
 - Marsh
 - Contours
 - Contours (position approximate)
 - Height in feet
 - Sand or gravel bar

Elevations, referred to Mean sea-level, based on precise levelling by the Geodetic Survey of Canada. Geographical position subject to slight revision.



MAP 201A
MOUNTAIN PARK SHEET
 (WEST OF FIFTH MERIDIAN)
 ALBERTA



TOPOGRAPHY
 W. H. Boyd, Chief Topographical Engineer.
 Surveys and topography by W. H. Miller, 1922, 1924,
 assisted by J. W. Spence, 1924.
 Triangulation control by R. C. McDonald, 1922.

Publication No. 2145
 Price, 25 cents.

NOT TO BE TAKEN FROM LIBRARY
 NE PAS SORTIR DE LA BIBLIOTHEQUE

G
 3401
 .C5
 1910-
 G4
 26 map
 A-14-64
 201A