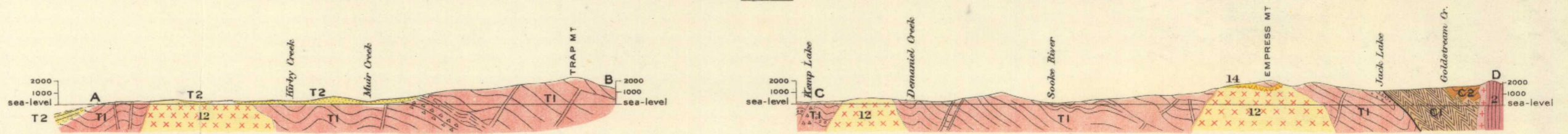


Canada
Department of Mines

HON. MARTIN BURRELL, MINISTER; R. G. McCONNELL, DEPUTY MINISTER.

GEOLOGICAL SURVEY
WILLIAM McINNIS, DIRECTING GEOLOGIST.



Structural section along line A. B.
Scale, horizontal and vertical, 1:25,000

Structural section along line C. D.
Scale, horizontal and vertical, 1:25,000

QUATERNARY
TERTIARY
MESOZOIC
PALEOZOIC

LEGEND

Q
Superficial deposits
(completely masking bed rock)

T2
Sooke formation
(sandstone and conglomerate)

14
Granite

13
Anorthosite

12
Olivine and Augite Gabbro

T1
Metchosin Volcanics
(basalt, diabase, tuff and chert)

T1
Metchosin Volcanics
(agglomerate)

10
Quartz Diorite Porphyrite
(dykes)

9
Gabbro
(dykes)

4
Colquitz Granite Gneiss
(boulders)

2
Colquitz Quartz Diorite Gneiss

1
Wauk Gabbro-diorite Gneiss

J-12
Complex of Wauk and
Colquitz Gneisses

J-12
Sutton formation
(crystalline limestone)

C2
Molinit Volcanics
(andesite, dacite, tuff breccia,
tuffaceous argillite and chert)

C1
Leach River formation
(slaty and quartzose schist)

Symbols

Geological boundary
(position determined)

Geological boundary
(probable error of location
less than 250 feet)

Geological boundary
(probable error of location
less than 1000 feet)

Geological boundary
(position assumed)

Fault
(probable error of location
less than 250 feet)

Fault
(probable error of location
less than 1000 feet)

Probable fault
(position assumed)

Dip of fault

Downthrow side of fault

Uphrow side of fault

Dip and strike

General dip and strike

Vertical strata

Horizontal strata

Anticline and anticlinal axis

Syncline and synclinal axis

Foliation, dip and strike

Foliation, dip unknown
or nearly vertical

Fossil locality

Glacial striae

SOOKE INTRUSIVES

VANCOUVER GROUP

LEGEND

Culture

Roads and buildings

Private roads, or roads
not well defined

Trails

Railways

Teamways

Bridges

Churches

Schools

Post offices

Prospects

Wharves

Lighthouses

International boundary

District boundaries
(lines shown, approximately)

Triangulation stations

Benchmarks

Water

Rivers and lakes

Watercourses with intermittent flow

Fresh marshes

Tidal flats

Relief

Contours
(showing land forms and
elevations above sea level)
Interval 100 feet

Sand

Figures showing heights in feet
above sea level

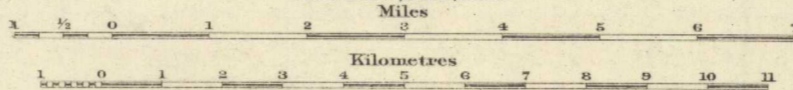
Geographical position by triangulation
based on U.S.C. & G.S. stations "Discovery"
and "Discovery", near Victoria.
Average magnetic declination 25' East.

C.D. Simons, Geographer and Chief Draughtsman.
G.G. Allen, and A.M. Geogon, Draughtsmen.

MAP 44A
(Issued 1918)

SOOKE SHEET
VANCOUVER ISLAND
BRITISH COLUMBIA

Scale, 1:125,000



Note. For practical purposes assume
2 MILES TO 1 INCH

GEOLOGY

C.H. CLAPP.

1912, 1913

TOPOGRAPHY

R.H. CHAPMAN, (IN CHARGE)

1910

K.G. CHIPMAN.

1910

S.C. McLEAN, (TRIANGULATION)

1909



To accompany Memoir by C.H. Clapp.

NOT TO BE TAKEN FROM LIBRARY
NE PAS SORTIR DE LA BIBLIOTHÈQUE