

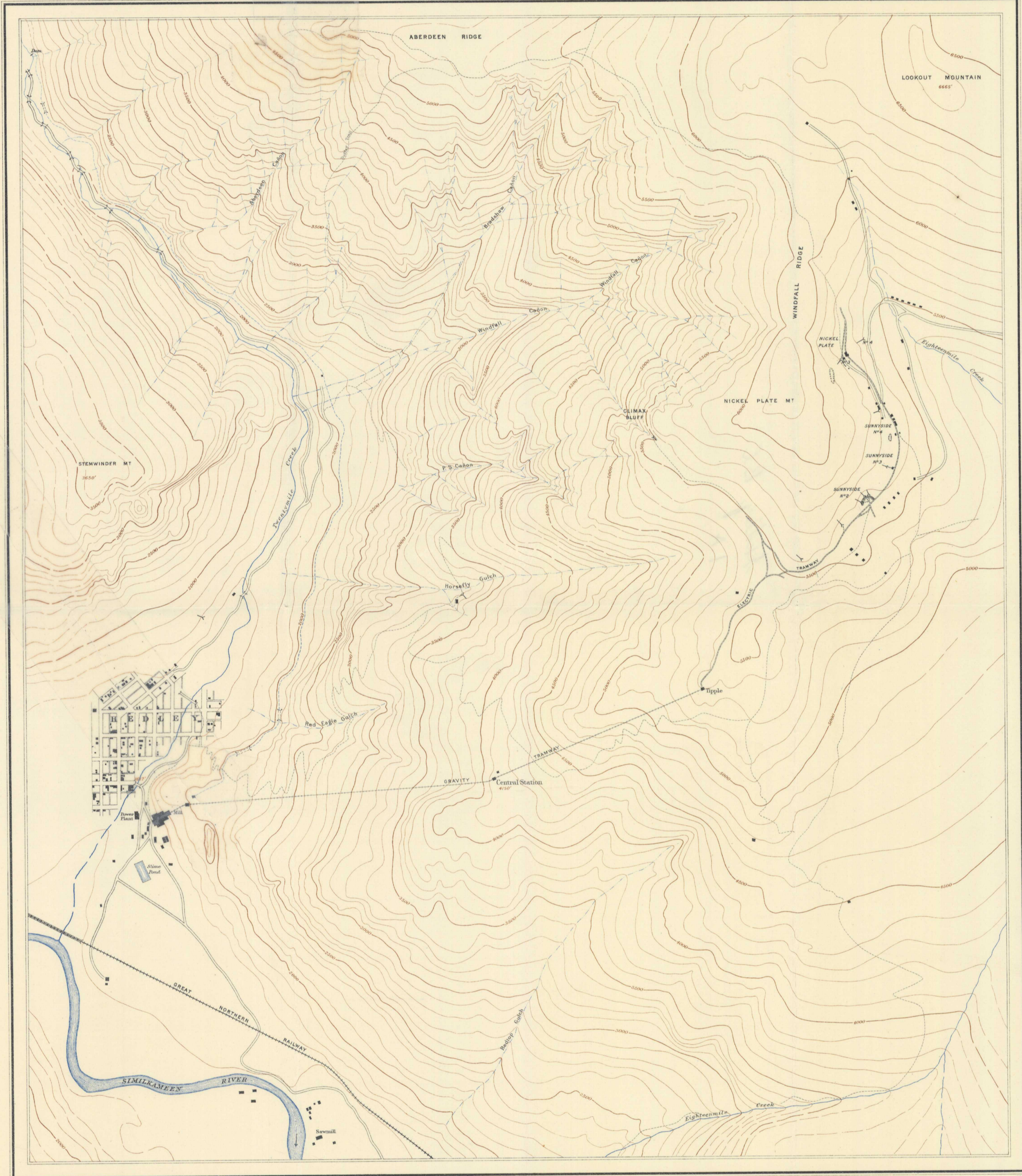
Canada
Department of Mines
GEOLOGICAL SURVEY

HON. W. TEMPLEMAN, MINISTER; A. P. LOW, DEPUTY MINISTER;
R. W. BROCK, DIRECTOR.

TOPOGRAPHY

1910

BRITISH COLUMBIA



LEGEND

Culture

Roads and buildings

Trails

Railways

Tramways

Electric tramways

Bridges

Tunnels

Mine tunnels

Dams

Mine excavations

Water

Rivers and streams

Intermittent streams

Flumes

Relief

Contours (showing lead lines and elevations above sea level) Interval, 100 feet

Contours (not well determined)

Heights in feet above sea level

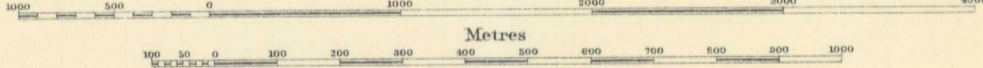
Magnetic declination about 25° East.

C. O. Senecal, Geographer and Chief Draughtsman.
O. E. Pruthomme and A. Dickson, Draughtsmen.

MAP 1A

HEDLEY MINING DISTRICT
BRITISH COLUMBIA

Scale: 1/12000
Feet



1000 FEET TO 1 INCH

TOPOGRAPHY
(subject to revision)

C. GANSELL, IN CHARGE, 1907-1908.
L. REINECKE, 1908.

NOT TO BE TAKEN FROM LIBRARY
NE PAS SORTIR DE LA BIBLIOTHÈQUE

To accompany Memoir 372

G 3401
.C5
1910-
G4
ob map



1A