

Green  
Yellow  
Blue  
Brown  
Orange  
Red  
Purple

PRELIMINARY SERIES

GEOLOGICAL SURVEY OF CANADA  
DEPARTMENT OF MINES AND TECHNICAL SURVEYS

PARTS OF 42, 43, 52, 53

- LEGEND**
- < 61,000 gammas
  - 61,000 - 61,300 - 61,600 - 62,000 gammas
  - 62,000 - 63,000 gammas
  - > 63,000 gammas
- PRECAMBRIAN**
- 9 Gabbro dykes
  - 8 Granite, syenite quartz-monzonite
  - 7 Porphyritic granite
  - 6 Granitized volcanic and sedimentary rocks
  - 5 Diorite, gabbro, anorthositic gabbro
  - 4 Ultramafic rocks
  - 3 Iron-formation
  - 2 Metasedimentary rocks
  - 1 Mainly andesite and basalt, diorite derived from volcanic rocks and some metasedimentary rocks

Note: Formations are not necessarily in stratigraphic sequence

Contact based on aeromagnetic data . . . . .

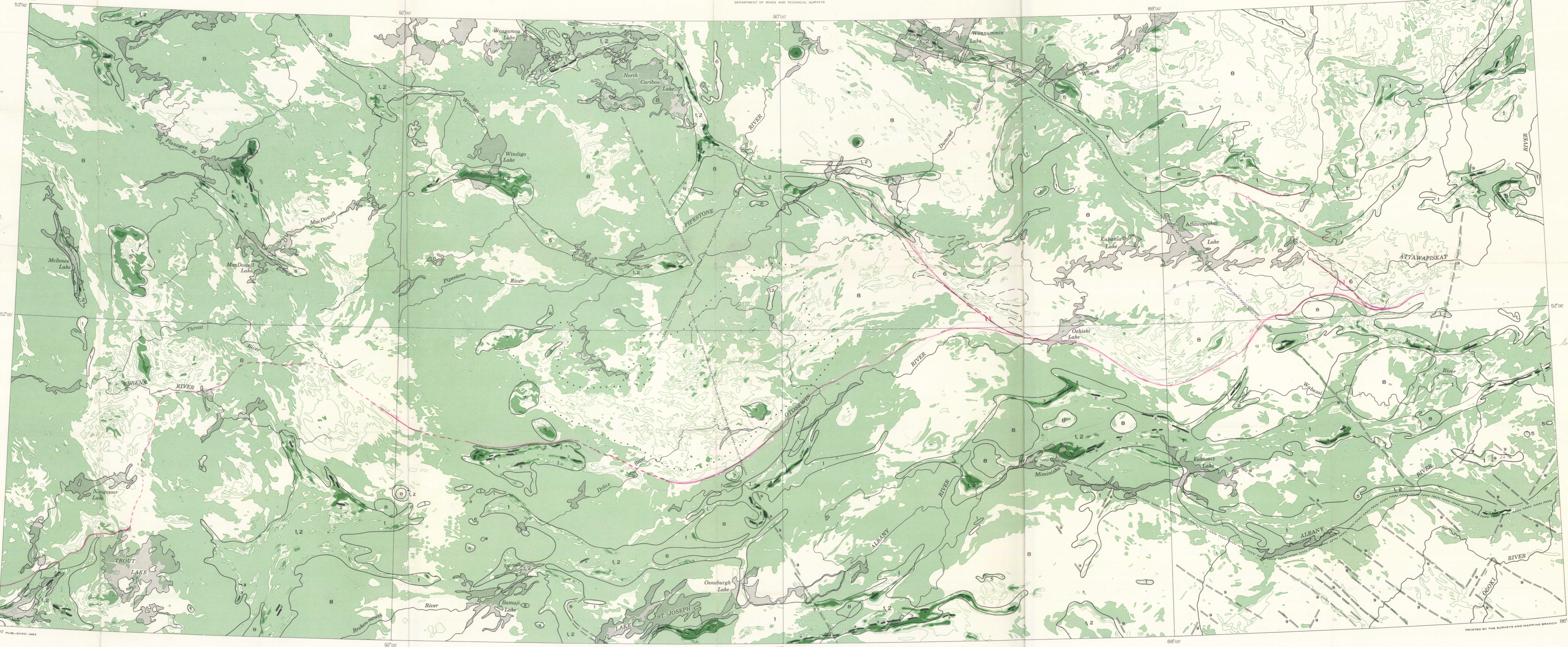
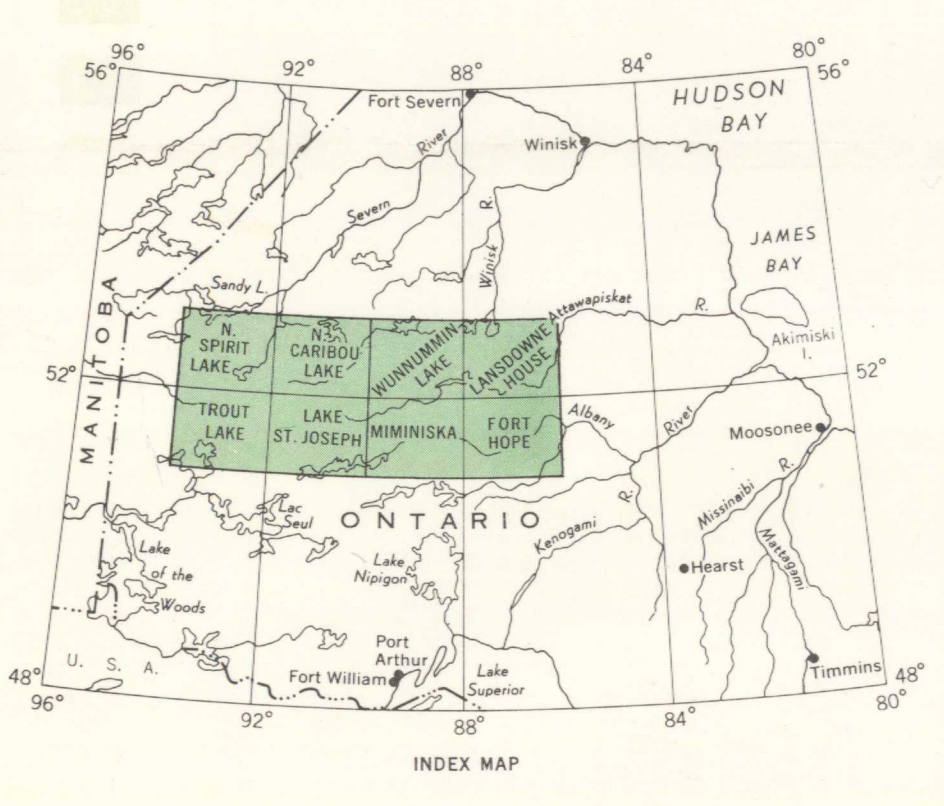
Area containing a large proportion of ferromagnetic porphyritic granite . . . . .

Area of granitized volcanic and sedimentary rocks . . . . .

Assumed fault from magnetic data . . . . .

Aeromagnetic Interpretation by A. S. MacLaren, 1962

Cartography by the Geological Survey of Canada, 1963



MAP LIBRARY | CARTOTHEQUE

MAP 3-1963  
TO ACCOMPANY PAPER 63-5  
AEROMAGNETIC-GEOLOGICAL INTERPRETATION  
RED LAKE-LANSDOWNE HOUSE AREA  
ONTARIO

Scale: One Inch to Eight Miles =  $\frac{1}{966,880}$   
Miles

42, 43, 52, 53  
G  
3401  
C5  
1956  
G4  
omvfc

MAP 3-1963  
RED LAKE-LANSDOWNE HOUSE AREA  
ONTARIO  
PARTS OF 42, 43, 52, 53

3-1963  
C2