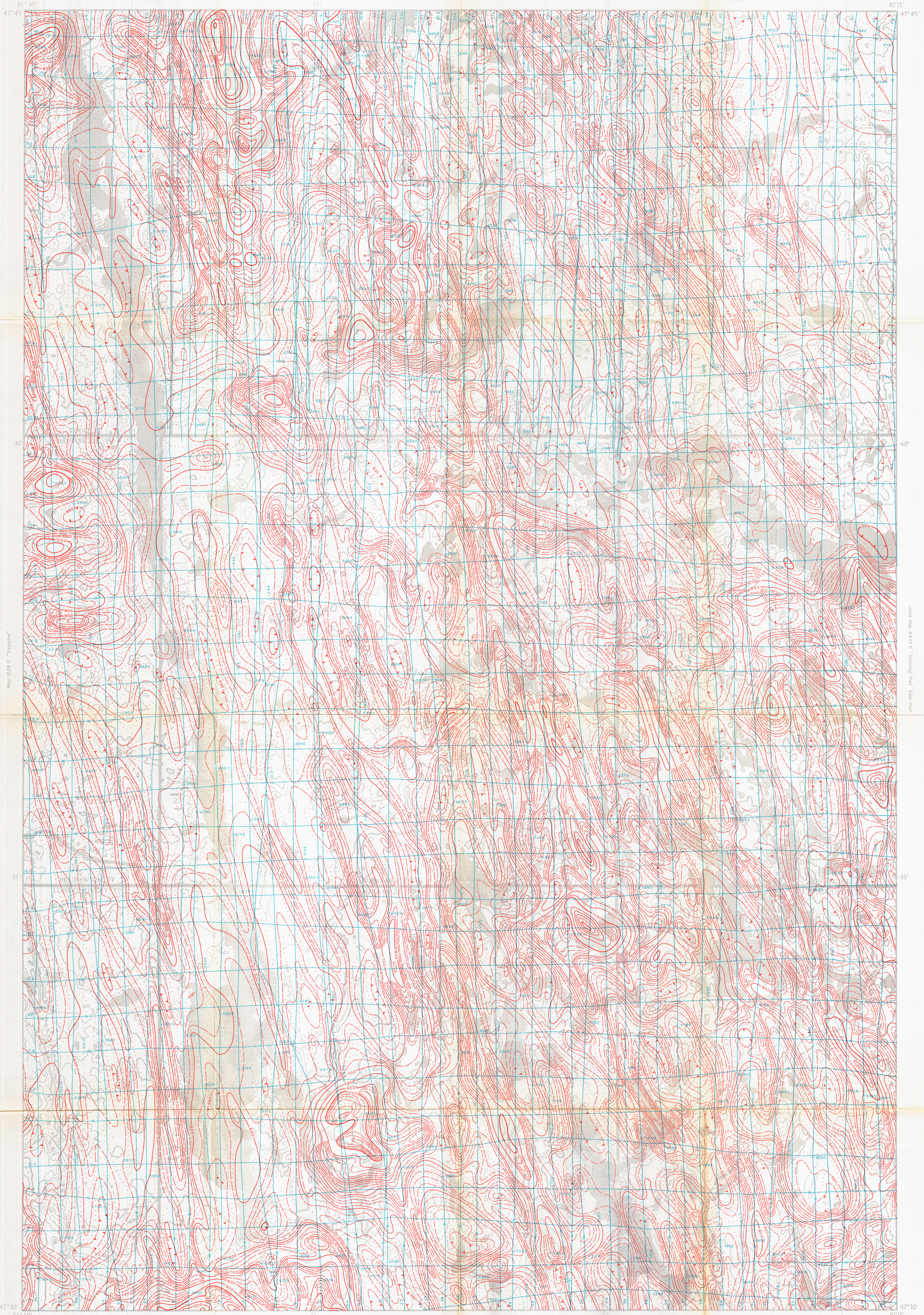


Join Map B451 G "Shinour Lake" West Half

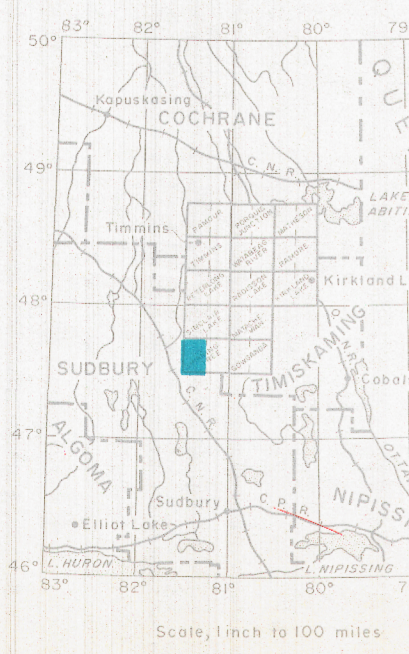


Map B268 G "Eggenau"

Join Map B445 G "Shinning Tree" East Half

Map B216 G "Gokimiko Lake"

INDEX MAP



ISOMAGNETIC LINES

- 500 gamma
- 100 gamma
- 200 gamma
- 10 gamma
- Magnetic depression
- Flight lines
- Flight altitude 500 feet above ground level

MAP B450 G SHINNING TREE SUBBURY DISTRICT ONTARIO

Scale One Inch to One Half Mile 1:31,680

The Department of Energy, Mines and Resources is indebted to the NEW AIRBORNE SURVEY CORPORATION CO. LTD. for permission to publish these data which were produced by the DOMINION GULF CO. TORONTO. Core information recorded during the course of their surveys in 1952, 1955, and 1958. No correction has been made for regional variation. The topography of this area was reproduced from 100,000 topographic map sheets, published by the Department of Energy, Mines and Resources, Ottawa. Drafting and Reproduction by International Mapping Services Limited Toronto.

The magnetic data on this map were compiled from information recorded along the flight lines shown. The anomalies expressed by the magnetic contours are dependent on the variable magnetic intensities of the underlying rocks and may be due to conditions near, or at unknown depths below the surface. High magnetic anomalies normally indicate the presence of basic rocks, such as diabase, gabbro, or serpentine, which have a relatively high iron content, but in specific instances may be due, or partly due, to concentrations of magnetic minerals. By means of the magnetic anomalies, various rock bodies or structural features, such as faults or folds, may be traced into, or across, areas of low or no outcrops. In many instances, however, no interpretation of particular anomalies may be possible without further geological information.

GEOPHYSICS PAPER 8450 SHINNING TREE ONTARIO SHEET 411 WEST HALF

Published, 1970