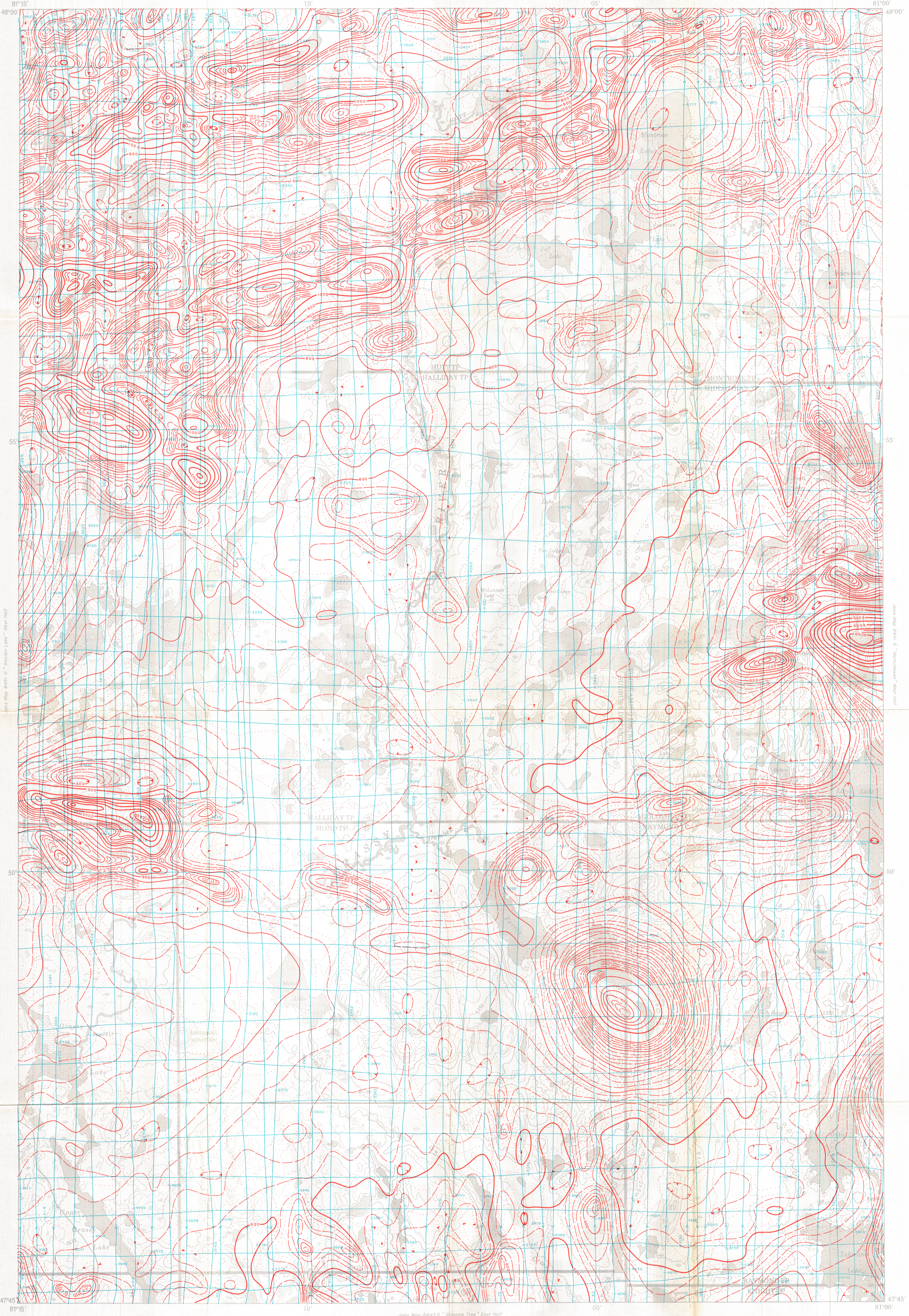


Joins Map 8447 G, "Pteridong Lake" East Half

Joins Map 8445 G, "Shinning Tree" East Half



Joins Map 8451 G, "Sinclair Lake" West Half

Joins Map 8449 G, "Pteridong Lake" West Half

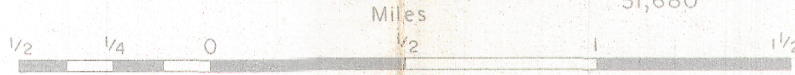
Published, 1970

MAP 8448 G

SINCLAIR LAKE

TIMISKAMING & SUDBURY DISTRICTS
ONTARIO

Scale: One Inch to One Half Mile = 1/31,680 Miles



The Department of Energy, Mines and Resources is indebted to the NEW JERSEY ZINC EXPLORATION CO. LTD. for permission to publish these data which were produced by the DOMINION GUYOT CO. TORONTO, from information recorded during the course of their surveys in 1947, 1948, and 1949.

No correction has been made for regional variation.

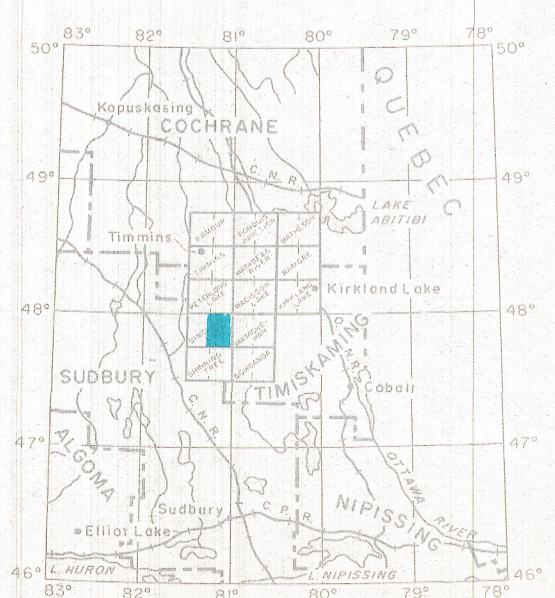
The topography for this map was reproduced from 1:50,000 topographic map sheets published by the Department of Energy, Mines and Resources, Ottawa.

Drafting and Reproduction by International Mapping Services Limited, Toronto.

The magnetic data on this map were compiled from information recorded along the flight lines shown. The anomalies expressed by the magnetic contours are dependent on the variable magnetic intensities of the underlying rocks, and may be due to conditions near, or at unknown depths below the surface. High magnetic anomalies normally indicate the presence of basic rocks, such as diabase, gabbro, or serpentine, which have a relatively high iron content, but in several instances may be due, or partly due, to concentrations of magnetic minerals. By means of the magnetic anomalies, various rock bodies or structural features, such as faults or folds, may be traced into, or across, areas of low or no outcrops. In many instances, however, no interpretation of particular anomalies may be possible without further geological information.

GEOPHYSICS PAPER 8448
SINCLAIR LAKE
ONTARIO
SHEET 41 EAST HALF

INDEX MAP



- ISOMAGNETIC LINES (total field)
- 500 gammas
 - 100 gammas
 - 50 gammas
 - 10 gammas
 - Magnetic depression
 - Flight lines
 - Flight altitude: 500 feet above ground level