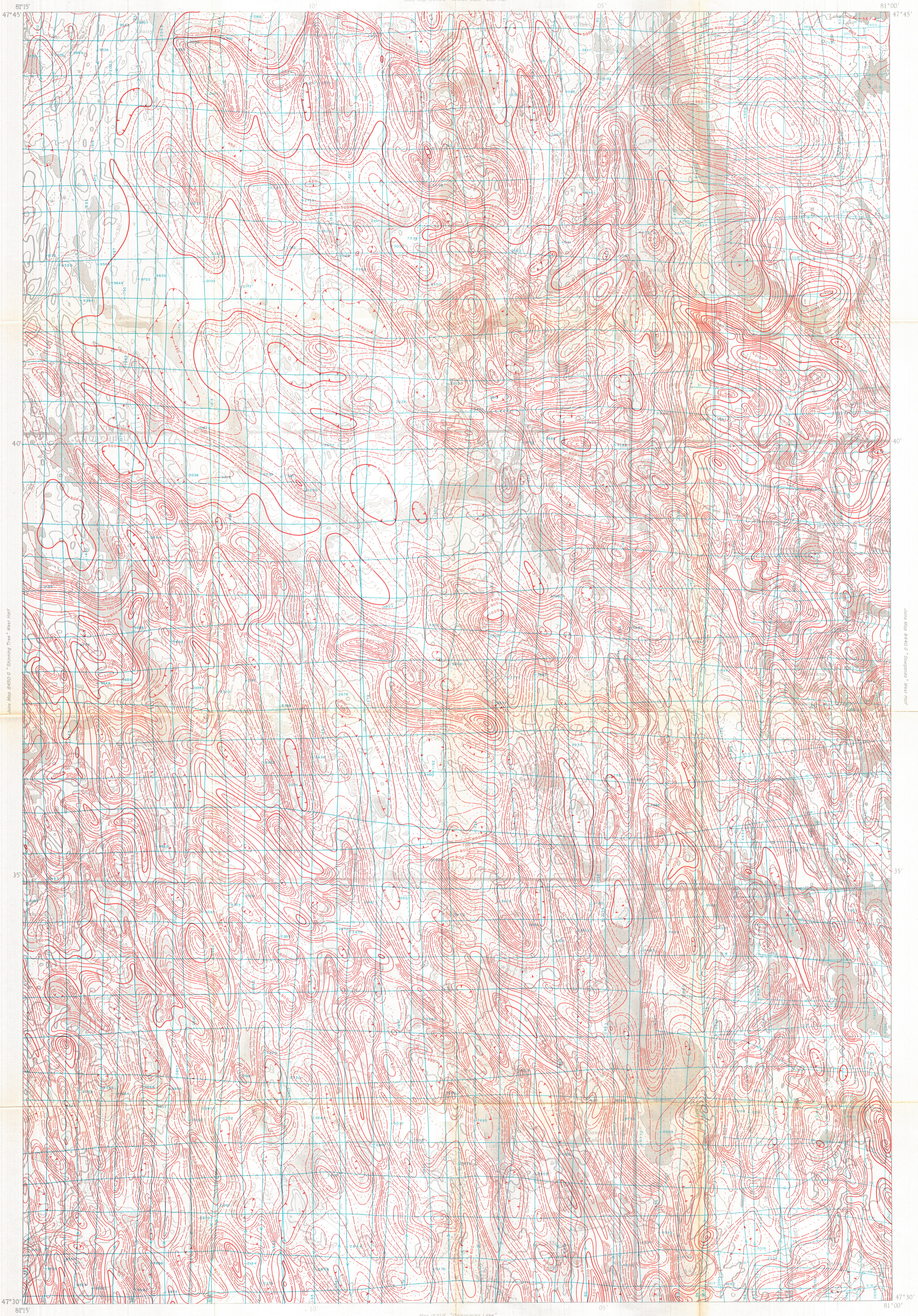


Join Map 8446 G "Sincclair Lake" East Half



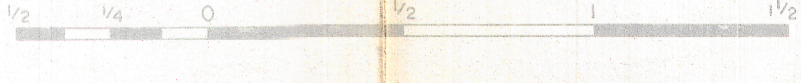
Map 1521 G "Opiskimika Lake"

MAP 8445 G

# SHINNING TREE

SUDBURY & TIMISKAMING DISTRICTS  
ONTARIO

Scale: One inch to One Half Mile = 1/2 Miles = 3,680 Feet



- ISOMAGNETIC LINES** (total field)
- 500 gamma
  - 100 gamma
  - 20 gamma
  - 10 gamma
  - Magnetic depression
  - Flight lines
  - Flight altitude 500 feet above ground level

The Department of Energy, Mines and Resources is indebted to the NEW JERSEY ZINC CORPORATION CO. LTD. for permission to publish these data which were produced by the DOMINION GULF CO., TORONTO. Some information recorded during the course of their survey in 1947, 1948, and 1949.

No correction has been made for regional variation.

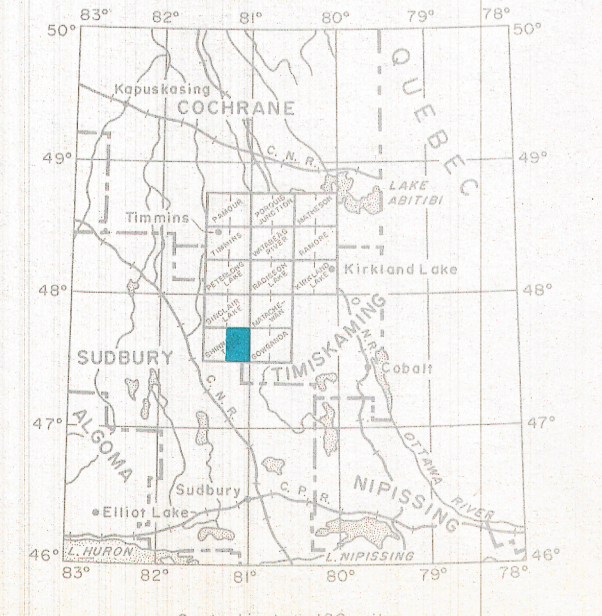
The topography for this map was reproduced from 1:50,000 topographical map sheets, published by the Department of Energy, Mines and Resources, Ottawa.

Drafting and Reproduction by International Mapping Services Limited, Toronto.

The magnetic data on this map were compiled from information recorded along the flight lines shown. The anomalies expressed by the magnetic contours are dependent on the variable magnetic intensities of the underlying rocks, and may be due to conditions near, or at unknown depths below the surface. High magnetic anomalies normally indicate the presence of basic rocks, such as diabase, gabbro, or serpentinite, which have a relatively high iron content, but in special instances may be due, or partly due, to concentrations of magnetic minerals. By means of the magnetic anomalies, various rock bodies or structural features, such as faults or folds, may be traced into, or across, areas of low or no outcrop. In many instances, however, no interpretation of particular anomalies may be possible without further geological information.

GEOPHYSICS PAPER 8445  
**SHINNING TREE**  
ONTARIO  
SHEET 411 EAST HALF

INDEX MAP



Published, 1970