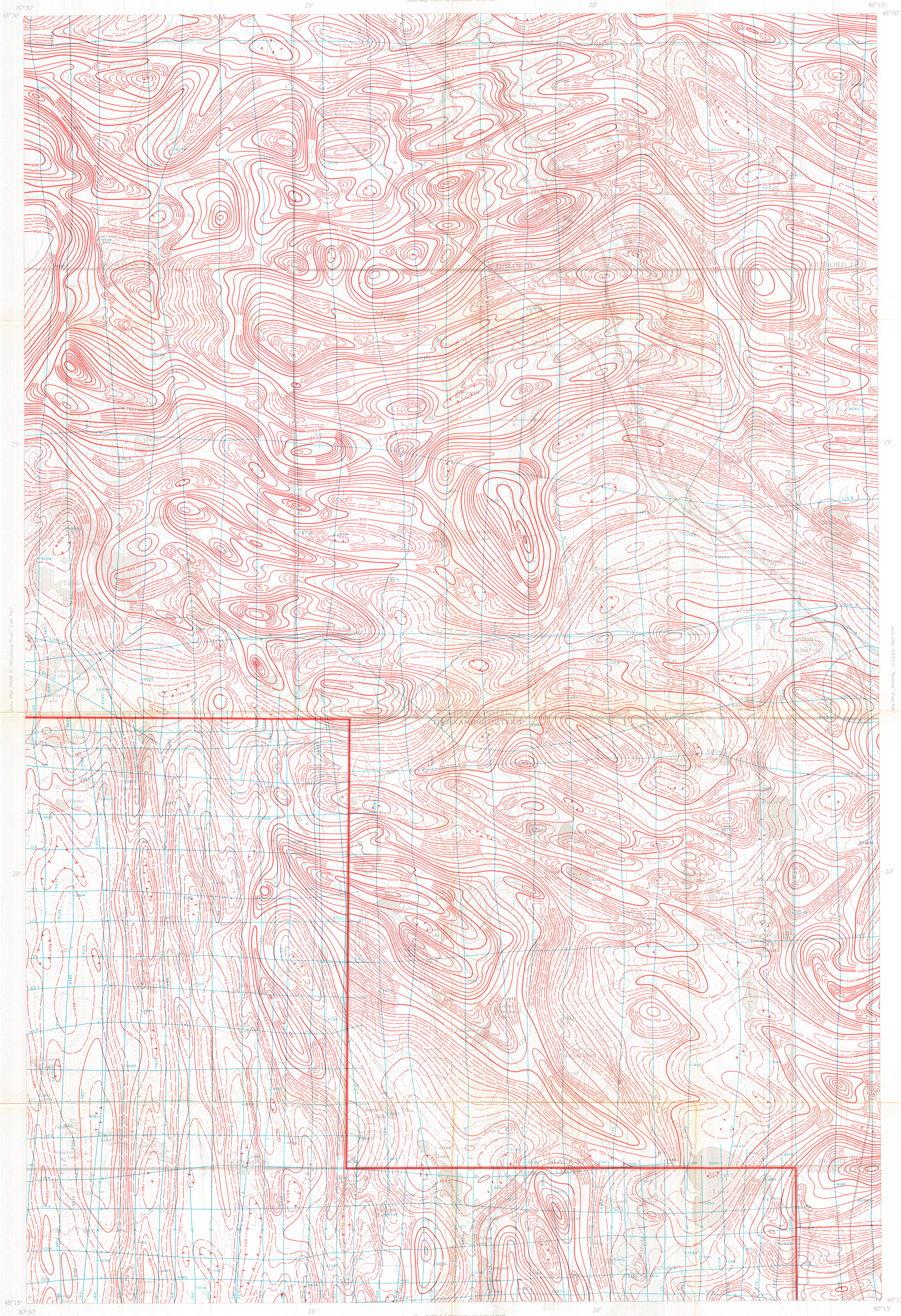


Jans Map 0434 G, "Matheson" West Half



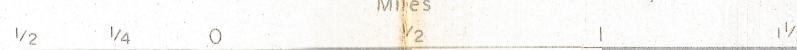
Jans Map 0432 G, "Kirkland Lake" West Half

MAP 6433 G

RAMORE

COCHRANE & TIMISKAMING DISTRICTS
ONTARIO

Scale: One Inch to One Half Mile = 1/31,680 Miles



The Department of Energy, Mines and Resources is indebted to the NEW JERSEY ZINC EXPLORATION CO. LTD. for permission to publish these data which were produced by the DOMINION GULF CO., TORONTO, from information recorded during the course of their surveys in 1947, 1948, and 1949.

No correction has been made for regional variation.

The topography for this map was rederived from 1:50,000 topographical map sheets, published by the Department of Energy, Mines and Resources, Ottawa.

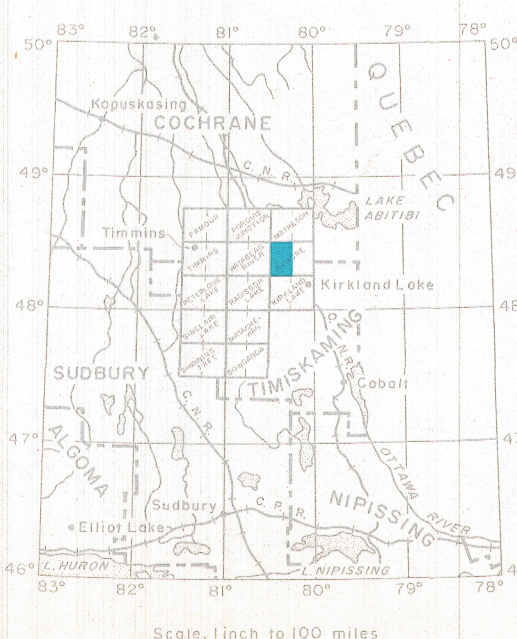
Drafting and Reproduction by International Mapping Services Limited, Toronto.

The magnetic data on this map were compiled from information recorded along the flight lines shown. The anomalies expressed by the magnetic contours are dependent on the variable magnetic intensities of the underlying rocks, and may be due to conditions near, or at unknown depths below the surface. High magnetic anomalies normally indicate the presence of basic rocks, such as diorite, gabbro, or serpentine, which have a relatively high iron content, but in special instances may be due, or partly due, to concentrations of magnetic minerals. By means of the magnetic anomalies, various rock bodies or structural features, such as faults or folds, may be traced into, or across, areas of low or no outcrops. In many instances, however, no interpretation of particular anomalies may be possible without further geological information.

Published, 1970

GEOPHYSICS PAPER 6433
RAMORE
ONTARIO
SHEET 42 WEST HALF

INDEX MAP



ISOMAGNETIC LINES (total field)

- 500 gammas
- 100 gammas
- 20 gammas
- 10 gammas
- Magnetic depression
- Flight lines
- Flight altitude 500 feet above ground level

Scale, 1 inch to 150 miles