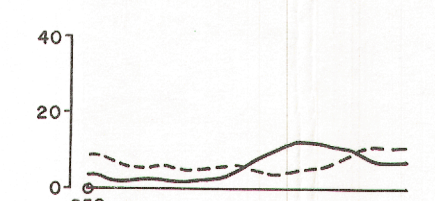




TOTEM VLF EM TOTAL FIELD PROFILES
 PROFILS DU CHAMP TOTAL TOTEM EM VLF



Solid line is orthogonal station
 Scale is 1 cm. = 20%
 Le trait continu représente la station orthogonale
 L'échelle est de 1 cm. = 20%

Dashed line is line station
 Scale is 1 cm. = 20%
 Le trait discontinu représente la station en ligne
 L'échelle est de 1 cm. = 20%