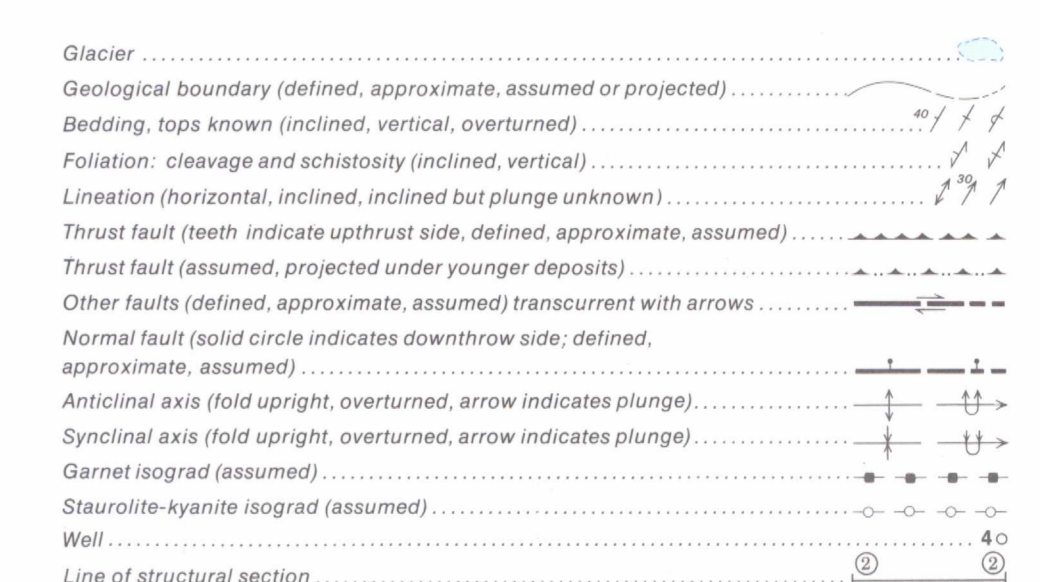
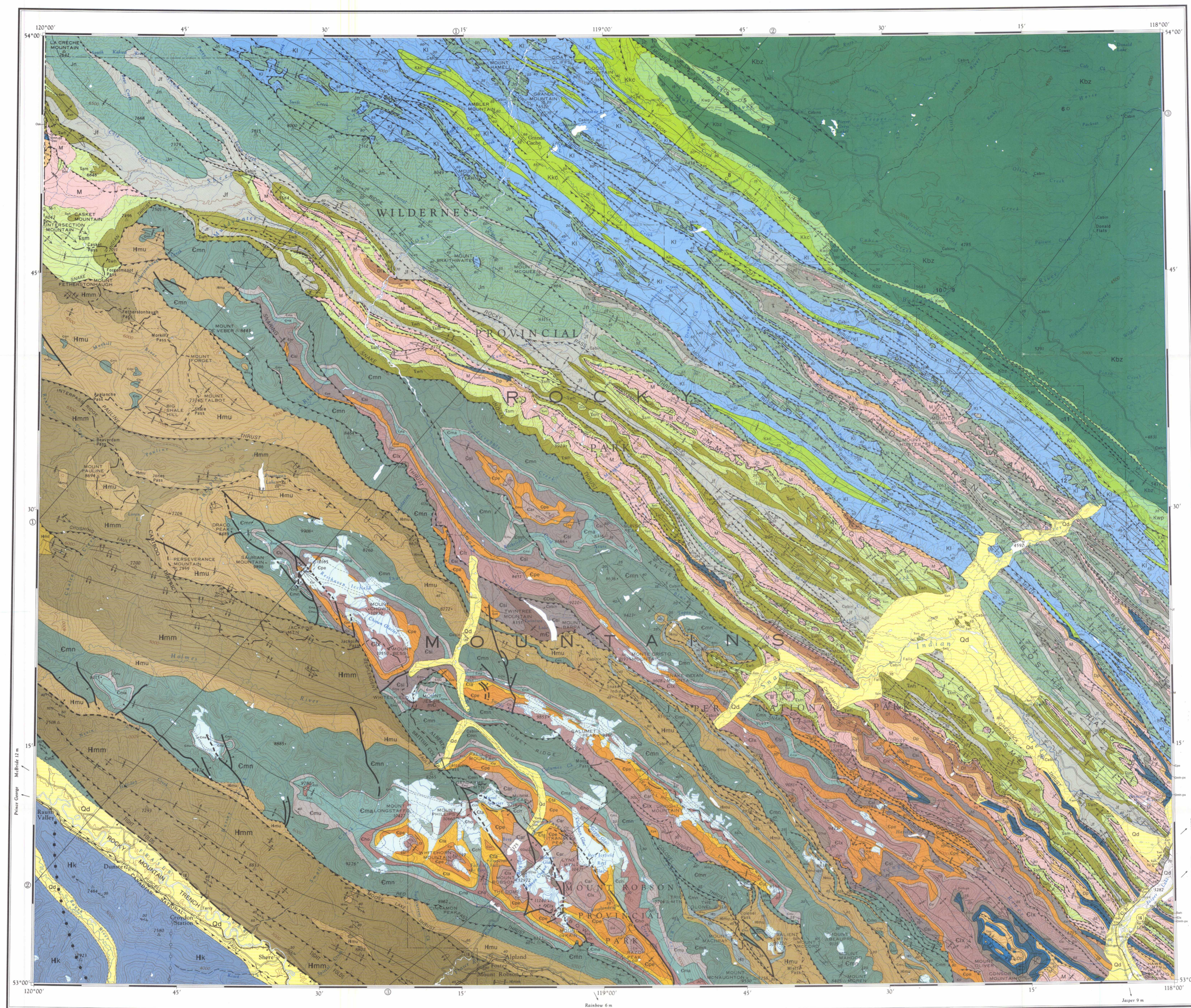


LEGEND

CENOZOIC	QUATERNARY PLEISTOCENE AND RECENT	Qd	Till; alluvium; colluvium	
	CRETACEOUS UPPER CRETACEOUS	Kbz	BRAZEAU FORMATION: sandstone; shale; conglomerate; minor coal and ash beds	
MESOZOIC		Kwp	ALBERTA GROUP (Kkc-Kwp) WAPIABI FORMATION: dark grey to black shale; sandy shale; minor sandstone with concretions	ALBERTA GROUP Undivided on structure sections
		Kkc	KASKAPAU AND CARDIUM FORMATIONS: black fissile shale and silty shale (Kaskapau Fm); crossbedded sandstone, siltstone and silty shale (Cardium Fm)	
		Kl	LOWER CRETACEOUS LUSCAR FORMATION: (including Durvegan Formation and Fort St. John Group); sandstone; silty shale; shale; conglomerate; coal seams in lower half	
		Kc	CADOMIN FORMATION: conglomerate; minor sandstone	
		Jn	JURASSIC AND (?) CRETACEOUS UPPER JURASSIC AND (?) LOWER CRETACEOUS NIKANASSIN FORMATION: sandstone; sandy shale; carbonaceous shale	
		Jf	FERNIE GROUP: black shale; silty shale; siltstone, in part concretionary; minor glauconite	
		Twh	TRIASSIC SPRAY RIVER GROUP (Tsm-Twh) WHITEHORSE FORMATION: white limestone; sandy dolostone; red mudstone	TRIASSIC SPRAY RIVER GROUP Undivided
		Tsm	SULPHUR MOUNTAIN FORMATION: dark brown silty shale; siltstone; sandstone; minor calcareous sandstone	
		T	TRIASSIC AND JURASSIC Undivided on structure sections	
		M	PERMIAN ISHBEL GROUP: chert and cherty grey sandstone	
PALEOZOIC		M	MISSISSIPPIAN BANFF FORMATION AND RUNDLE GROUP: argillaceous limestone, calcareous shale (Banff Formation); grey dolostone, crinoid limestone, cherty dolostone (Rundle Group)	
		Dp	DEVONIAN UPPER DEVONIAN PALLISER FORMATION: massive dolomitic limestone	
		Das	SASSENACH FORMATION: sandstone, siltstone, silty limestone	
		Df	FAIRHOLME GROUP Carbonate facies - CAIRN AND SOUTHEK FORMATIONS: grey limestone and dolostone with stromatolites and Amphipora; includes some Sassenach Formation east of Blue and Vine Creeks	Dmh-px Basin facies - FLUME, FERDIX AND MOUNT HAWK FORMATIONS: calcareous mudstone, argillaceous limestone, black shale; cherty limestone
		D	ORDOVICIAN LOWER AND MIDDLE ORDOVICIAN SKOKI FORMATION: dolostone; sandy dolostone; sandstone	
		COsp	CAMBRIAN AND ORDOVICIAN SURVEY PEAK FORMATION: calcareous shale; micritic limestone; limestone conglomerate	
		Cix	CAMBRIAN UPPER CAMBRIAN LYNX GROUP: dolostone; siltstone; limestone	
		Car	MIDDLE CAMBRIAN ARCTOMYS FORMATION: red and green shale; dolomitic siltstone; shaly dolostone	
		Cpe	ELDON AND PIKA FORMATIONS: dense, grey, limestone and dolostone; argillaceous and shale interbeds in upper part	
		Cta	TATEI FORMATION: grey limestone; argillaceous limestone	
PROTEROZOIC		Cch	CHETANG FORMATION: grey limestone interbedded with argillaceous limestone and shale, siltstone	
		Cho	LOWER CAMBRIAN HOTA FORMATION: massive limestone and dolostone; minor sandstone	
		Cma	GOG GROUP (Cm-Cma) MAHTO FORMATION: fine grained quartz sandstone and siltstone	
		Cmu	MURAL FORMATION: limestone and dolostone with interbeds of shale and siltstone	
		Cg	GOG GROUP: undivided in eastern part of map sheet and structure sections	
		Cmn	CAMBRIAN AND/OR HADRYNIAN LOWER CAMBRIAN AND/OR HADRYNIAN McNAUGHTON FORMATION: massive quartz sandstone; siltstone; minor pebble conglomerate	
		Hmu	MIETTE GROUP (Hmi-Hmu) Upper Miette Group: silty argillite and mudstone; feldspathic sandstone and granitic conglomerate, locally includes Hb, Byng Formation; dolostone	
		Hmm	Middle Miette Group: feldspathic sandstone; granule and pebble conglomerate; siltstone, argillite (may include some Upper Miette southwest of Moose Lake Thrust)	
		Hmi	Lower Miette Group: black slate; argillite; limestone	
		Hk	KAZA GROUP: feldspathic sandstone; granule and pebble conglomerate; micaceous, metamorphosed; occurs only in SW corner of map sheet	

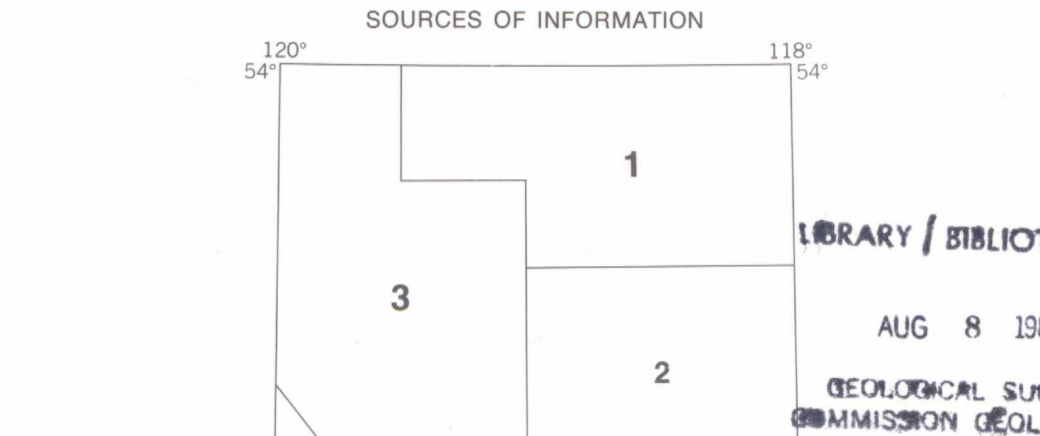


Geology by E. W. Mountjoy, 1978; based on field work by E. W. Mountjoy 1959-1973, and published and unpublished maps of the Geological Survey of Canada (see sources of information)

LIST OF OIL AND GAS WELLS LOCATION

CB et al Findley 11-12-58-7	1
PCP et al Findley 10-32-57-6	2
PCP et al Findley 5-26-57-6	3
PCP et al Findley 16-23-57-6	4
Imperial Muskeg 14-13-57-6	5
Imperial Kaskau 4-13-57-2	6
PCP et al Findley 5-8-57-5	7
Shell Mahon Creek 6-23-56-6	8
Dome et al Cabin Creek 6-9-55-9	9
Shell Cabin Creek 4-9-55-3	10
Quasar et al Moberly 11-23-53-2	11
Trud Wilbey 9-35-52-2	12

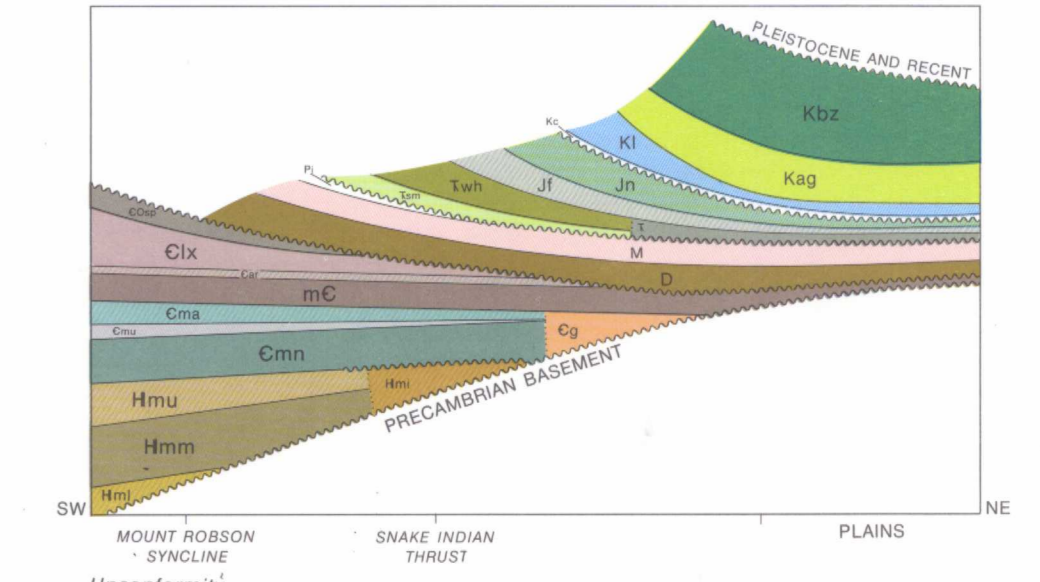
Diagrammatic structure section using available well data by E. W. Mountjoy



1. Maps compiled by E. J. W. Irish in 1965 (GSC Memoir 334)
2. Published map by E. W. Mountjoy, 1964 (GSC Map 47-1963)
3. Unpublished geology by E. W. Mountjoy, 1966-73
4. Unpublished geology by R. B. Campbell, 1966-77

For specific references see GSC Index Sheet 83, GSC Papers 61-31 and 72-35, and GSC Memoir 334

SCHEMATIC STRATIGRAPHIC RELATIONSHIPS



Geological cartography by D. J. Walter, Institute of Sedimentary and Petroleum Geology, Geological Survey of Canada

Any revisions or additional geological information known to the user would be welcomed by the Geological Survey of Canada

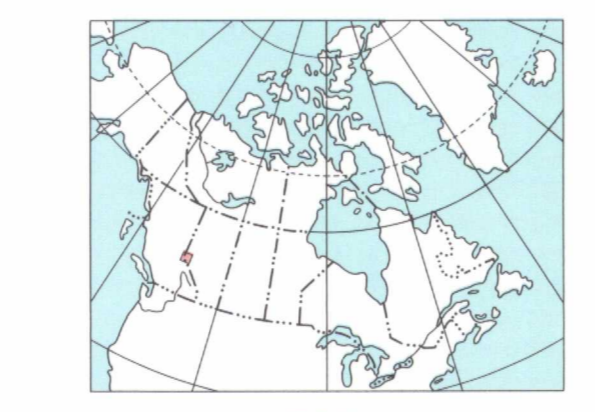
Base map at the same scale published by the Surveys and Mapping Branch, 1964

Copies of the topographical edition of this map may be obtained from the Canada Map Office, Department of Energy, Mines and Resources, Ottawa

Magnetic declination 1979 varies from 2°42' 9" easterly at centre of west edge to 2°07' 2" easterly at centre of east edge. Mean annual change 5.1 westerly

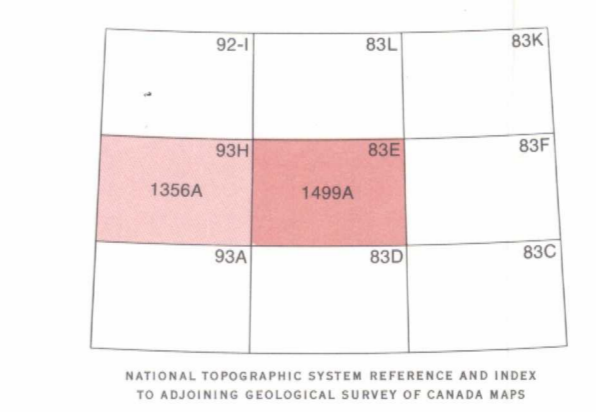
Elevations in feet above mean sea level

Copies of this map may be obtained from the Geological Survey of Canada, 601 Booth Street, Ottawa, Ontario K1A 0E9, 3303 - 33rd Street N.W., Calgary, Alberta T2S 2A7



MAP 1499A
GEOLOGY
MOUNT ROBSON
WEST OF SIXTH MERIDIAN
ALBERTA-BRITISH COLUMBIA
Scale 1:250,000

Transverse Mercator Projection
© Crown Copyrights reserved



NOT TO BE TAKEN FROM LIBRARY
NE PAS SORTIR DE LA BIBLIOTHÈQUE