

LEGEND

- QUATÉRIENNAIRE: COLLUVIAL SEDIMENTS: latest deposits of alluvium... HOLOCÈNE: MARINE SEDIMENTS: sand, gravel, silt, clay... ALLOUVIAUX: terraces and floodplains... LATE WISCONSINIAN AND/OR EARLY HOLOCÈNE: LACUSTRIAN SEDIMENTS: sand, silt, gravel... MARINE SEDIMENTS: sand, silt, gravel... LACUSTRIAN AND MARINE SEDIMENTS: undifferentiated... LATE WISCONSINIAN: GLACIOLUVIAL SEDIMENTS: sand, gravel, silt and clay... MORAINAL SEDIMENTS: till, ablation till... WISCONSINIAN: GLACIOLUVIAL SEDIMENTS: ice-contact... MORAINAL AND COLLUVIAL SEDIMENTS: loamy till... PRE-QUATÉRIENNAIRE: Rock, various lithologies and ages...

Note: Lb, Wb, or Mb may overlie another Quaternary unit (e.g. Wb, Mb) / Gx, Gx

- Geological boundary: Fluted bedrock and drumhead ridges... Dunes: Sand dunes... Beach ridges: Sand dunes... River channels: River channels... Other: Other features...

Geology by V.N. Rampton, 1983-83 / Terrain Analysis and Mapping Services Ltd.

Cartographie géologique par R.Y. Pithin, Commission géologique du Canada

Any revisions or additional geological information known to the user would be welcomed by the Geological Survey of Canada

Base map assembled by the Geological Survey of Canada from maps published at the same scale by the Survey and Mapping Branch in 1976, 1977

Carte de base assemblée par la Commission géologique du Canada à partir de cartes publiées à la même échelle par la Direction des cartes et de la cartographie en 1976, 1977

Mean magnetic declination 1984, 2114.6 West, decreasing 4.4 annually. Readings vary from 1916.0 in the SW corner to 2212.7 in the NE corner of the map area

Élévation en feet above mean sea level

Geology by V.N. Rampton, 1983-83 / Terrain Analysis and Mapping Services Ltd.

Cartographie géologique par R.Y. Pithin, Commission géologique du Canada

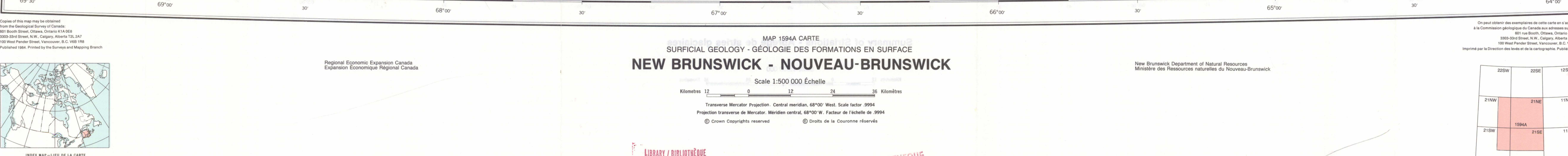
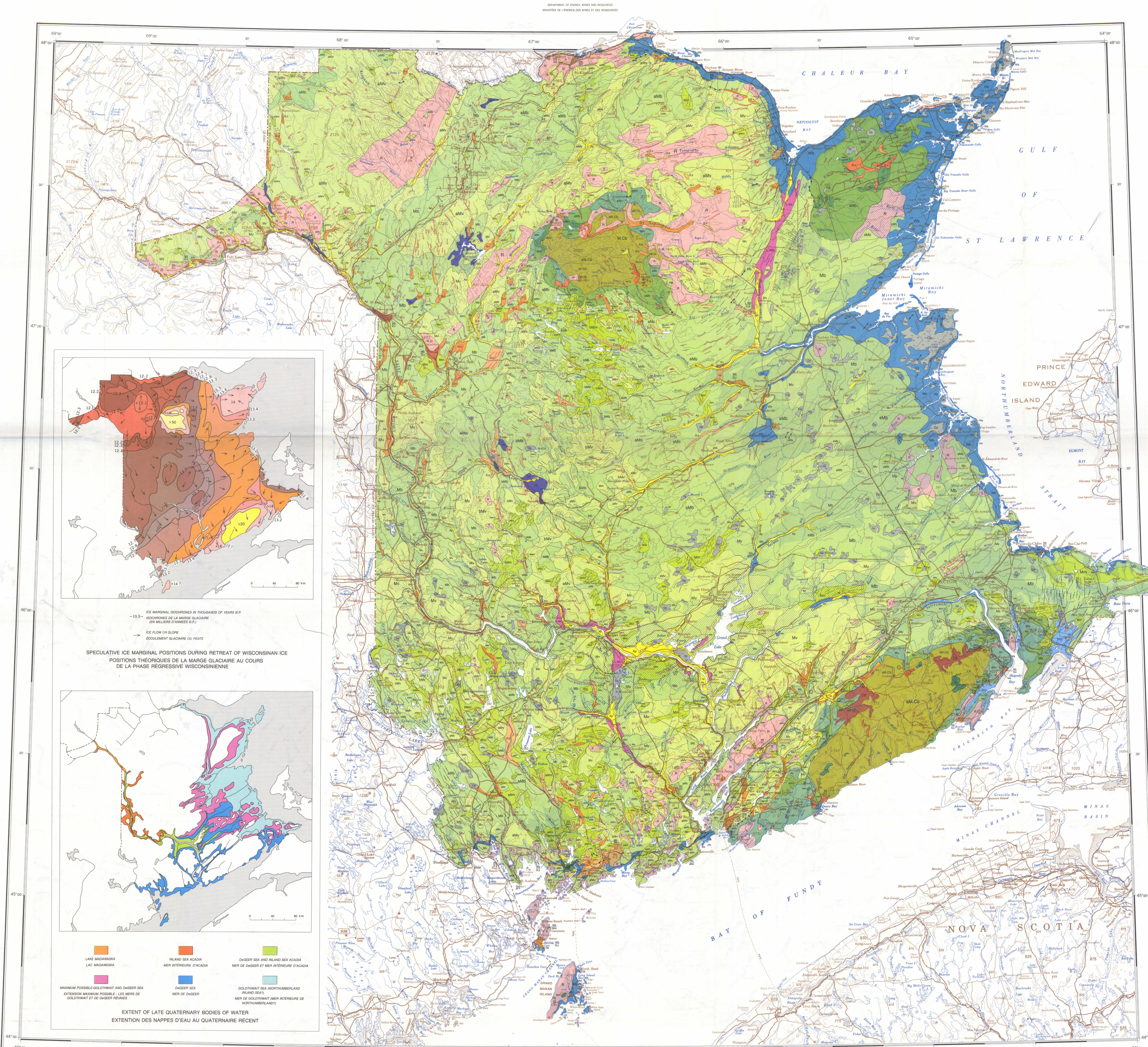
Any revisions or additional geological information known to the user would be welcomed by the Geological Survey of Canada

Base map assembled by the Geological Survey of Canada from maps published at the same scale by the Survey and Mapping Branch in 1976, 1977

Carte de base assemblée par la Commission géologique du Canada à partir de cartes publiées à la même échelle par la Direction des cartes et de la cartographie en 1976, 1977

Mean magnetic declination 1984, 2114.6 West, decreasing 4.4 annually. Readings vary from 1916.0 in the SW corner to 2212.7 in the NE corner of the map area

Élévation en feet above mean sea level



MAP 1994A CARTE / SURFICIAL GEOLOGY - GÉOLOGIE DES FORMATIONS EN SURFACE / NEW BRUNSWICK - NOUVEAU-BRUNSWICK / Scale 1:500 000 Echelle

Regional Economic Expansion Canada / Expansion Économique Régionale Canada / New Brunswick Department of Natural Resources / Ministère des Ressources Naturelles du Nouveau-Brunswick

LEGENDE

- QUATÉRIENNAIRE: COLLUVIAUX: dépôts de alluvions... HOLOCÈNE: SÉDIMENTS MARINS: sable, gravier, argile... ALLOUVIAUX: terrasses et lits de faibles eaux... SÉDIMENTS ORGANIQUES: marais, tourbières... WISCONSINIEN ANCIEN ET/OU HOLOCÈNE RÉCENT: SÉDIMENTS LACUSTRIENS: sable, argile... SÉDIMENTS FLUVO-GLACIAIRES: sable, gravier... SÉDIMENTS MORAINIQUES: moraines d'ablation... WISCONSINIEN: SÉDIMENTS FLUVO-GLACIAIRES: sable, gravier... SÉDIMENTS MORAINIQUES: moraines d'ablation... WISCONSINIEN ET COLLUVIAUX: till et colluvions... PRÉ-QUATÉRIENNAIRE: Roche: lithologies et âges divers...

Note: Lb, Wb, or Mb recourent une autre unité quaternaire (e.g. Wb, Mb) / Gx, Gx

- Limite géologique: Sable: sable et till... Dunes: Dunes... Beach ridges: Beach ridges... River channels: River channels... Other: Other features...

Geology by V.N. Rampton, 1983-83 / Terrain Analysis and Mapping Services Ltd.

Cartographie géologique par R.Y. Pithin, Commission géologique du Canada

Any revisions or additional geological information known to the user would be welcomed by the Geological Survey of Canada

Base map assembled by the Geological Survey of Canada from maps published at the same scale by the Survey and Mapping Branch in 1976, 1977

Carte de base assemblée par la Commission géologique du Canada à partir de cartes publiées à la même échelle par la Direction des cartes et de la cartographie en 1976, 1977

Mean magnetic declination 1984, 2114.6 West, decreasing 4.4 annually. Readings vary from 1916.0 in the SW corner to 2212.7 in the NE corner of the map area

Élévation en feet above mean sea level

Geology by V.N. Rampton, 1983-83 / Terrain Analysis and Mapping Services Ltd.

Cartographie géologique par R.Y. Pithin, Commission géologique du Canada

Any revisions or additional geological information known to the user would be welcomed by the Geological Survey of Canada

Base map assembled by the Geological Survey of Canada from maps published at the same scale by the Survey and Mapping Branch in 1976, 1977

Carte de base assemblée par la Commission géologique du Canada à partir de cartes publiées à la même échelle par la Direction des cartes et de la cartographie en 1976, 1977

Mean magnetic declination 1984, 2114.6 West, decreasing 4.4 annually. Readings vary from 1916.0 in the SW corner to 2212.7 in the NE corner of the map area

Élévation en feet above mean sea level