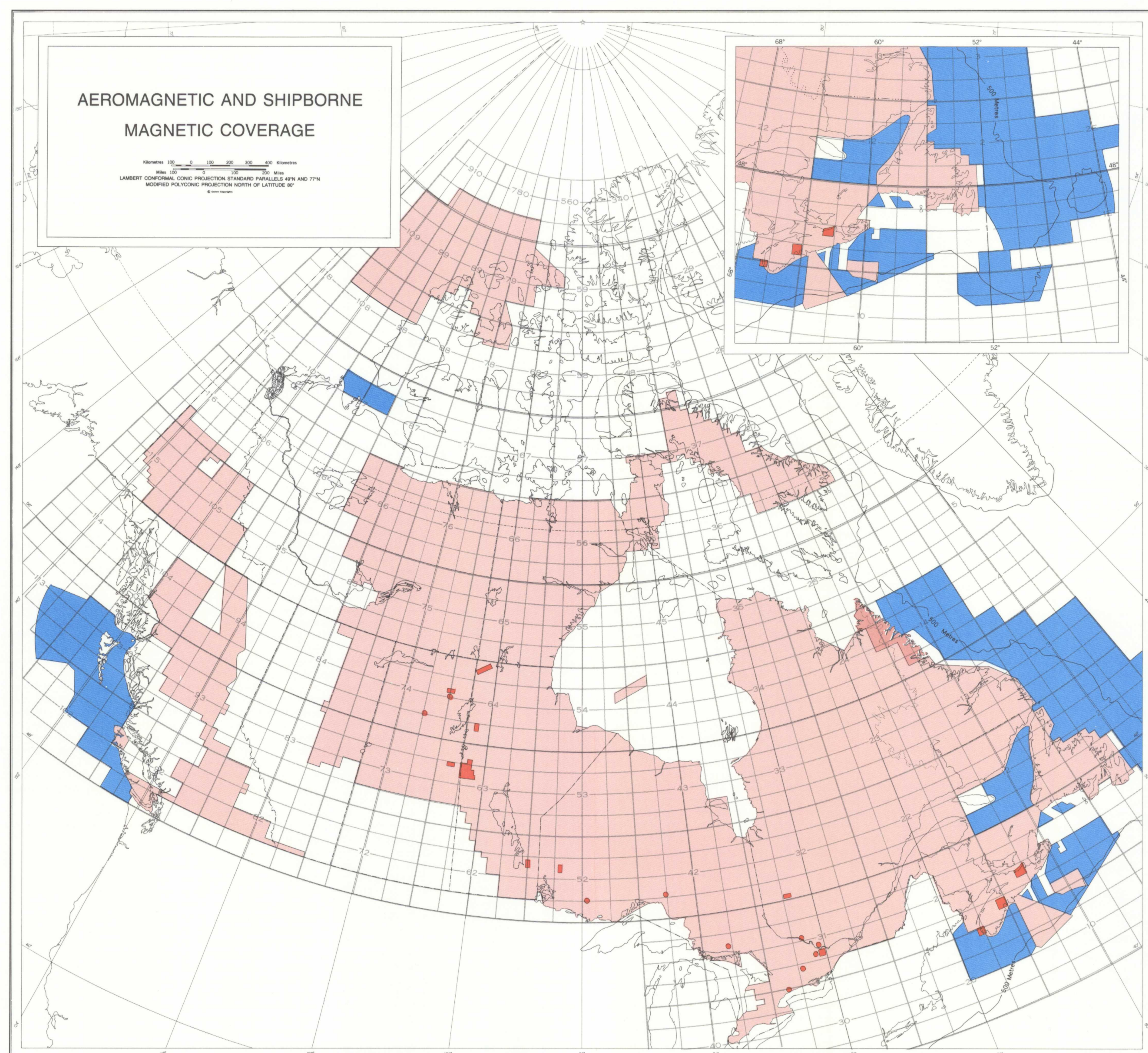
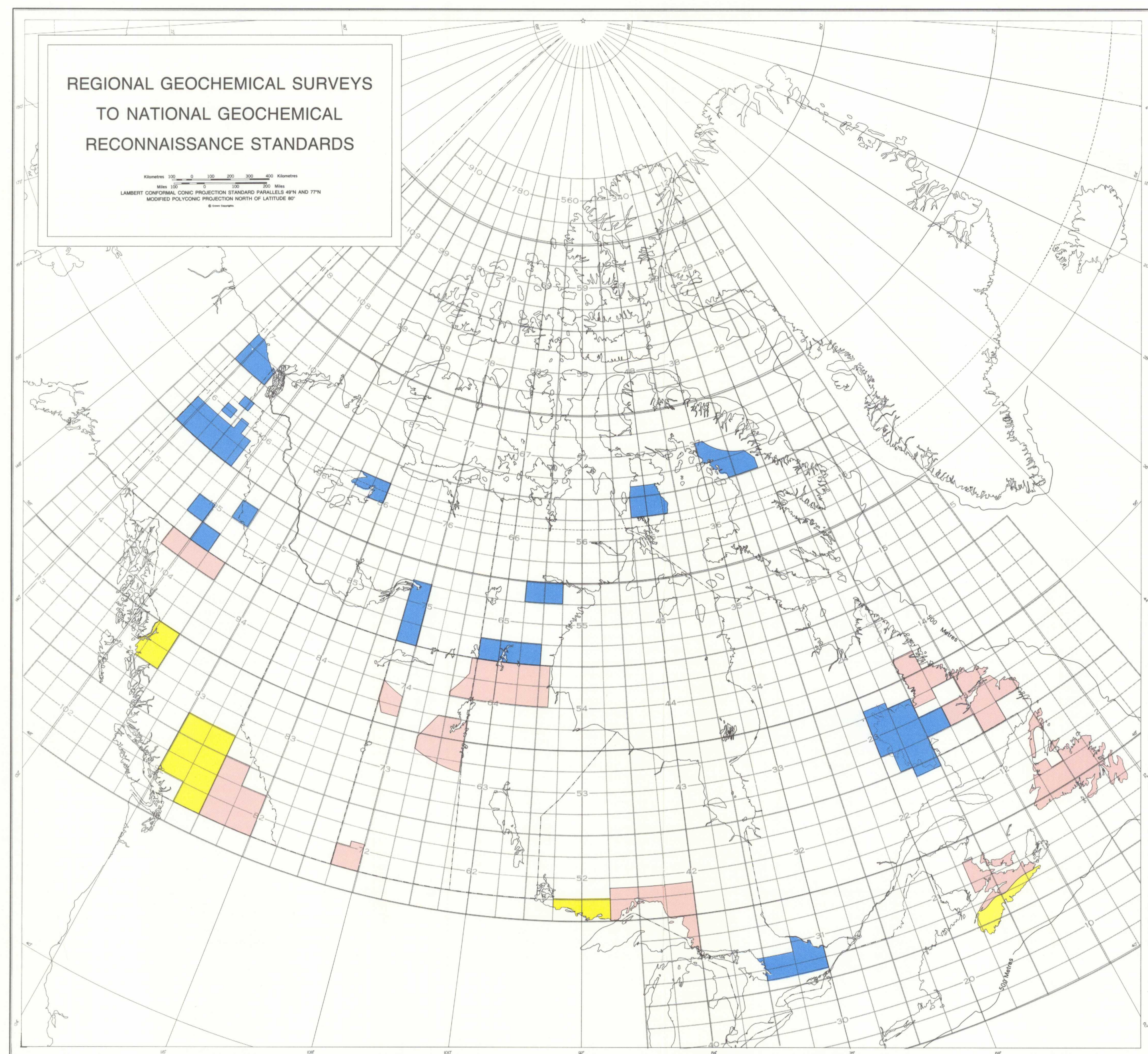
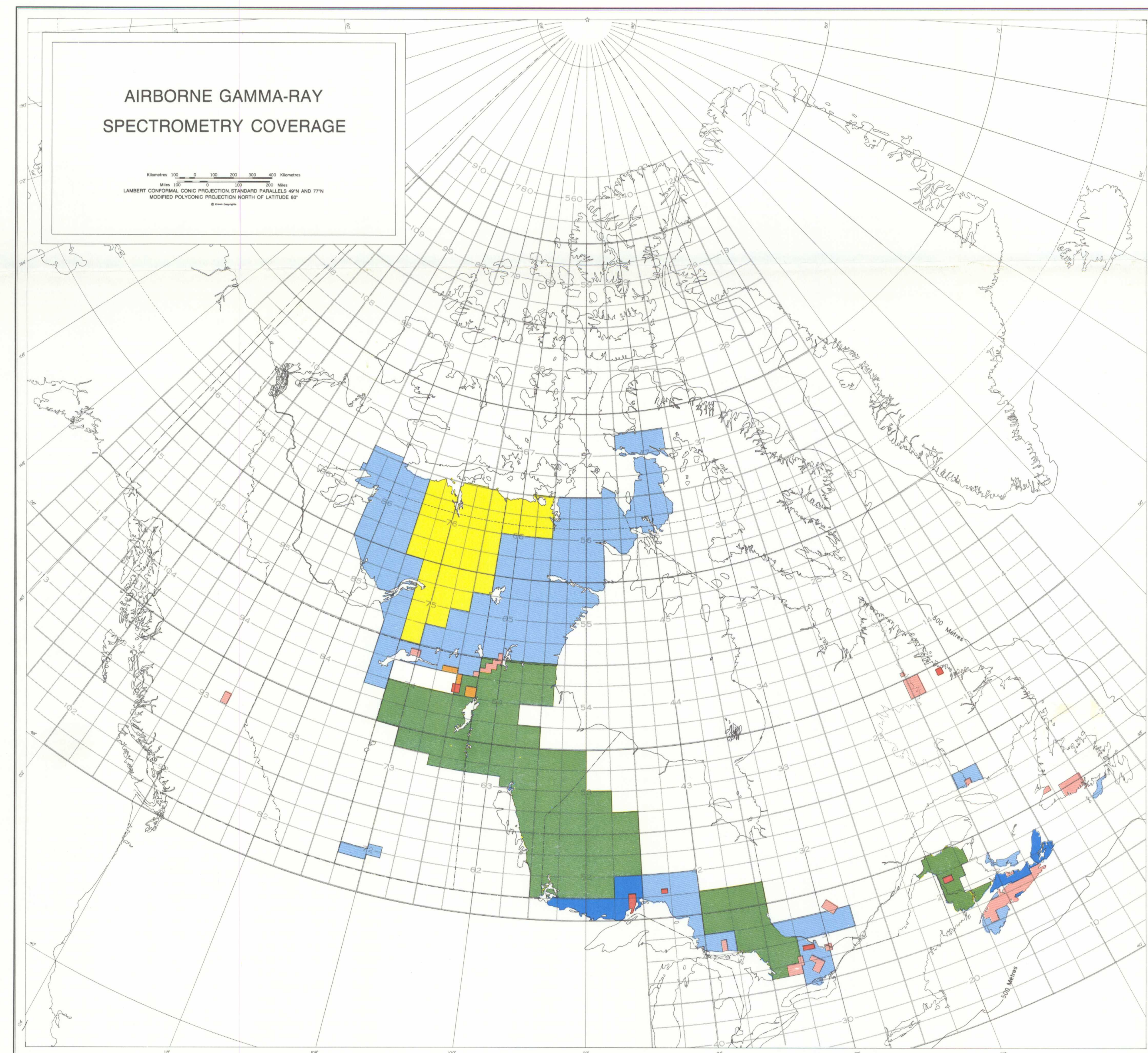
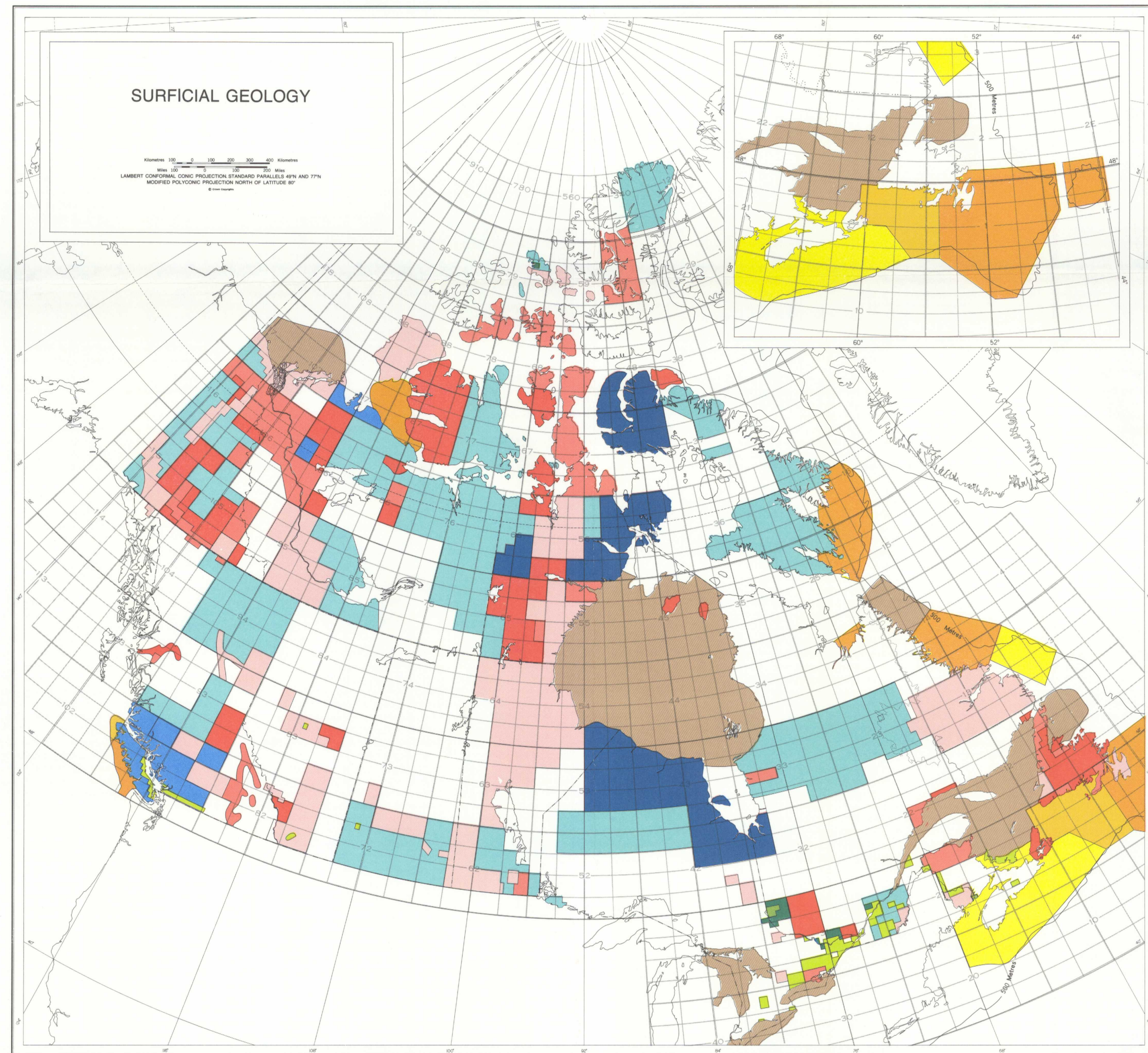
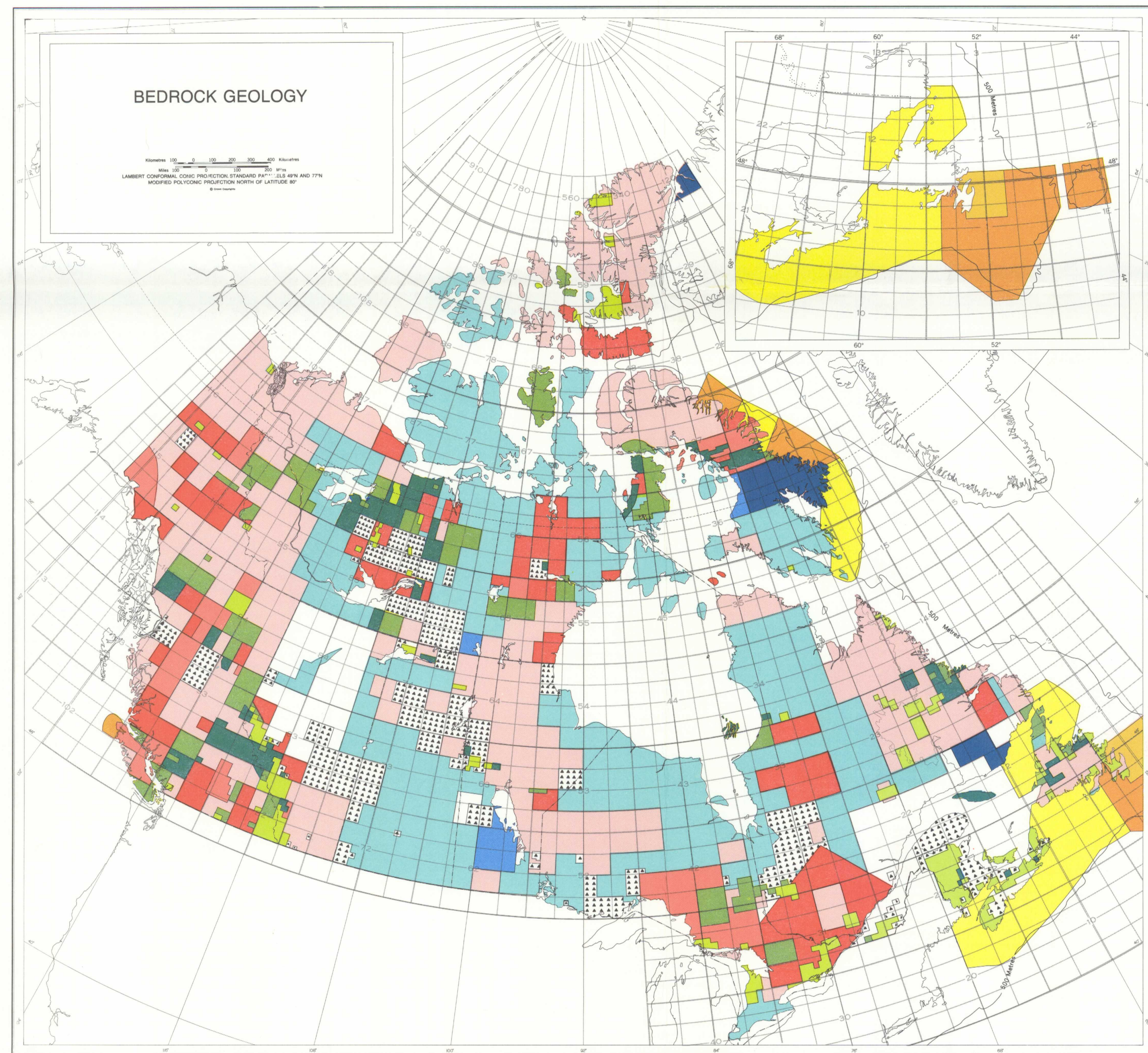


NOT TO BE TAKEN FROM LIBRARY
 NE PAS SORTIR DE LA BIBLIOTHÈQUE



LEGEND

BEDROCK GEOLOGY

■ PUBLISHED	■ OPEN FILE	■ IN PROGRESS	Maps at a scale smaller than 1:250 000, mainly 1:500 000
■	■	■	Maps at a scale of 1:250 000
■	■	■	Maps at a scale greater than 1:250 000, mainly 1:50 000
■	■	■	Mainly 1:500 000 scale, in offshore areas
	Maps published at various scales, 1920 to 1950		

AIRBORNE GAMMA-RAY SPECTROMETRY COVERAGE

■ PUBLISHED	■ IN PROGRESS	DETAILED SURVEYS FEDERAL FUNDING 1 km
■	■	FEDERAL FUNDING 5 km
■	■	FEDERAL FUNDING 25 km
■	■	DETAILED SURVEYS FEDERAL PROVINCIAL FUNDING
■		FEDERAL PROVINCIAL FUNDING 5 km

SURFICIAL GEOLOGY

■ PUBLISHED	■ OPEN FILE	■ IN PROGRESS	RECOGNITION: Maps at a scale smaller than 1:250 000 - commonly depict only landforms and features - may show distribution of surface materials, but information based largely on airphoto interpretation with limited ground verification
■	■	■	INVENTORY: Map scales range from 1:100 000 to 1:250 000 - show distribution of surface materials and landforms
■	■	■	DETAILED: Large scale maps, generally at 1:50 000 - show distribution of surface materials and landforms - mapping involved considerable field checking
■	■	■	INVENTORY: (offshore) Map scales range from 1:250 000 to 1:500 000 - show distribution of surficial materials
■	RECOGNITION: (offshore) Maps at a scale smaller than 1:500 000; show general texture of bottom sediments; in many cases the maps are published as page figures		

REGIONAL GEOCHEMICAL SURVEYS TO NATIONAL GEOCHEMICAL RECONNAISSANCE STANDARDS

■	FEDERAL PROVINCIAL FUNDING
■	FEDERAL FUNDING
■	PROVINCIAL FUNDING

AEROMAGNETIC AND SHIPBORNE MAGNETIC COVERAGE

■	AEROMAGNETIC COVERAGE Federal funding north of 60°; federal-provincial and federal funding plus minor amounts of private and provincial data south of 60°
■	AEROMAGNETIC COVERAGE IN PRESS
■	SHIPBORNE MAGNETIC COVERAGE - NATURAL RESOURCE CHARTS: 1:250 000 - Bathymetric and gravity data also available for most charts
■ ●	HIGH RESOLUTION AEROMAGNETIC VERTICAL GRADIENT

1:1 000 000 GEOLOGICAL ATLAS SERIES

PUBLISHED ■ IN PROGRESS ■



NOT TO BE TAKEN FROM LIBRARY
 NE PAS SORTIR DE LA BIBLIOTHÈQUE

MAP 1580A
 SYSTEMATIC REGIONAL INVESTIGATIONS
 FIRST EDITION 1983
 1st Ed
 1580A (e)

This map has been produced from a scanned version of the original map
 Reproduction par numérisation d'une carte sur papier