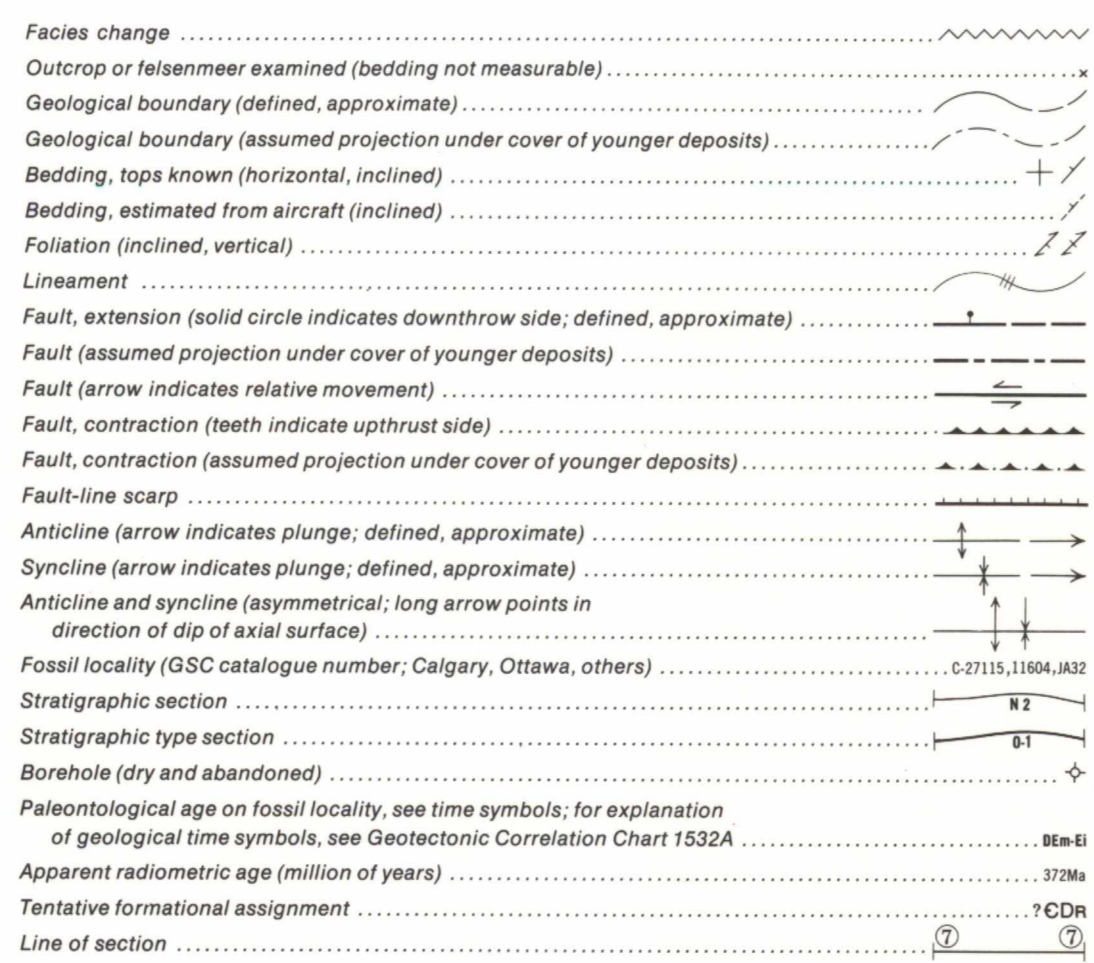
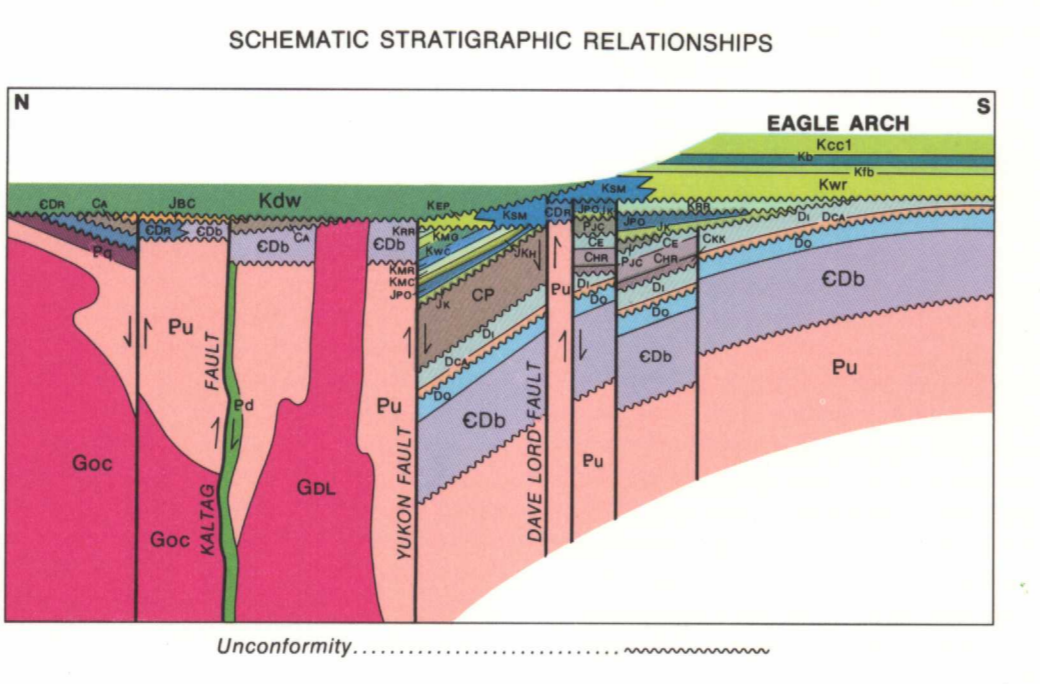


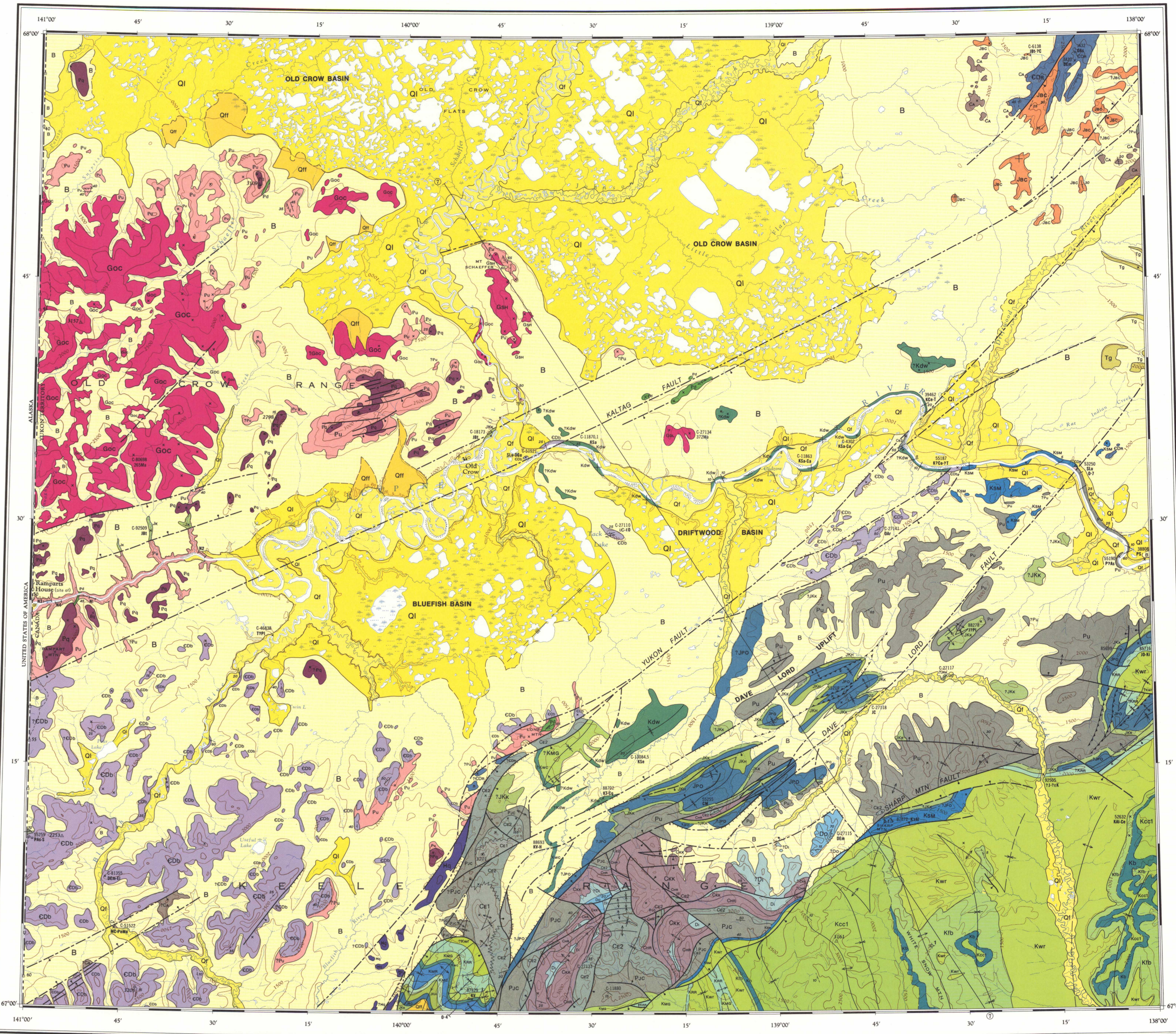
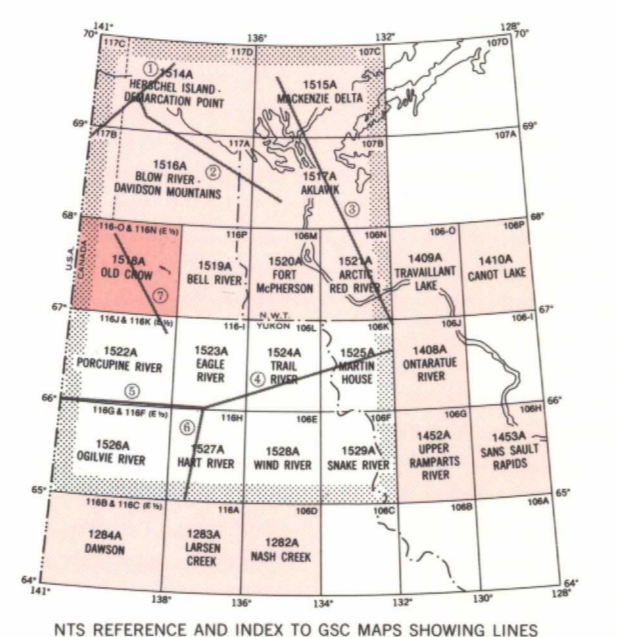
Geological legend table with columns for geological age (Quaternary, Tertiary, Cretaceous, Jurassic, Permian, Carboniferous, Devonian, Cambrian, Helikian, Aphebian) and geological unit (e.g., Qr, Qh, Ql, B, Kcc1, Kcb, Kfb, Kwr, Ksm, Krr, Kmg, Kwc, Kmr, Kmc, Jkh, Jpc, Jjk, Jbc, Pjc, Ce2, Ce1, Chr, Cck, Di, Dca, Do, Cdb, Cdr, Pq, Pu, Pd, Hq). Includes descriptions of rock types and depositional environments.



Geology by D.K. Norris, 1976
WELL SCHEDULE
1. Socony Mobil Western Minerals Molar YT P-34; T.D. 2652 m
ACKNOWLEDGMENTS
Geological synthesis based on field observations and/or paleontological determinations made by the following geologists, listed with years of field activity where applicable: Geological Survey of Canada - E.W. Bamler, D.D. Cairnes, 1911, 1912; W.S. Hopkins, O.L. Hughes, 1962, 1973; J.A. Jezletzky, A.J. Jenik, 1962; R.G. McConnell, 1988; E.W. Mountjoy, 1962; B.S. Norford, 1962; D.K. Norris, 1962, 1970, 1975; J. Pilon, 1972; T.P. Poulton, 1975; R.A. Price, 1962; R.M. Procter, 1962; G.C. Taylor, 1962; T.T. Uyeno; R.K. Wanless, U.S. Geological Survey - A.G. Maddren, 1911, 1912. Industry - Shell Canada Ltd., 1971; Western Minerals Co. Ltd., 1961; Royal Ontario Museum - P.H. von Bitter; University of Montreal - B.L. Mamet; University of Western Ontario - A.C. Lenz.



Geological cartography by G.S. Whitman, Institute of Sedimentary and Petroleum Geology, Geological Survey of Canada
Any revisions or additional geological information known to the user would be welcomed by the Geological Survey
Base map at the same scale published by the Surveys and Mapping Branch in 1959
Copies of the topographical edition of this map may be obtained from the Canada Map Office, Department of Energy, Mines and Resources, Ottawa, Ontario
Magnetic declination 1980 varies from 3°33.9' easterly at centre of west edge to 3°57.9' easterly at centre of east edge. Mean annual change 5.4' westerly
Elevations in feet above mean sea level



Copies of this map may be obtained from the Geological Survey of Canada, 601 Booth Street, Ottawa, Ontario K1A 0G8, 3303 - 33rd Street N.W., Calgary, Alberta T2L 2A7

MAP 1518A
GEOLOGY
OLD CROW
YUKON TERRITORY
Scale 1:250,000
Kilometres 0 5 10 15 20
Miles 0 4 8
Transverse Mercator Projection
© Crown Copyrights reserved

THE STRUCTURE SECTION DIAGRAM AND GEOTECTONIC CORRELATION CHART FOR THE AREA COVERED BY MAPS 1514A TO 1529A ARE AVAILABLE SEPARATELY AS SHEETS 1530A AND 1532A

NOT TO BE TAKEN FROM LIBRARY
NE PAS SORTIR DE LA BIBLIOTHÈQUE