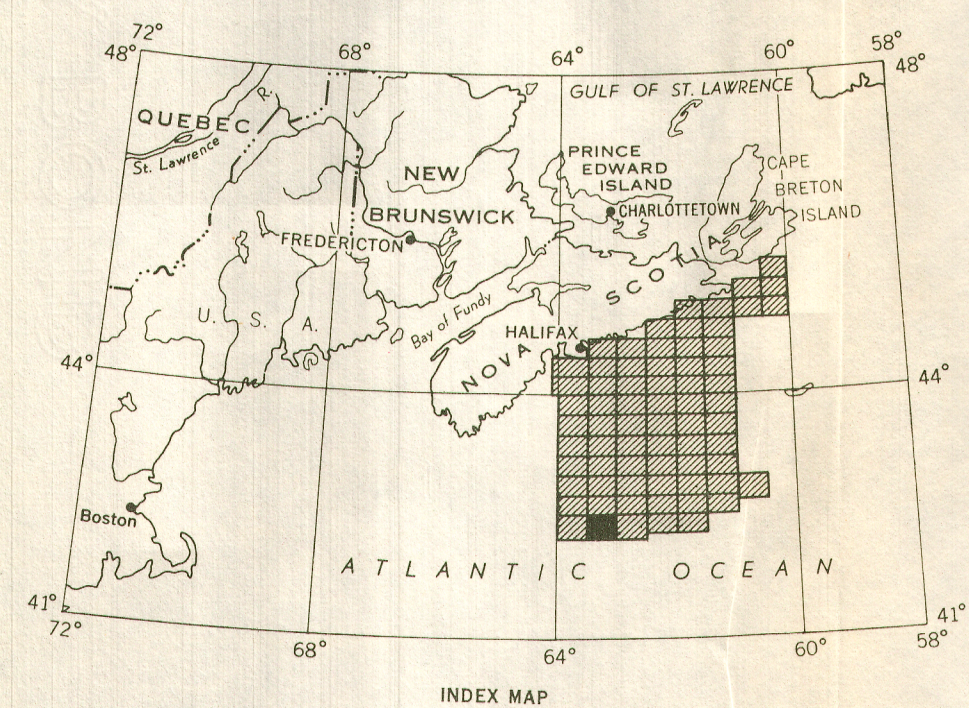
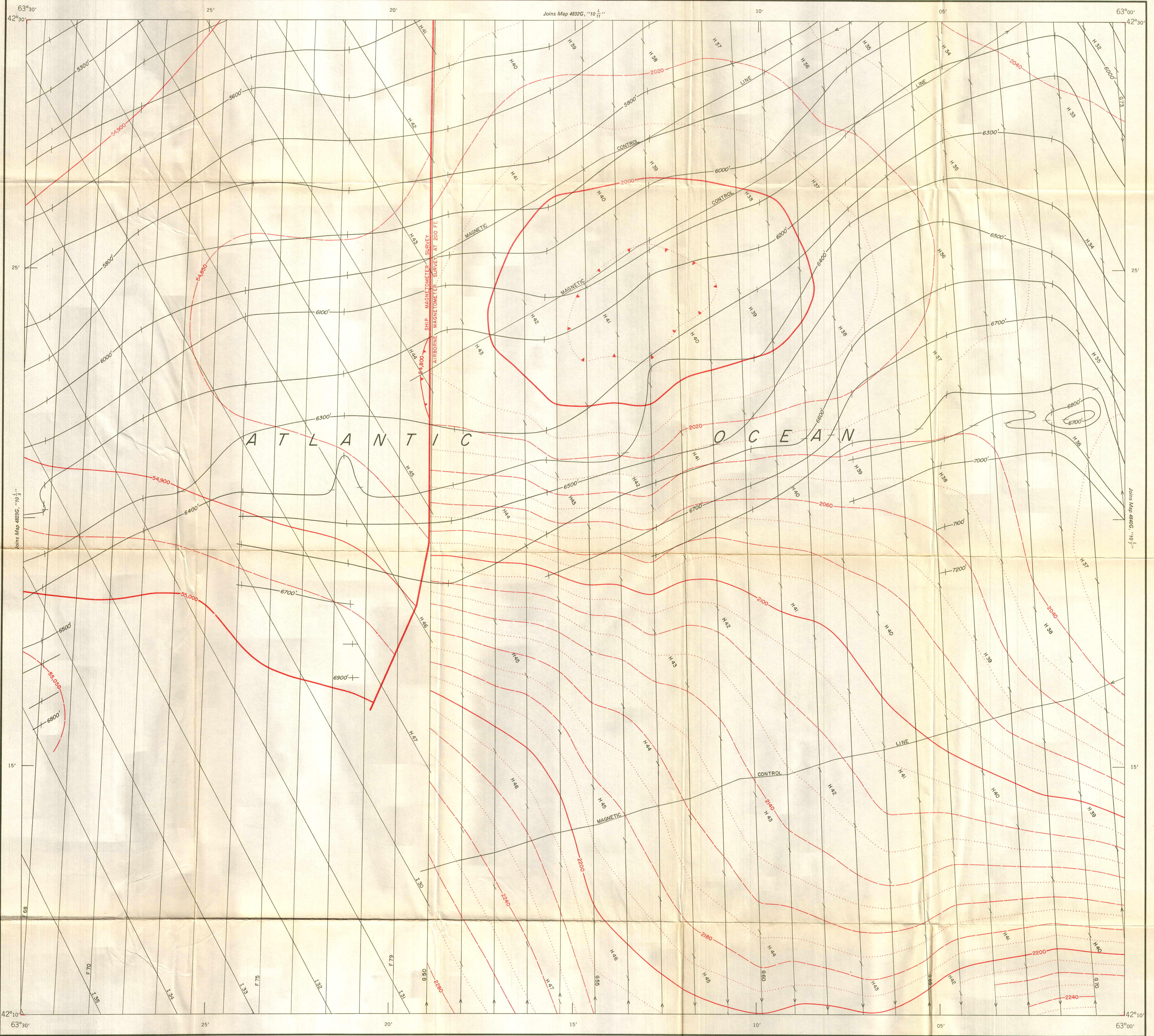


GEOLOGICAL SURVEY OF CANADA  
DEPARTMENT OF MINES AND TECHNICAL SURVEYS

SHIP MAGNETOMETER AND AEROMAGNETIC SERIES

SHEET 10  $\frac{L}{6}$  AND PART OF 10  $\frac{L}{3}$



ISOMAGNETIC LINES (absolute total field)

- 500 gammas
- 100 gammas
- 50 gammas
- Magnetic depression

Ship's track and bathymetric contours  
in feet below sea-level

The ship magnetometer survey was conducted between May and Oct. 1962, using a direct-reading proton free-precession magnetometer. The ship's position was controlled by Nova Scotia Decca Chain 7. The survey and subsequent compilation were carried out by personnel from the Geophysics Division, Geological Survey of Canada. Drafting by Spartan Air Services Ltd.

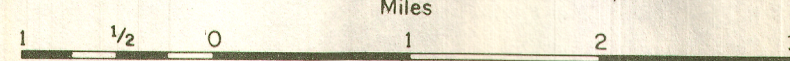
No correction has been made for regional variation.

MAP 4831G

SCOTIAN SHELF

10  $\frac{L}{6}$   
AND PART OF 10  $\frac{L}{3}$

Scale: One Inch to One Mile =  $\frac{1}{63,360}$  Miles



ISOMAGNETIC LINES (total field)

- 500 gammas
- 100 gammas
- 20 gammas
- 10 gammas
- Magnetic depression

Aircraft track  
Flight altitude: 200 feet above sea-level

A correction has been made for regional variation of the earth's magnetic field; this regional variation decreases at a uniform rate of 6.3 gammas per mile in a direction 35° east of south.

The aeromagnetic survey was carried out between May and October 1962, by 415 Squadron, RCAF, Summerside, using an AN ASQ 8 magnetic airborne detector especially modified by the National Aeronautical Establishment for this survey. The survey and subsequent compilation were supervised by personnel from the Geological Survey of Canada. The magnetic contours drawn in red on this map were compiled from total intensity data recorded at 1/30 mile intervals along the flight lines shown in grey. Nova Scotia Decca Chain 7, an electronic positioning system, was used to determine the track of the aircraft which was flown along the "purple" Decca lines. The cross-ticks represent the intersection of the "green" Decca lines with the aircraft track. The position of the Decca lines were plotted relative to latitude and longitude, from data given on plotting charts supplied by the Naval Hydrographic Service. The bathymetric contours drawn in grey are given in feet are obtained from echo-sounding records and depth calculations have been made assuming a velocity of sound in sea-water of 4,800 feet per second. The echo-sounding equipment was installed on a Canadian Hydrographic Service ship whose track is indicated by the cross-ticks on the bathymetric contours.

MAP 4831G  
SCOTIAN SHELF  
10  $\frac{L}{6}$  AND PART OF 10  $\frac{L}{3}$

PUBLISHED 1966