

LEGEND

- TERTIARY**
 CARMANAH GROUP (iTe, iTh, Ts)
 OLILOCENE AND/OR MIOCENE
- Ts** SOOKE FORMATION: conglomerate, sandstone
- EOCENE AND OLIGOCENE**
- iTh** HESQUIAT FORMATION: siltstone, shale, sandstone, conglomerate
- iTe** ESCALANTE FORMATION: sandstone, conglomerate
- EOCENE**
- Tg** CATFACE INTRUSIONS: tonalite, granodiorite, hornblende-plagioclase porphyry
- JURASSIC AND CRETACEOUS**
- JKp** PACIFIC RIM COMPLEX: greywacke, siltstone, conglomerate, ribbon chert, pillow lava
- KYUQUOT GROUP (muJk, iKot)**
LOWER CRETACEOUS
- iKot** ONE TREE FORMATION: siltstone, calcareous grit and sandstone
- MIDDLE AND UPPER JURASSIC**
- muJk** KAPOOSE FORMATION: siltstone, shale, greywacke, conglomerate
- JURASSIC**
LOWER JURASSIC
- iJb** BONANZA GROUP (iJb)
 Basaltic to rhyodacitic lava, tuff, breccia; greywacke, siltstone
- Jg** ISLAND INTRUSIONS: granodiorite, quartz diorite, granite
- PALEOZOIC AND MESOZOIC**
WESTCOAST COMPLEX: PMsv, actinolite schist, amphibolite, metasediments; PMdn, quartz diorite, tonalite, agmatite, gneiss, amphibolite
- TRIASIC**
 (MIDDLE ? AND) UPPER TRIASSIC
- uTPb** VANCOUVER GROUP (muTk, uTo, uTPb)
 PARSON BAY FORMATION: calcareous siltstone, shale, limestone
- uTo** QUATSINO FORMATION: limestone
- muTk** KARMUTSEN FORMATION: pillowed and layered basalt, aquagene tuff, breccia
- PALEOZOIC (AND ?)**
SICKER GROUP (Cps)
- Cps** Greywacke, argillite, limestone; includes metadiabase sills
- Geological boundary (approximate)
 Bedding, tops known (horizontal, inclined, overturned)
 Foliation (inclined)
 Fault, lineament (approximate)

Geology compiled by J.E. Muller, 1975

Fieldwork by J.E. Muller, 1968-1970; J.W. Hoadley, 1947-1950;
 J.A. Jezletzky 1950-1954; B.E.B. Cameron, 1971-1973

To accompany Paper 80-16 by J.E. Muller, B.E.B. Cameron
 and K.E. Northcote

Geological cartography by R.L. Allard, Geological Survey of Canada

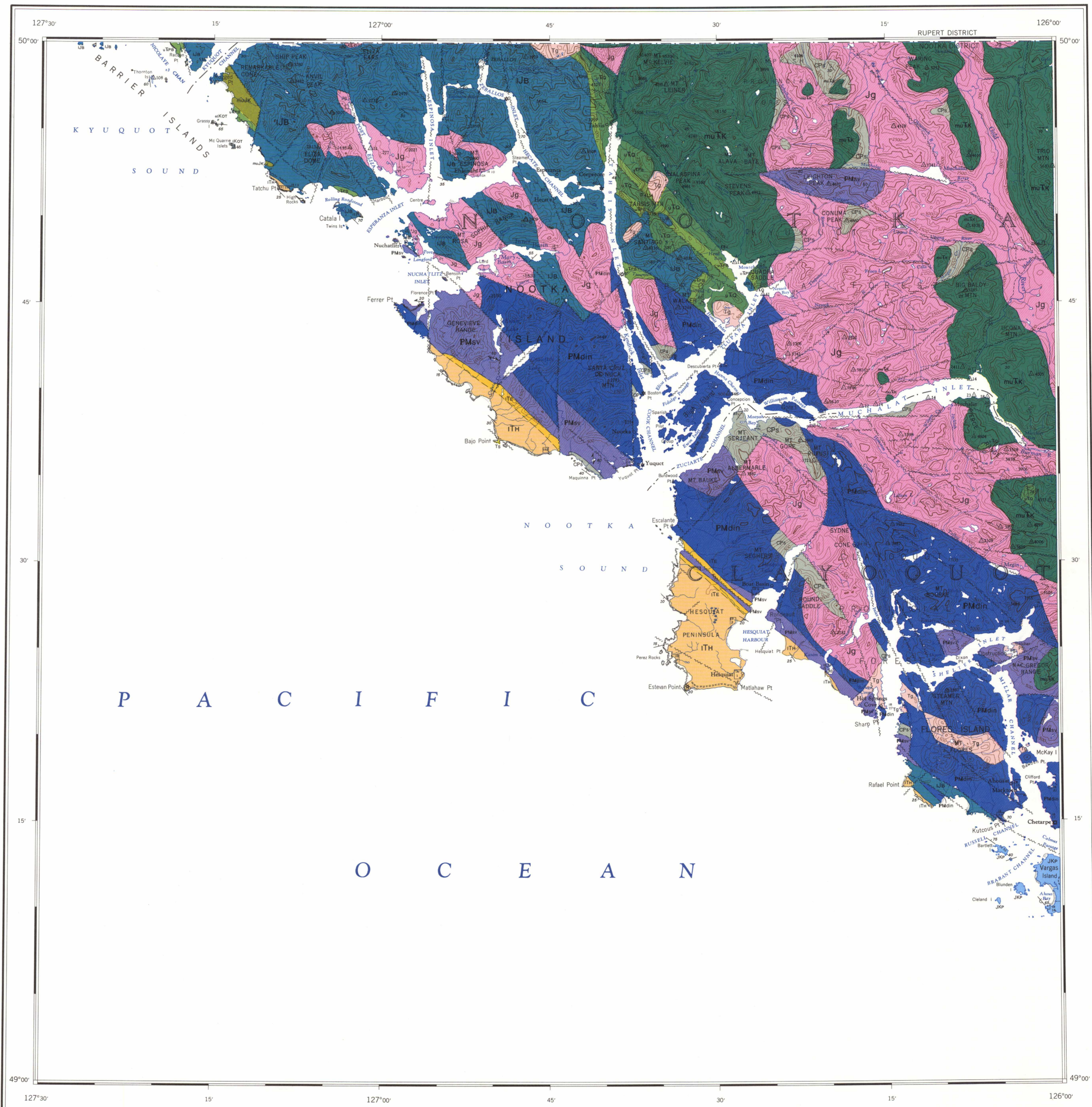
Any revisions or additional geological information known to the user
 would be welcomed by the Geological Survey of Canada

Base map at the same scale published by the Army Survey
 Establishment, R.C.E. 1952-54 from maps by the
 Surveys and Mapping Branch, Department of Lands
 and Forests, British Columbia

Copies of the topographical edition of this map may be obtained from the
 Canada Map Office, Department of Energy, Mines and Resources, Ottawa

Mean magnetic declination 1980, 22°34.8' East, decreasing 7.6'
 annually. Readings vary from 22°11.4' in the SE corner
 to 22°58.2' in the NW corner of the map area

Elevations in feet above mean sea level



Copies of this map may be obtained
 from the Geological Survey of Canada:
 601 Booth Street, Ottawa, Ontario K1A 0E8
 3303 - 33rd Street, N.W., Calgary, Alberta T2L 2A7
 100 West Pender Street, Vancouver, B.C. V6B 1R8

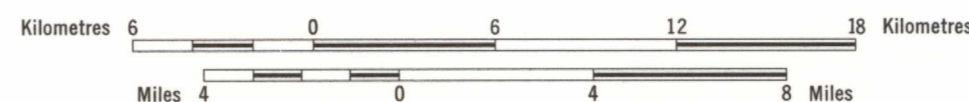


INDEX MAP

NOT TO BE TAKEN FROM LIBRARY
 NE PAS SORTIR DE LA BIBLIOTHÈQUE

MAP 1537A
 GEOLOGY
NOOTKA SOUND
 BRITISH COLUMBIA

Scale 1:250 000



Universal Transverse Mercator Projection
 © Crown Copyrights reserved

Library / Bibliothèque
 Geological Survey of Canada
 Commission Géologique du Canada
 Ottawa, Canada K1A 0E8

102-I	92L	92K
	4-1974	
	92E	92F
	1537A	17-1968
		92C

NATIONAL TOPOGRAPHIC SYSTEM REFERENCE AND
 INDEX TO GEOLOGICAL SURVEY OF CANADA MAPS



MAP 1537A
NOOTKA SOUND
 BRITISH COLUMBIA

1537A