

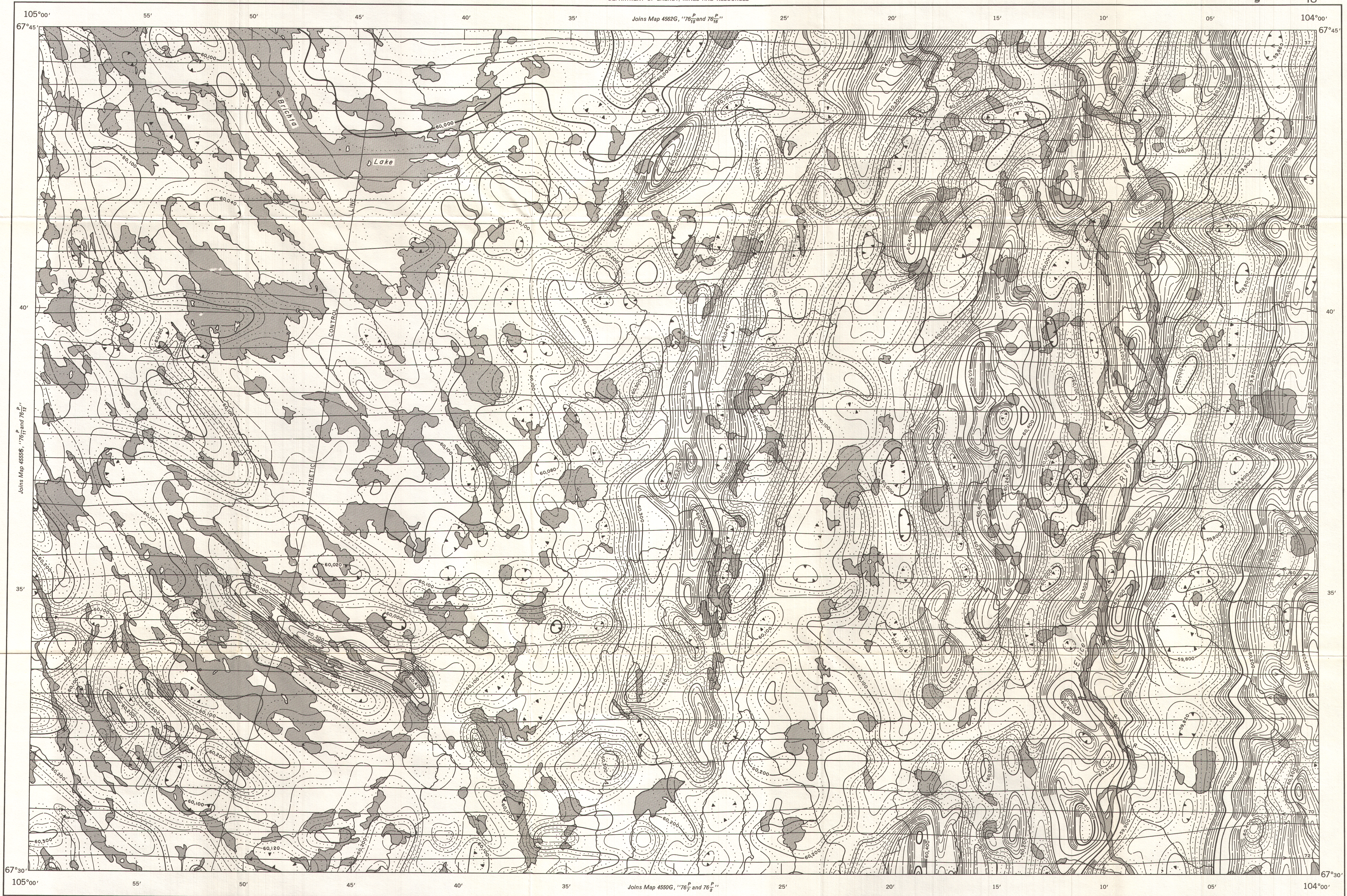
GEOLOGICAL SURVEY OF CANADA
DEPARTMENT OF ENERGY, MINES AND RESOURCES

AEROMAGNETIC SERIES

SHEET 76^P₉ AND 76^P₁₀

Joins Map 4562G, "76^P₁₂ and 76^P₁₁"

Joins Map 4550G, "76^P₇ and 76^P₈"

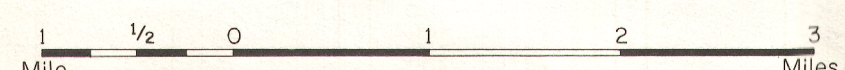


MAP 4556G

SHEET 76^P₉ AND 76^P₁₀

DISTRICT OF MACKENZIE
NORTHWEST TERRITORIES

Scale: One Inch = $\frac{1}{63,360}$ Miles



COPIES OF THIS MAP MAY BE OBTAINED FROM THE DIRECTOR, GEOLOGICAL SURVEY OF CANADA, OTTAWA.

Airborne Magnetic Survey, Aug. 1967 to Aug. 1968, by Spartan Air Services Ltd.

No correction has been made for regional variation.

The planimetry for this map was obtained from topographical map sheets published by the Department of Energy, Mines and Resources, Ottawa.

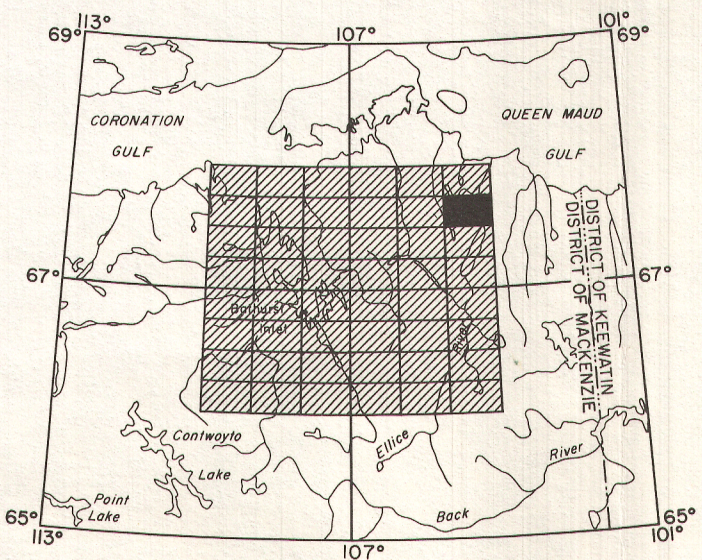
The magnetic data on this map were compiled from information recorded along the flight lines shown. The anomalies expressed by the magnetic contours are dependent on the variable magnetic intensities of the underlying rocks, and may be due to conditions near, or at unknown depths below the surface. High magnetic anomalies normally indicate the presence of basic rocks, such as diabase, gabbro, or serpentinite, which have a relatively high iron content, but in special instances may be due, or partly due, to concentrations of magnetic minerals. By means of the magnetic anomalies, various rock bodies or structural features, such as faults or folds, may be traced into, or across, areas of low or no outcrops. In many instances, however, no interpretation of particular anomalies may be possible without further geological information.

GEOPHYSICS PAPER 4556

NORTHWEST TERRITORIES

SHEET 76^P₉ AND 76^P₁₀

PUBLISHED 1968



INDEX MAP