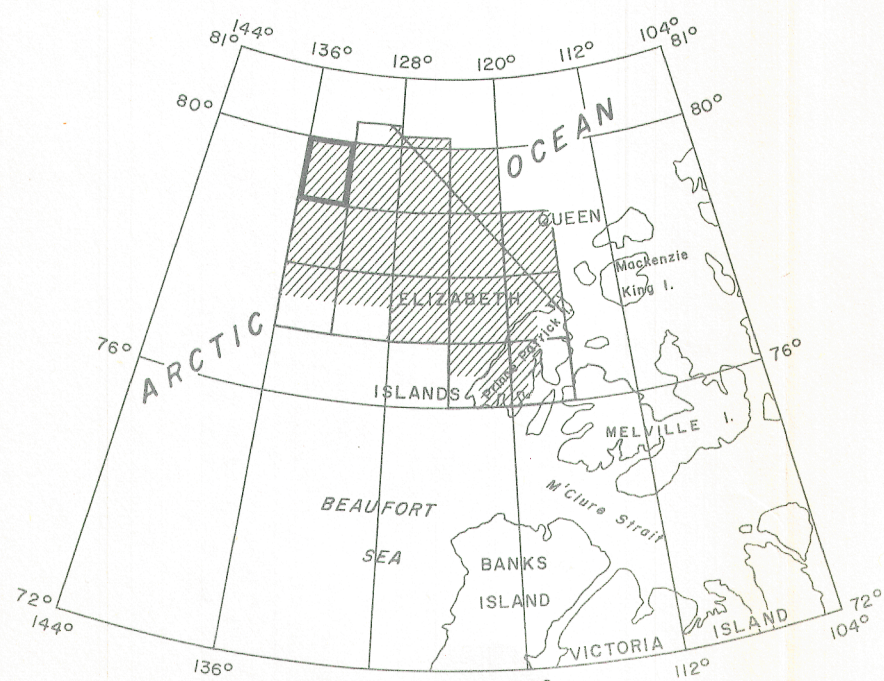
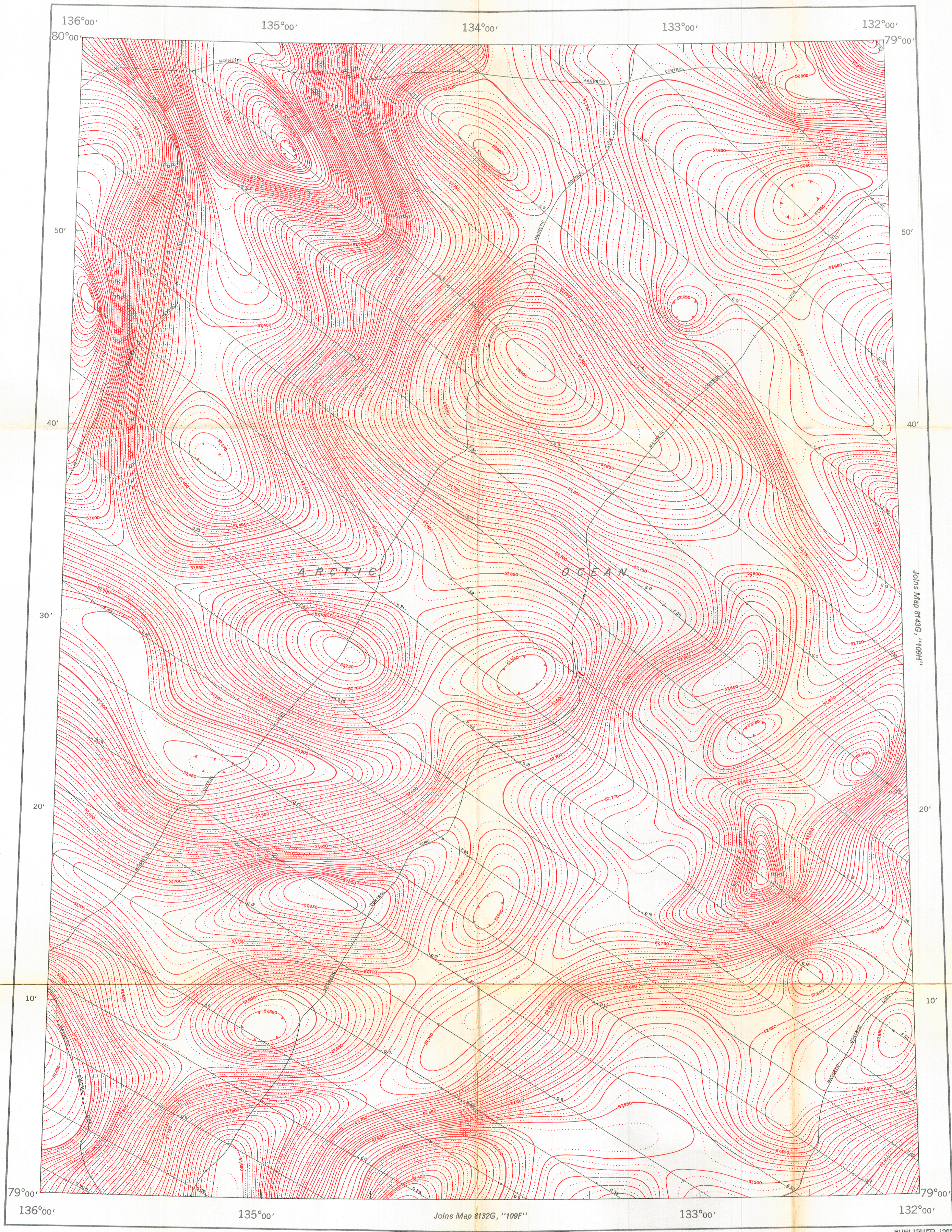


AEROMAGNETIC SERIES

GEOLOGICAL SURVEY OF CANADA
DEPARTMENT OF ENERGY, MINES AND RESOURCES

SHEET 109G



INDEX MAP

MAP 8144 G

POLAR CONTINENTAL SHELF SHEET 109G

DISTRICT OF FRANKLIN
NORTHWEST TERRITORIES

Scale: One Inch to Four Miles = $\frac{1}{253,440}$



COPIES OF THIS MAP MAY BE OBTAINED FROM THE
DIRECTOR, GEOLOGICAL SURVEY OF CANADA, OTTAWA.

ISOMAGNETIC LINES

500 gammas
100 gammas
50 gammas
10 gammas
5 gammas
Magnetic Depression
Flight Line

Flight altitude: 1000 feet above sea-level.
No correction has been made for regional variation.
Airborne Magnetic Survey, May 1966 to May 1967
by Spartan Air Services Ltd., Ottawa.

Decca navigation was used in order to direct the course of the aircraft and to determine its track for accurate navigation. The Decca lanes as shown on this map are the theoretical positions of the Decca lattice for the Cape Andreasen Decca Chain 1965-66 and indicate the approximate track of the survey aircraft. The position of the magnetic control lines, as established from recorded Decca fixes, indicate the actual track of the survey aircraft. For details, see Cape Andreasen Decca Chain, 1965-66, Computing Devices of Canada Ltd., Ottawa. Lambert Conformal Projection—standard parallels 76°46'30" and 79°49'30".

GEOPHYSICS PAPER 8144
POLAR CONTINENTAL SHELF
NORTHWEST TERRITORIES
SHEET 109G