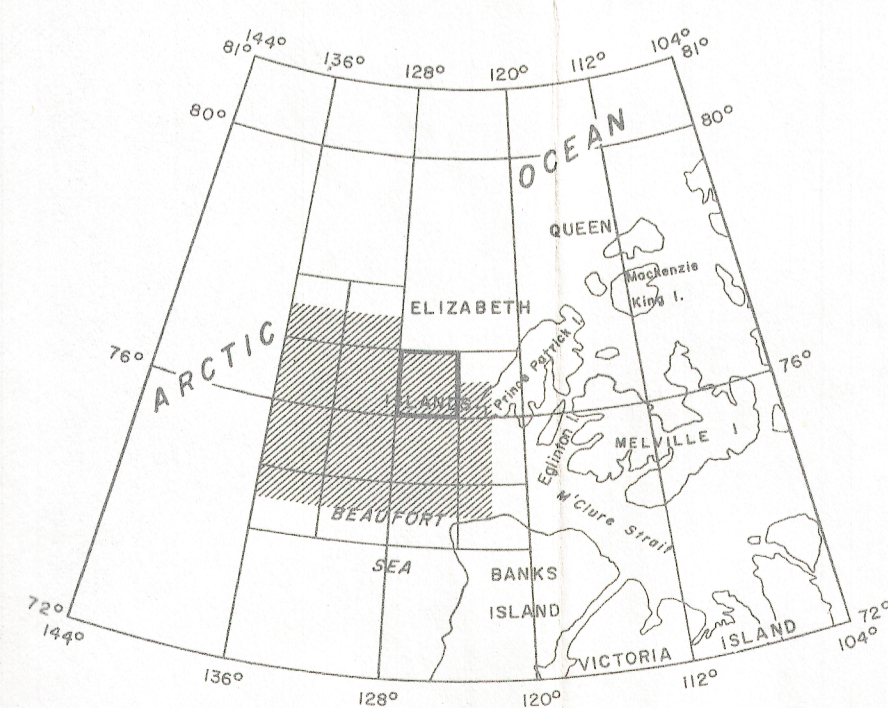


PUBLISHED 1969



INDEX MAP

MAP 8107G
POLAR CONTINENTAL SHELF
SHEET 99B
DISTRICT OF FRANKLIN
NORTHWEST TERRITORIES

Scale: One Inch to Four Miles = $\frac{1}{253,440}$
4 2 0 4 8 12
MILES MILES
COPIES OF THIS MAP MAY BE OBTAINED FROM THE DIRECTOR, GEOLOGICAL SURVEY OF CANADA, OTTAWA.

- ISOMAGNETIC LINES (absolute total field)
- 500 gammas
 - 100 gammas
 - 50 gammas
 - 10 gammas
 - 5 gammas
 - Magnetic Depression
 - Flight Line

Flight altitude: 1000 feet above sea-level.
No correction has been made for regional variation.
Airborne Magnetic Survey, flown April 1968
by Survoir Ltd., Ottawa.

Decca navigation (Eglington Island Decca Chain, 1968) was used to direct the course of the aircraft and to determine its track. Details available from Polar Continental Shelf Project, Department of Energy, Mines and Resources, Ottawa.
Lambert Conformal Projection—standard parallels 74°02'30" and 77°12'30".