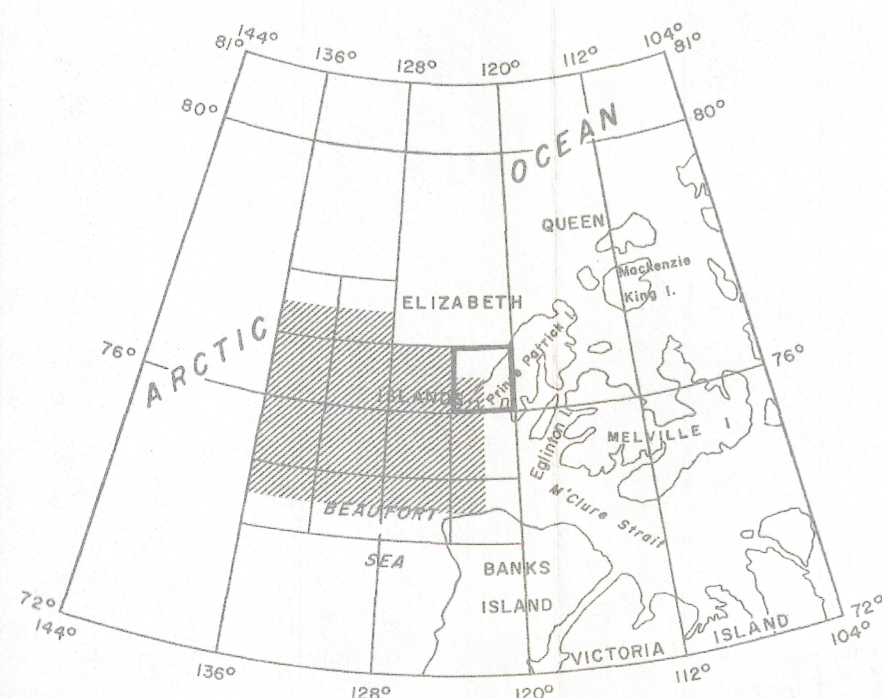


(EGLINTON ISLAND DECCA CHAIN) SURVAIR, 1968

8089G "DYER BAY"

(CAPE ANDREASEN DECCA CHAIN) SPARTAN, 1966-1967

PUBLISHED 1969



INDEX MAP

MAP 8106G (Second Edition)

POLAR CONTINENTAL SHELF HARDINGE BAY

DISTRICT OF FRANKLIN
NORTHWEST TERRITORIES

Bathymetric contours in metres
below sea-level —100—

Scale: One Inch to Four Miles = $\frac{1}{253,440}$



COPIES OF THIS MAP MAY BE OBTAINED FROM THE
DIRECTOR, GEOLOGICAL SURVEY OF CANADA, OTTAWA.

ISOMAGNETIC LINES (absolute total field)

- 500 gammas
- 100 gammas
- 50 gammas
- 10 gammas
- 5 gammas
- Magnetic Depression
- Flight Line

Flight altitude: 1000 feet above sea-level.
No correction has been made for regional variation.
Airborne Magnetic Survey, flown April 1968
by Survair Ltd, Ottawa.

Decca navigation (Eglinton Island Decca Chain, 1968) was used to direct
the course of the aircraft and to determine its track. Details available
from Polar Continental Shelf Project, Department of Energy, Mines and
Resources, Ottawa.
Lambert Conformal Projection—standard parallels 74°02'30" and 77°12'30"

GEOPHYSICS PAPER 8106

HARDINGE BAY

POLAR CONTINENTAL SHELF
NORTHWEST TERRITORIES

SHEET 99A