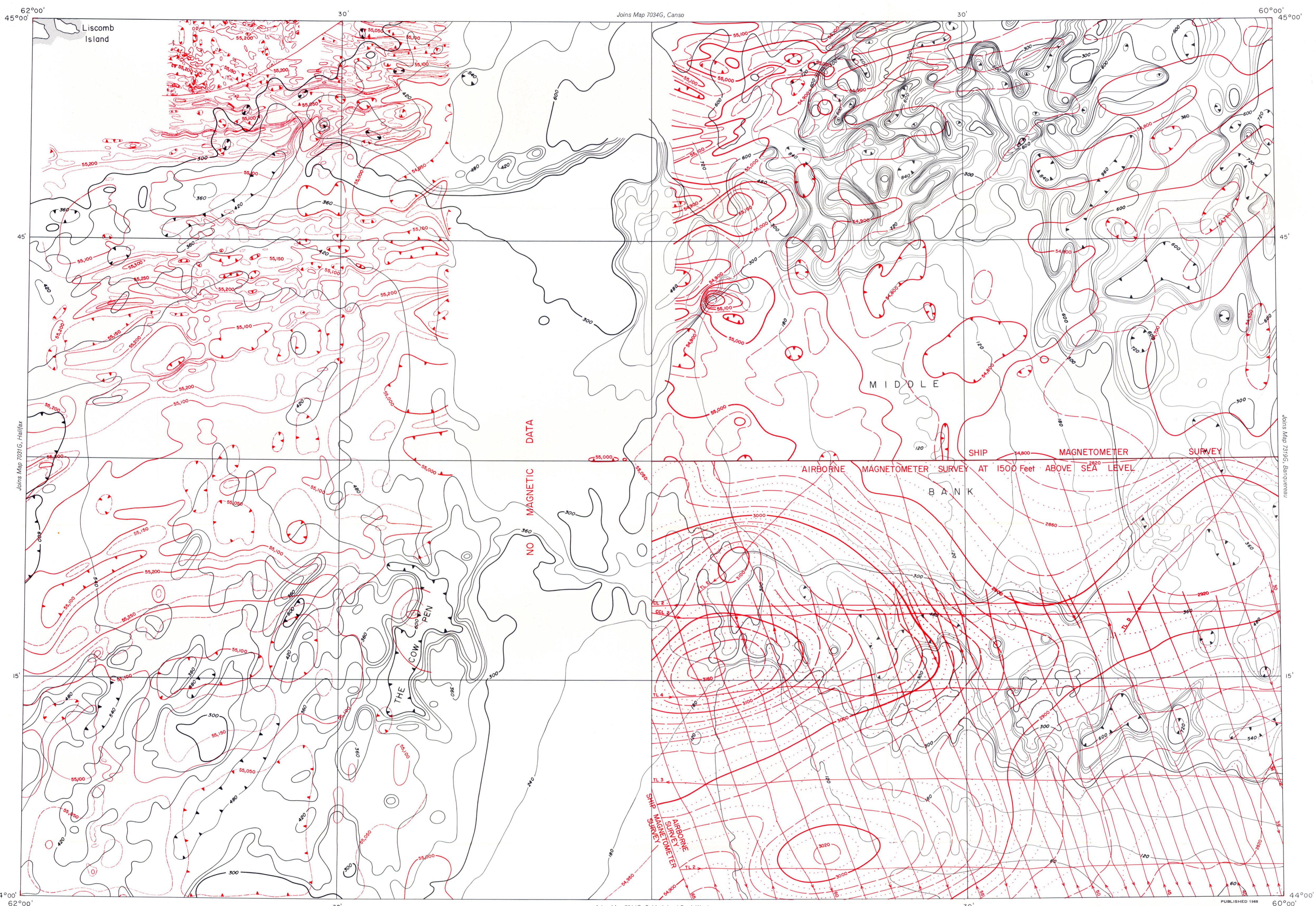
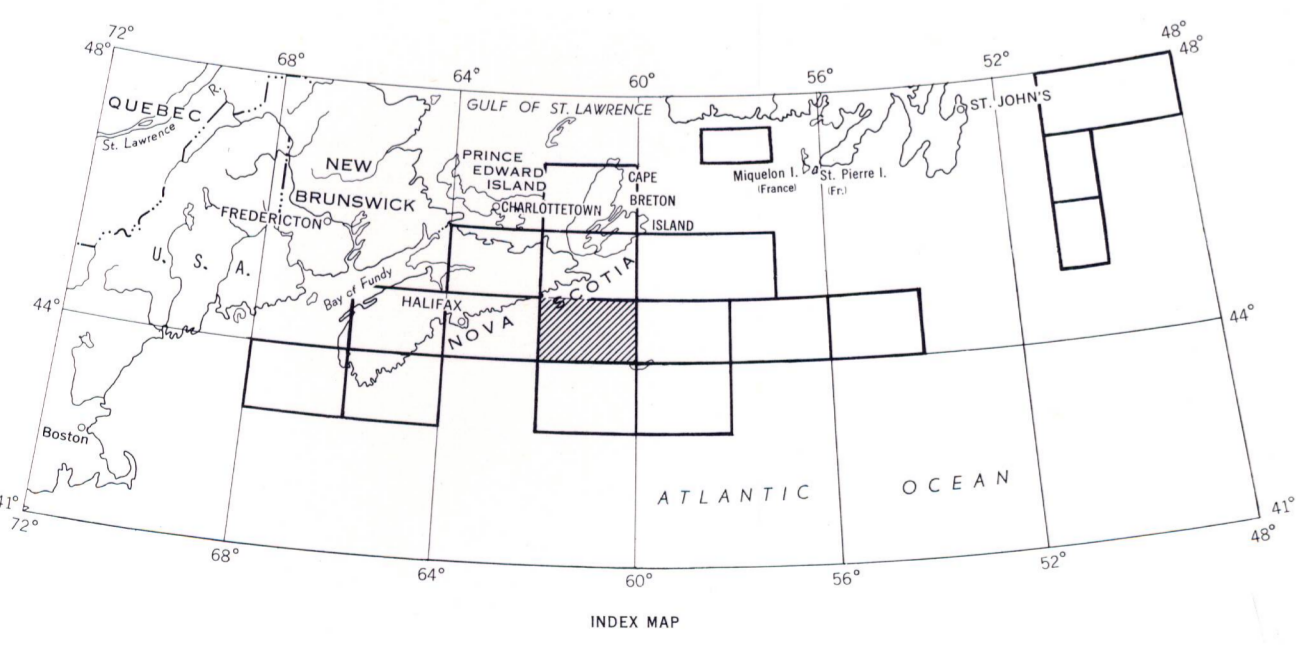




Joins Map 7034G, Canso



Joins Map 7314G, Sable Island Bank West



West Half
The ship magnetometer survey was conducted between May and June 1963 using a Two Range Decca Survey system as a navigational aid and between May and October 1961 using Newfoundland Decca Chain 6 as a navigational aid. No correction has been made for regional variation.
The bathymetric contours were compiled by Lockwood Survey Corporation Ltd from advance information supplied by the Canadian Hydrographic Service.
Drafting by Lockwood Survey Corporation Ltd.

MAP 7320 G
MIDDLE BANK
SCOTIAN SHELF
Scale: One Inch to Four Miles = $\frac{1}{253,440}$ Miles
4 2 0 2 4 8 12

East Half
The aeromagnetic survey was carried out between August and November 1959 by Canadian Aero Service Ltd. for Mobil Oil at a flight altitude of 1500 feet above sea level using Nova Scotia Decca Chain 7 as a navigational aid. The original compilation was carried out by personnel of Canadian Aero Service Ltd. The contours were re-drafted to conform to the Geological Survey of Canada format. A correction has been made for regional variation.
The ship magnetometer survey was conducted between May and October 1961 using Newfoundland Decca Chain 6 as a navigational aid. No correction has been made for regional variation.
The bathymetric contours for part of 11C were obtained from Fisheries Chart 4040, published by the Canadian Hydrographic Service, Marine Sciences Branch.
The bathymetric contours for a portion of 11C were compiled by Lockwood Survey Corporation Ltd from advance information supplied by the Canadian Hydrographic Service.
Bathymetric contours in feet below sea level. 200
Drafting by Lockwood Survey Corporation Ltd.

This document was produced by scanning the original publication.
Ce document est le produit d'une numérisation par balayage de la publication originale.