



GEOLOGICAL SURVEY OF CANADA  
DEPARTMENT OF MINES AND TECHNICAL SURVEYS

AEROMAGNETIC SERIES

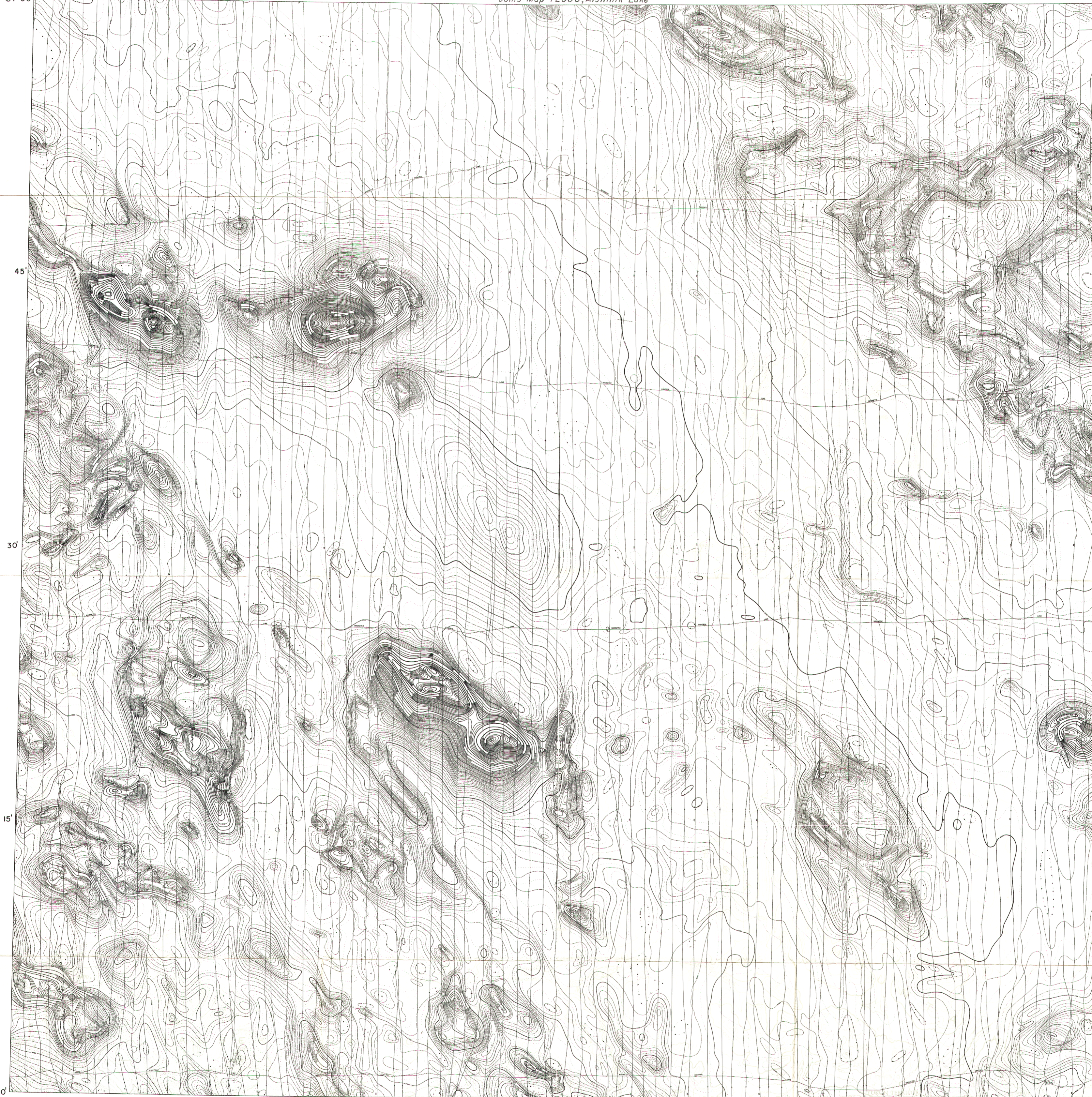
SHEET 115 A

138°00' 30' 30' 136°00' 61°00' 61°00'

Joins Map 7208 G, "Aishihik Lake"

30'

61°00'



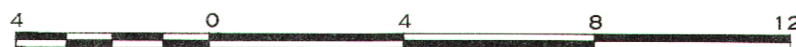
Joins Map 7003 G, "Whitehorse"

60°00' 138°00' 30' 137°00' 30' 136°00' 60°00'

MAP 7207G

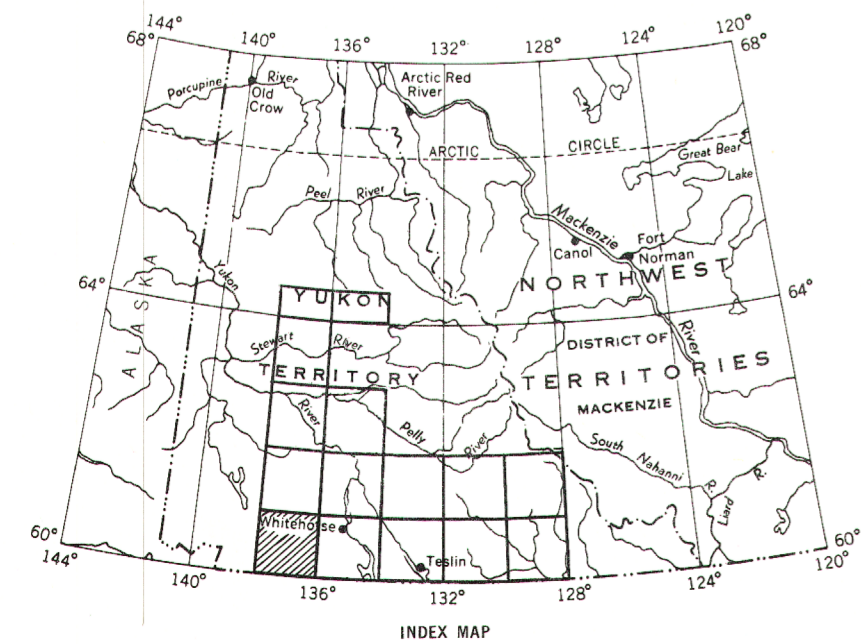
# DEZADEASH YUKON TERRITORY

Scale: One Inch to Four Miles =  $\frac{1}{253,440}$   
Miles



Airborne magnetic survey, June 1964 to February 1966 by  
Canadian Aero Service Limited, Ottawa; four mile map compiled  
from one inch to one mile geophysical maps published by the  
Department of Mines and Technical Surveys.

GEOPHYSICS PAPER 7207  
DEZADEASH  
YUKON TERRITORY  
SHEET 115 A



INDEX MAP