



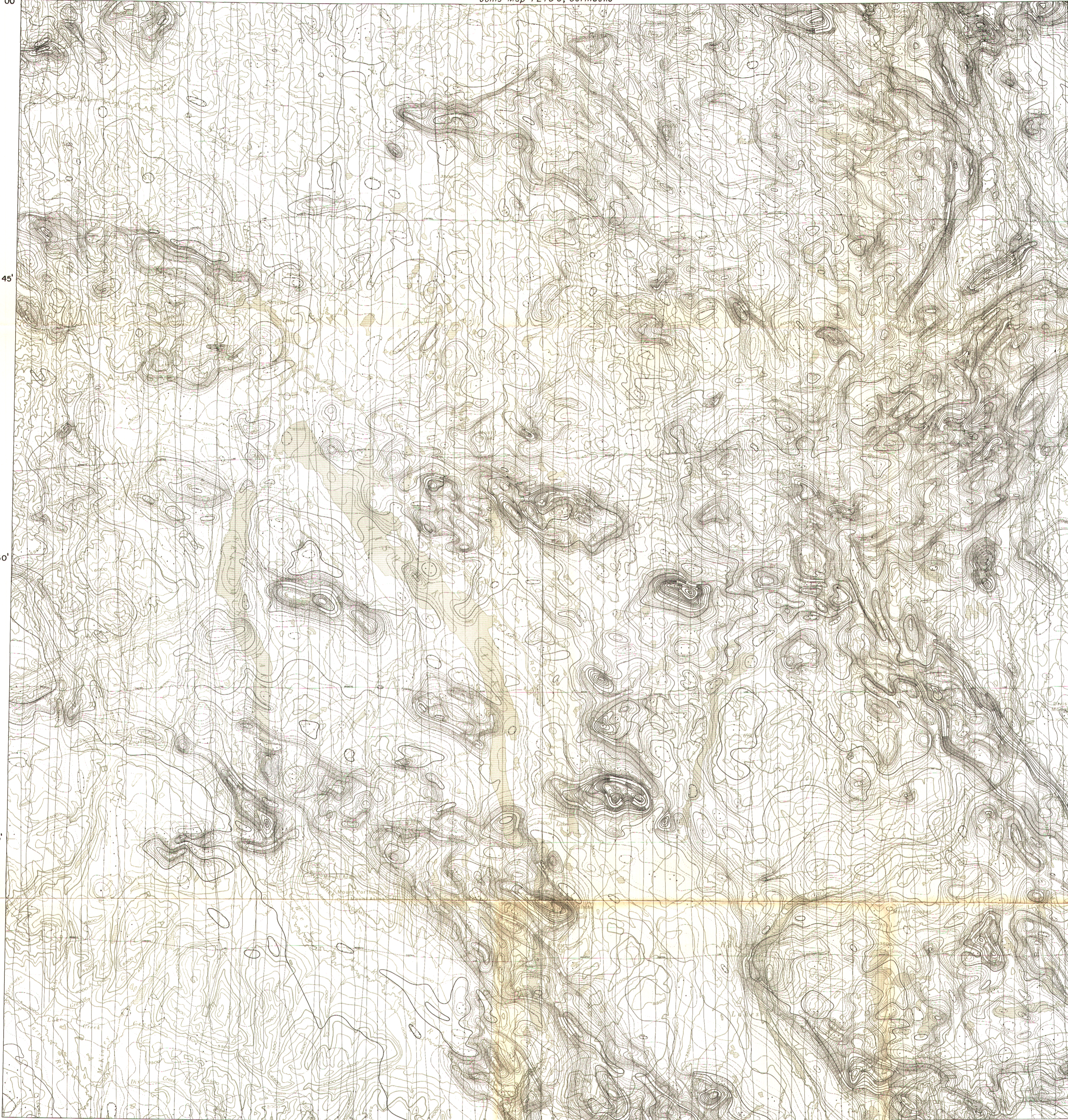
GEOLOGICAL SURVEY OF CANADA
DEPARTMENT OF MINES AND TECHNICAL SURVEYS

AEROMAGNETIC SERIES

SHEET 115 H

138°00' 30' 30' 136°00' 62°00' 62°00'

Joins Map 7210 G, "Carmacks"



Joins Map 7004 G, "Laberge"

61°00' 138°00' 30' 30' 136°00' 61°00'

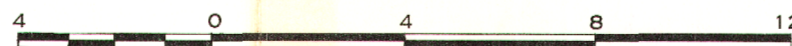
Joins Map 7207 G, "Dezadeash"

PUBLISHED 1966

MAP 7208G

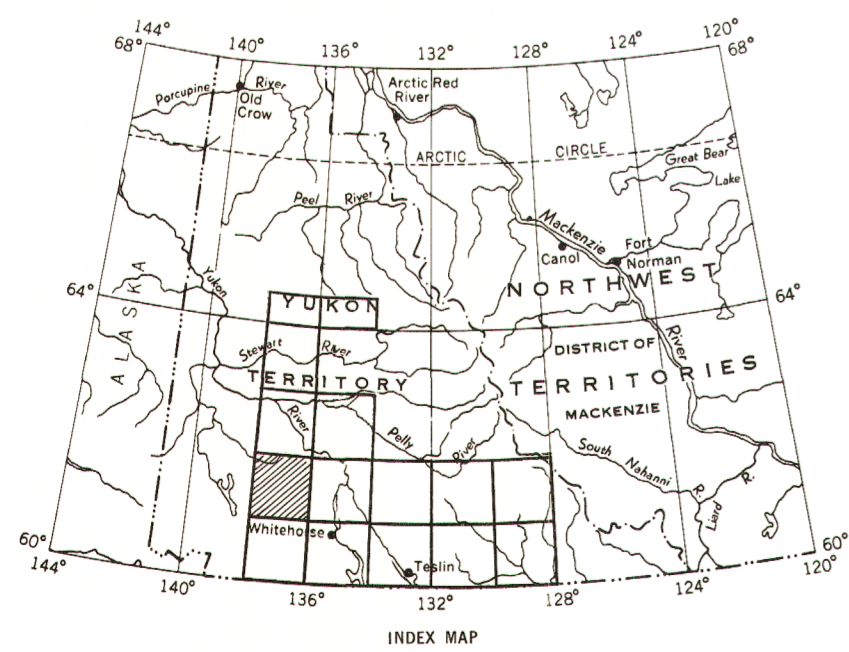
AISHIHIK LAKE YUKON TERRITORY

Scale: One Inch to Four Miles = $\frac{1}{253,440}$
Miles



Airborne magnetic survey, June 1964 to February 1966 by Canadian Aero Service Limited, Ottawa; four mile map compiled from one inch to one mile geophysical maps published by the Department of Mines and Technical Surveys.

GEOPHYSICS PAPER 7208
AISHIHIK LAKE
YUKON TERRITORY
SHEET 115 H



INDEX MAP