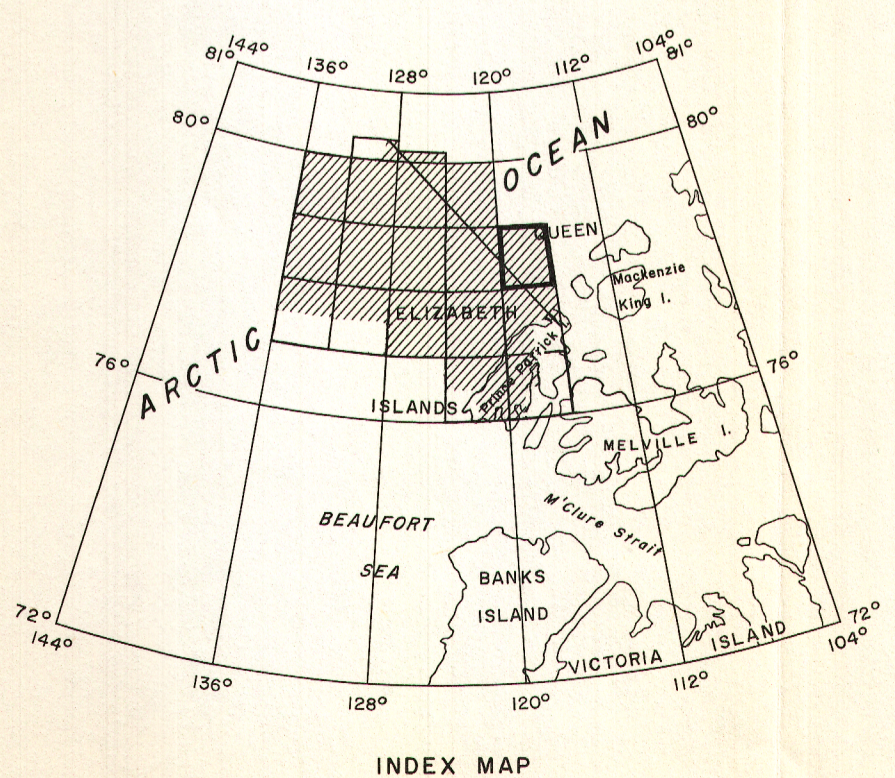


PUBLISHED 1968



INDEX MAP

MAP 7255 G

### POLAR CONTINENTAL SHELF SHEET 89F

DISTRICT OF FRANKLIN  
NORTHWEST TERRITORIES

Scale: One Inch to Four Miles =  $\frac{1}{253,440}$



COPIES OF THIS MAP MAY BE OBTAINED FROM THE  
DIRECTOR, GEOLOGICAL SURVEY OF CANADA, OTTAWA.

The area northeast of Decca lane F 12 has been surveyed by Canadian Aero Service Ltd. in 1964.

#### ISOMAGNETIC LINES

- 500 gammas .....
- 100 gammas .....
- 50 gammas .....
- 10 gammas .....
- 5 gammas .....
- Magnetic Depression .....
- Flight line .....

Flight altitude: 1000 feet above sea-level.  
No correction has been made for regional variation.  
Airborne Magnetic Survey, May 1966 to May 1967  
by Spartan Air Services Ltd., Ottawa.

Decca navigation was used in order to direct the course of the aircraft and to determine its track for accurate navigation. The Decca lanes as shown on this map are the theoretical positions of the Decca lattice for the Cape Andresen Decca Chain 1965-66 and indicate the approximate track of the survey aircraft. The position of the magnetic control lines, as established from recorded Decca fixes, indicate the actual track of the survey aircraft. For details, see Cape Andresen Decca Chain, 1965-66, Computing Devices of Canada Ltd., Ottawa. Lambert Conformal Projection—standard parallels 76°46'30" and 79°49'30".

GEOPHYSICS PAPER 7255  
**POLAR CONTINENTAL SHELF**  
NORTHWEST TERRITORIES  
SHEET 89F