

250,000
7018 G 1:250,000

AEROMAGNETIC SERIES

SHEET 74 J

108°00'

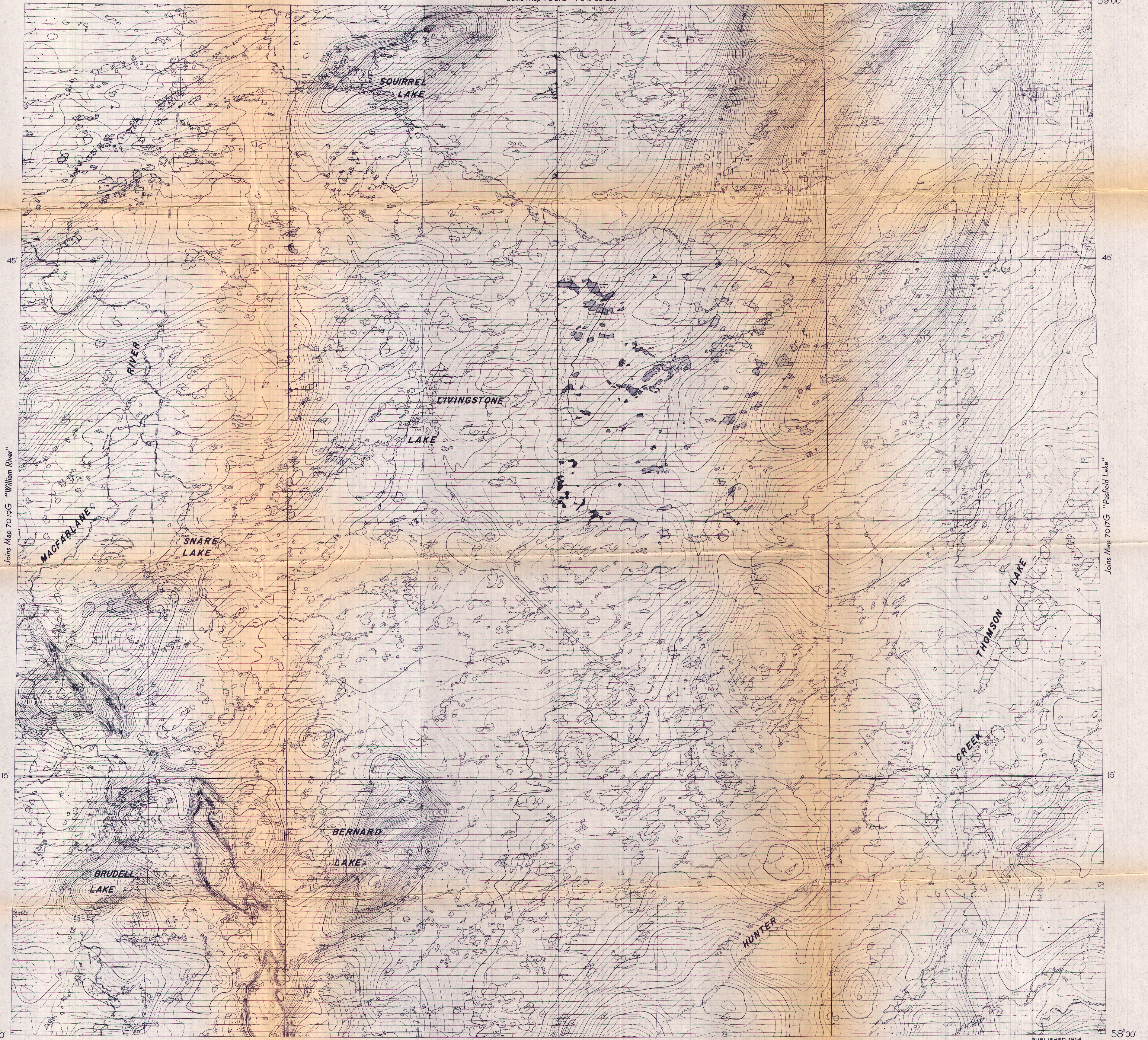
30'

Joins Map 7021G "Fond du Lac"

30'

106°00'

59°00'



Joins Map 7019G "William River"

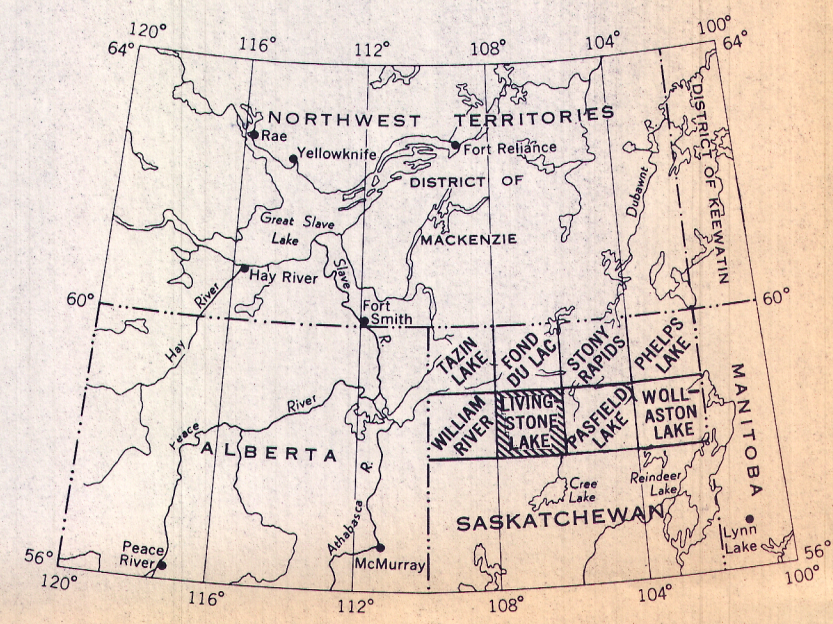
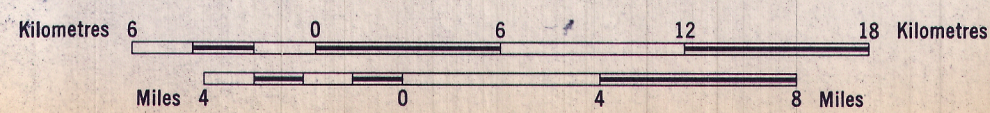
Joins Map 7017G "Pasfield Lake"

PUBLISHED, 1964

MAP 7018 G
LIVINGSTONE LAKE
SASKATCHEWAN

Airborne Magnetic Survey, June 1962 to September 1962 by Canadian Aero Service Ltd., four mile map compiled from one inch to one mile Geophysical maps published by the Department of Mines and Technical Surveys and the Province of Saskatchewan Department of Mineral Resources.
No correction has been made for regional variation

Scale 1:250,000



GEOPHYSICS PAPER 7018
LIVINGSTONE LAKE
SASKATCHEWAN
SHEET 74 J