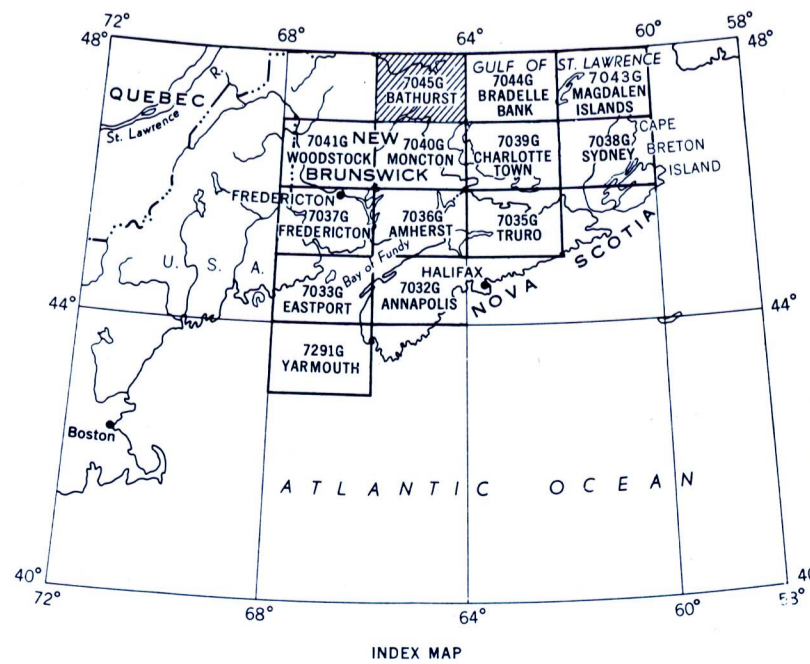


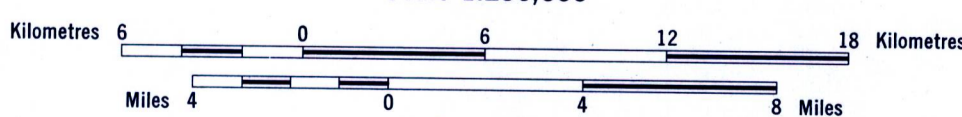
Joins Map 7044G, "Badelle Bank"



MAP 7045G

BATHURST NEW BRUNSWICK-PRINCE EDWARD ISLAND

Scale 1:250,000



Universal Transverse Mercator Projection
© Crown Copyrights reserved

Airborne Magnetic Survey, January to March 1950, and May to September 1958,
by the Geological Survey of Canada, Department of Mines and Technical Surveys.

No correction has been made for regional variation.

This document was produced
by scanning the original publication.
Ce document est le produit d'une
numérisation par balayage
de la publication originale.

GEOPHYSICS PAPER 7045
BATHURST
N.B.-P.E.I.
SHEET 21P

PUBLISHED, 1965