

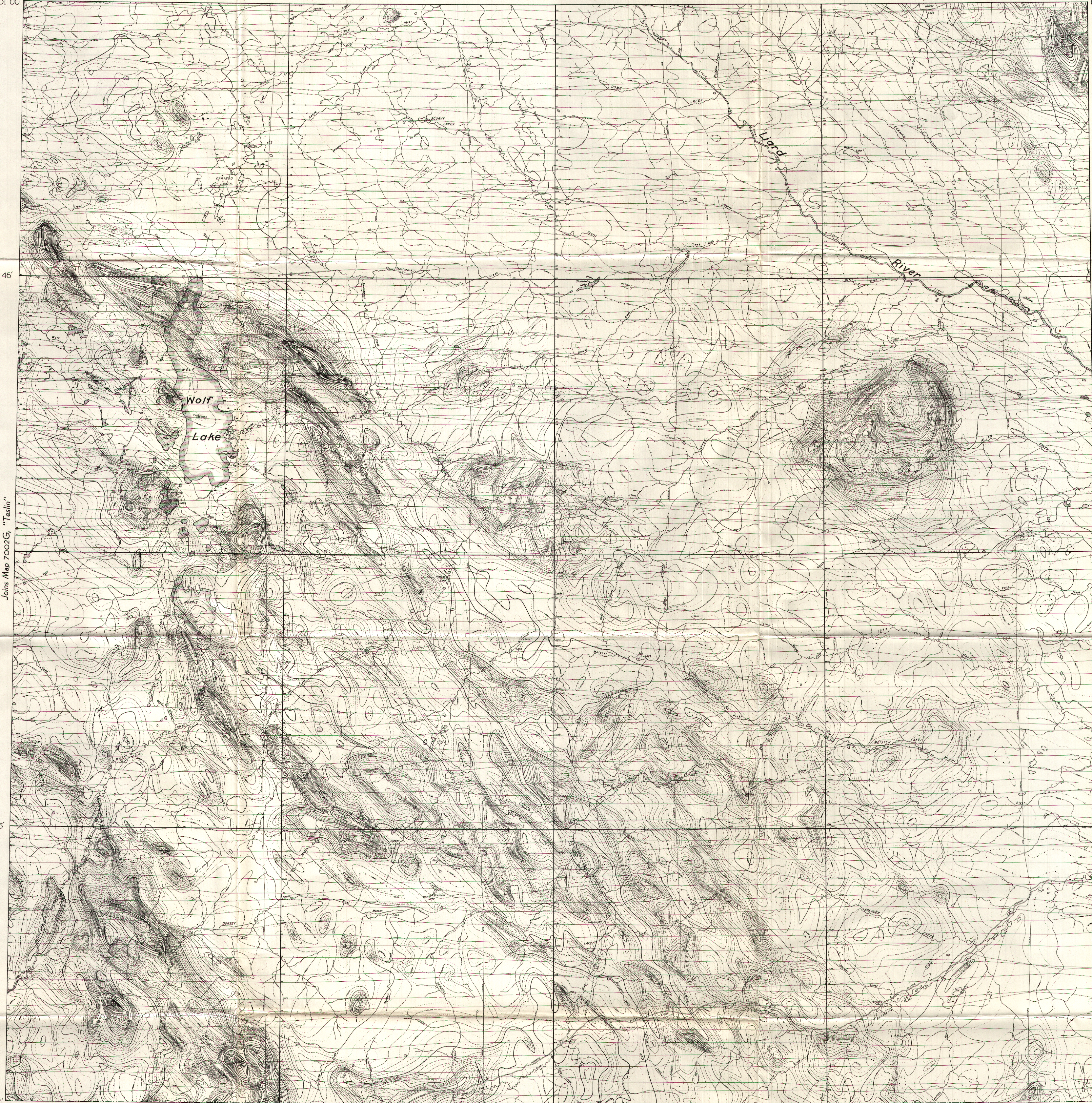
132° 00'
61° 00'

30'

Joins Map 7006G, "Finlayson Lake"

30'

130° 00'
61° 00'



Joins Map 7002G, "Teslin"

Joins Map 7000G, "Watson Lake"

15'

15'

60° 00'
132° 00'

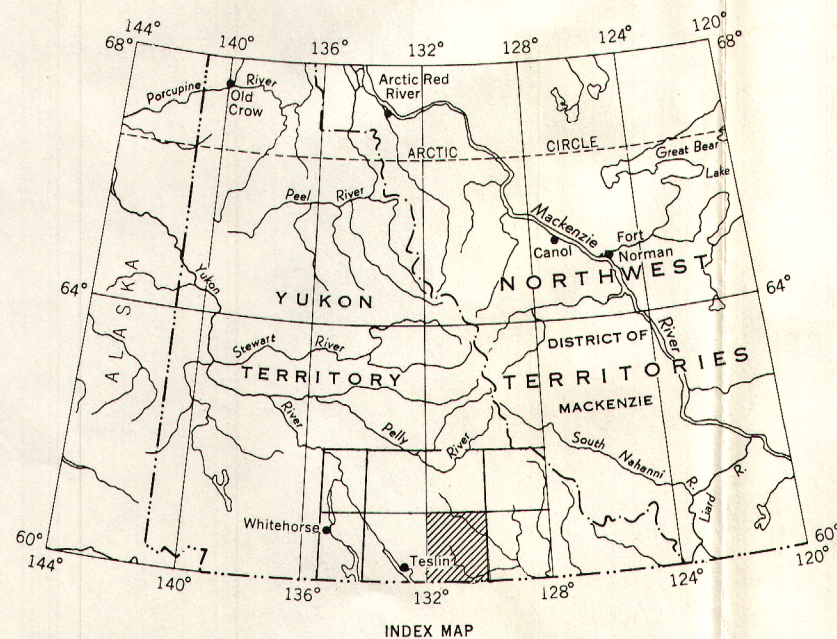
30'

131° 00'

30'

PUBLISHED, 1963

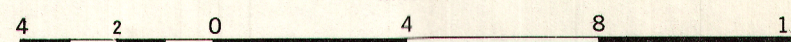
60° 00'
130° 00'



MAP 7001 G

WOLF LAKE YUKON TERRITORY

Scale: One Inch to Four Miles = $\frac{1}{253,440}$
Miles



Airborne magnetic survey, June to September, 1961, by Aero Surveys Ltd.
Vancouver; four mile map compiled from one inch to one mile geophysical maps
published by the Department of Mines and Technical Surveys
No correction has been made for regional variation

GEOPHYSICS PAPER 7001 G
WOLF LAKE
YUKON TERRITORY
SHEET 105 B