

92°00'
54°00'

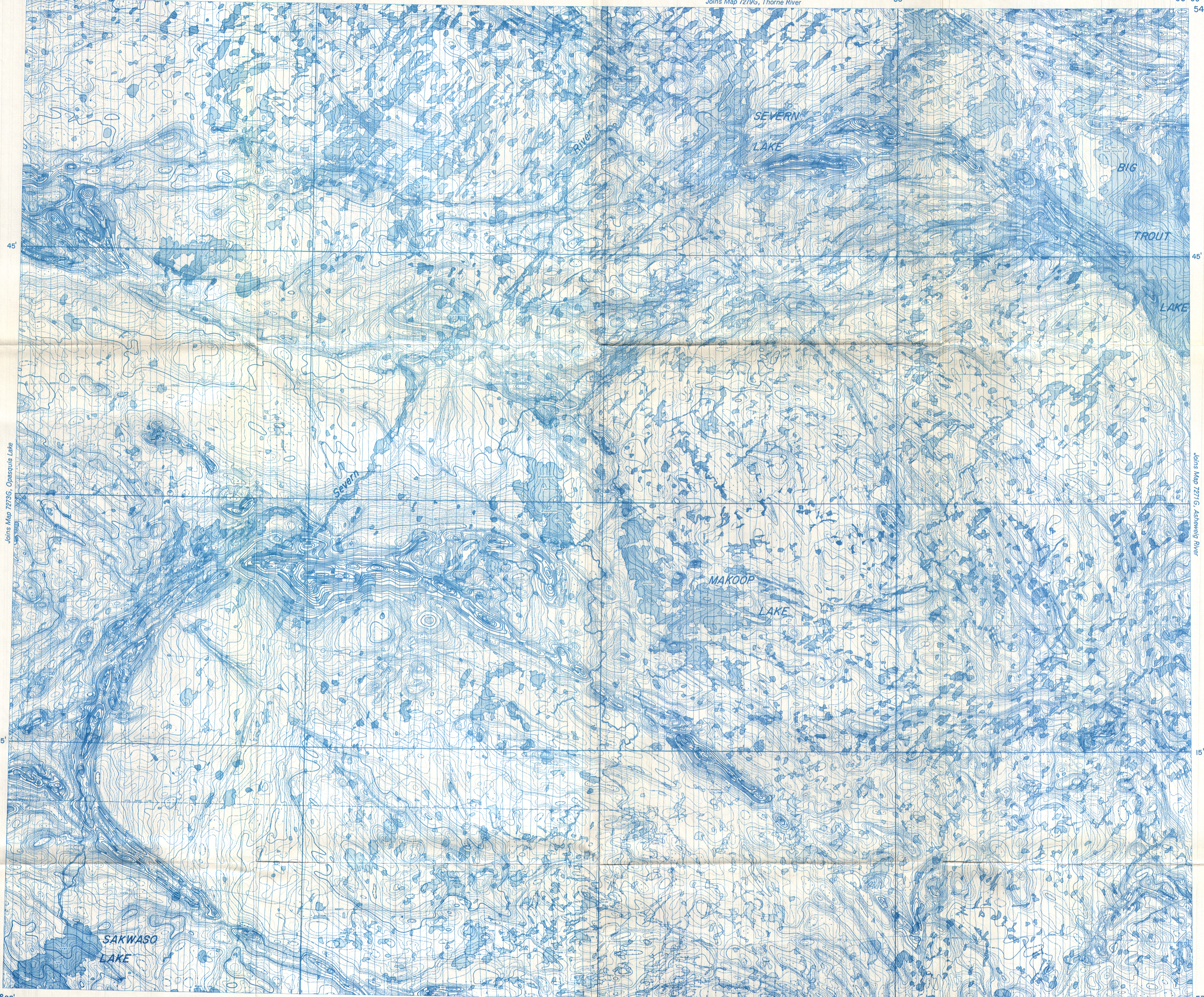
30'

91°00'

Joins Map 7279G, Thorne River

30'

90°00'
54°00'



Joins Map 7278G, Opasquia Lake

Joins Map 7271G, Ashmead River

53°00'
92°00'

30'

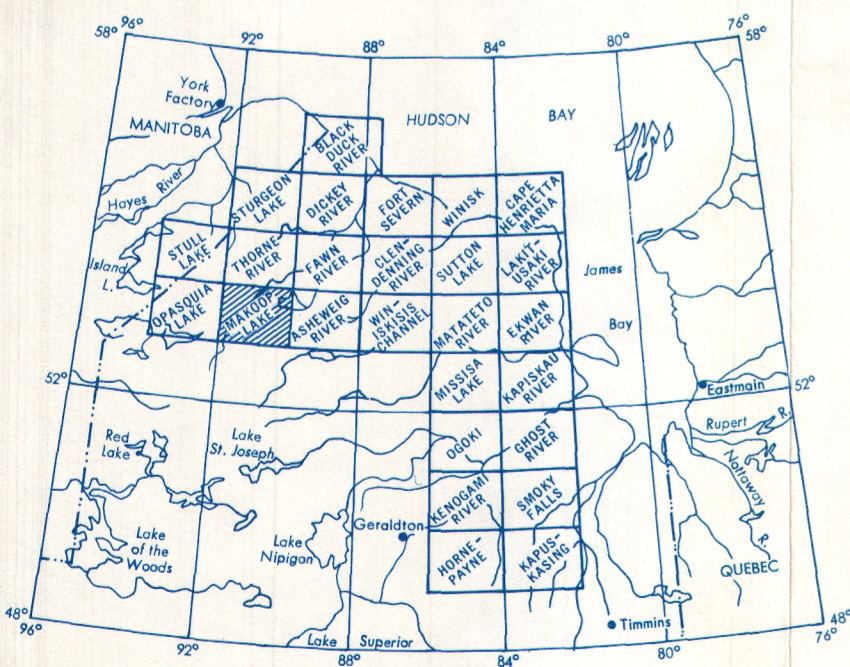
91°00'

Joins Map 7013G, North Caribou Lake

30'

PUBLISHED 1967

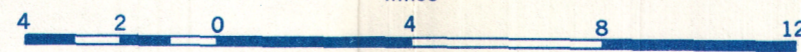
53°00'
90°00'



MAP 7272G

MAKOOP LAKE ONTARIO

Scale: One Inch to Four Miles = $\frac{1}{253,440}$
Miles



Airborne Magnetic Survey, February 1965 to January 1966 by Lockwood Survey Corporation Ltd.

Four mile map compiled from one inch to one mile geophysical maps published by The Department of Energy, Mines and Resources, Ottawa, and the Province of Ontario Department of Mines.

No correction has been made for regional variation.

GEOPHYSICS PAPER 7272G
MAKOOP LAKE
ONTARIO
SHEET 53G