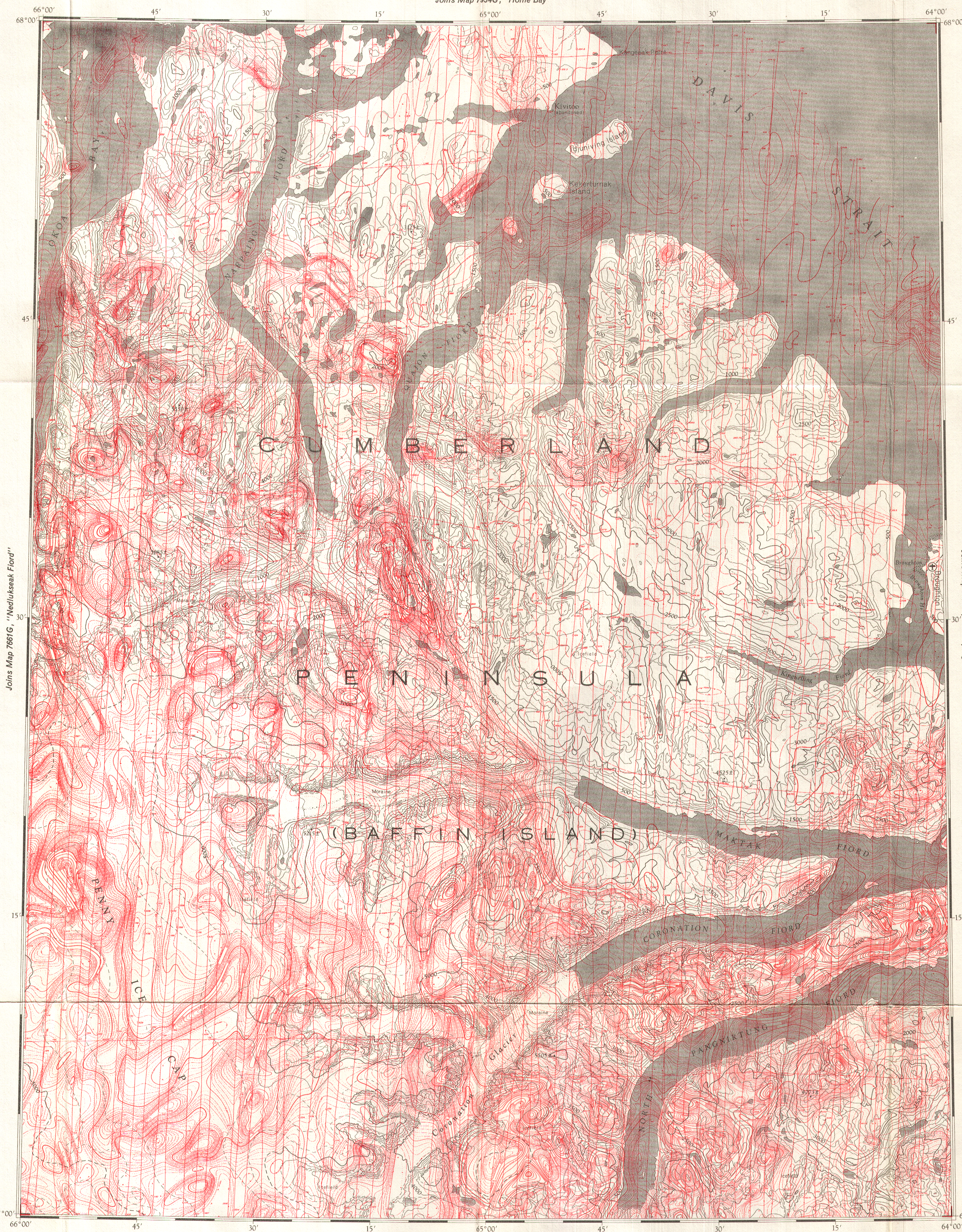


GEOPHYSICAL SERIES (AEROMAGNETIC)

GEOLOGICAL SURVEY OF CANADA
DEPARTMENT OF ENERGY, MINES AND RESOURCES

SHEET 26 P

Joins Map 7334G, "Home Bay"



Joins Map 7638G, "Pangvirtsu"

PUBLISHED 1972

MAP 7660G

OKOA BAY

BAFFIN ISLAND
DISTRICT OF FRANKLIN

Scale: One Inch to Four Miles = $\frac{1}{253,440}$

4 2 0 4 8 12
MILES MILES

Air photographs covering this map-area may be obtained through the National Air Photographic Library, Topographical Survey, Ottawa, Ontario.

COPIES OF THIS MAP MAY BE OBTAINED FROM THE DIRECTOR, GEOLOGICAL SURVEY OF CANADA, OTTAWA.

Airborne Magnetic Survey, April 1968 to Aug. 1971
by Spartan Aero Limited.

No correction has been made for regional variation.

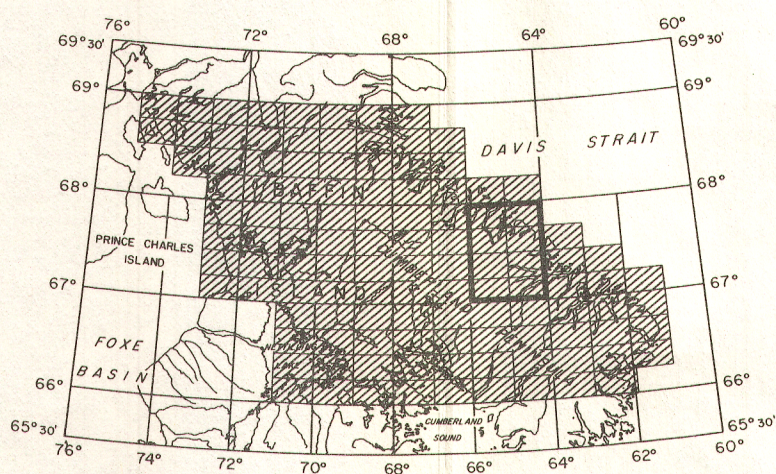
The topography for this map was reproduced from 1:250,000 topographical map sheets, published by the Department of Energy, Mines and Resources, Ottawa.

Doppler navigation was utilized to direct the course of the aircraft and the Doppler output was recorded on an incremental X, Y recorder for compilation purposes.

MAP 7660 G

OKOA BAY
BAFFIN ISLAND

SHEET 26 P



INDEX MAP