

100000000

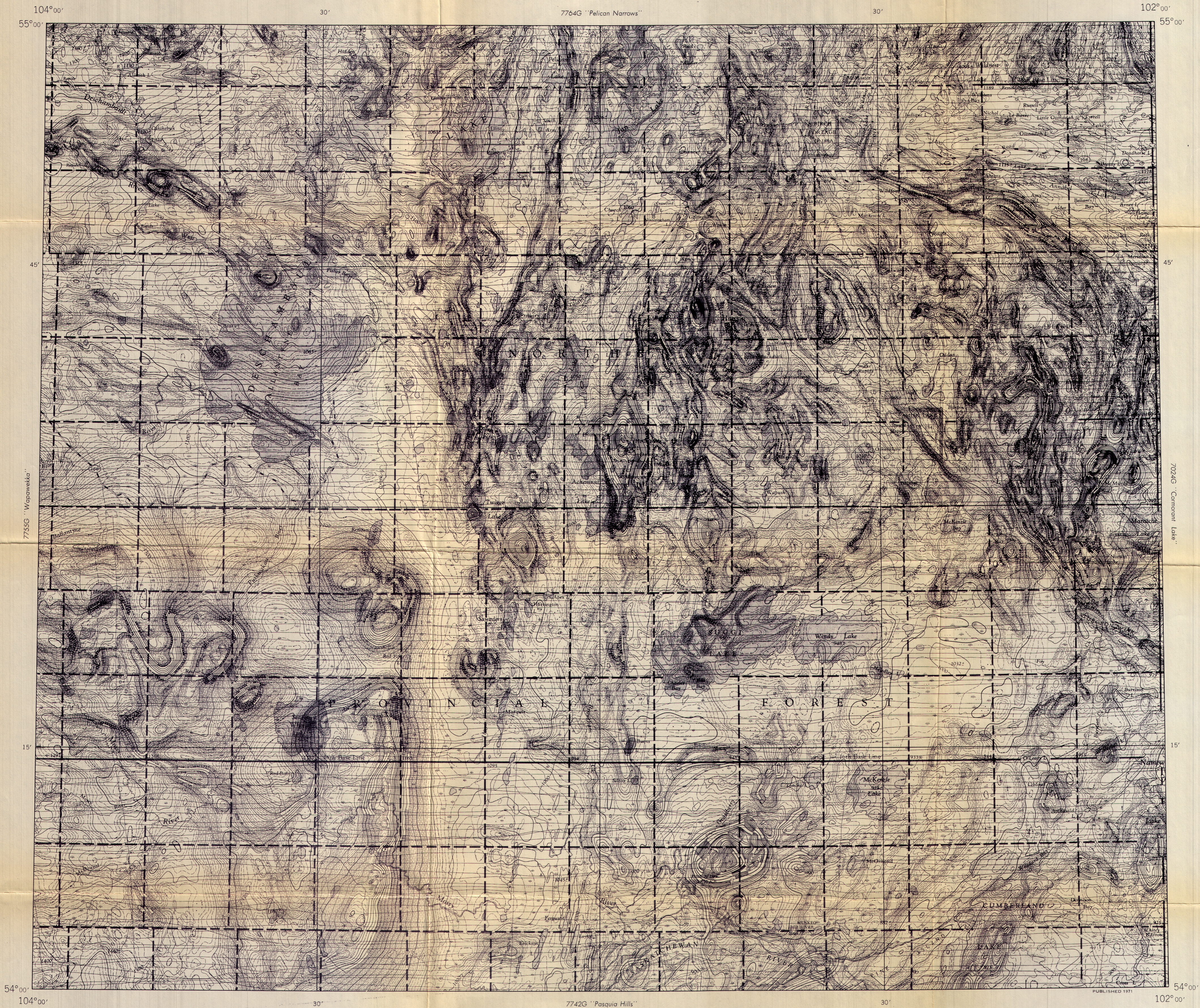
7750

AEROMAGNETIC SERIES

PROVINCE OF SASKATCHEWAN  
DEPARTMENT OF MINERAL RESOURCES

DEPARTMENT OF ENERGY, MINES AND RESOURCES  
GEOLOGICAL SURVEY OF CANADA

SHEET 63 L



7754 G

# AMISK LAKE SASKATCHEWAN

Scale 1:250 000

Kilometres 6 0 6 12 18 Kilometres

Universal Transverse Mercator Projection  
© Crown Copyrights reserved

Airborne Magnetic Survey, October 1966 to October 1969, by  
Aero Photo Inc, Quebec.  
No correction has been made for regional variation.

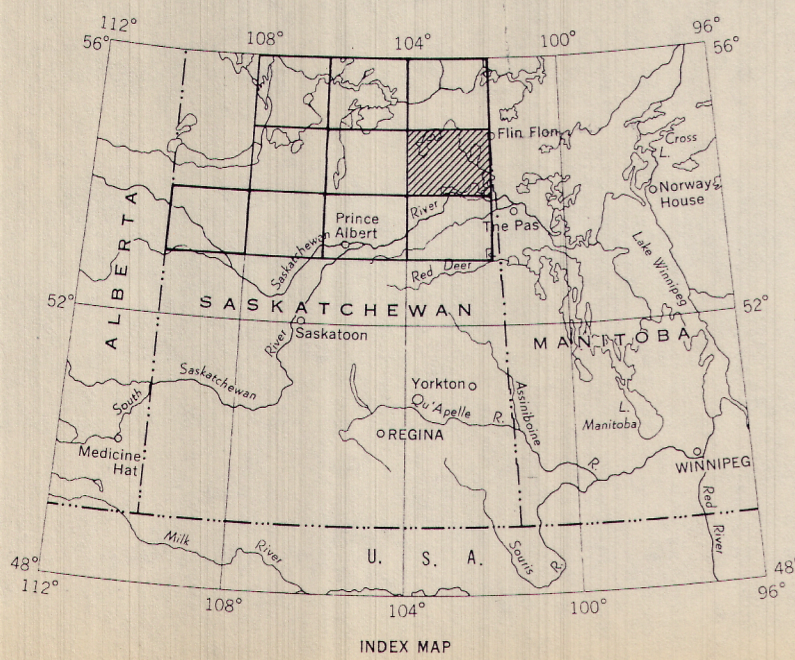
Base map was obtained from topographical sheets published by  
the Department of Energy, Mines and Resources.

GEOPHYSICS PAPER 7754

AMISK LAKE

SASKATCHEWAN

SHEET 63 L



INDEX MAP

Flight altitude: nominally 1000 feet above  
ground level where terrain permitted.