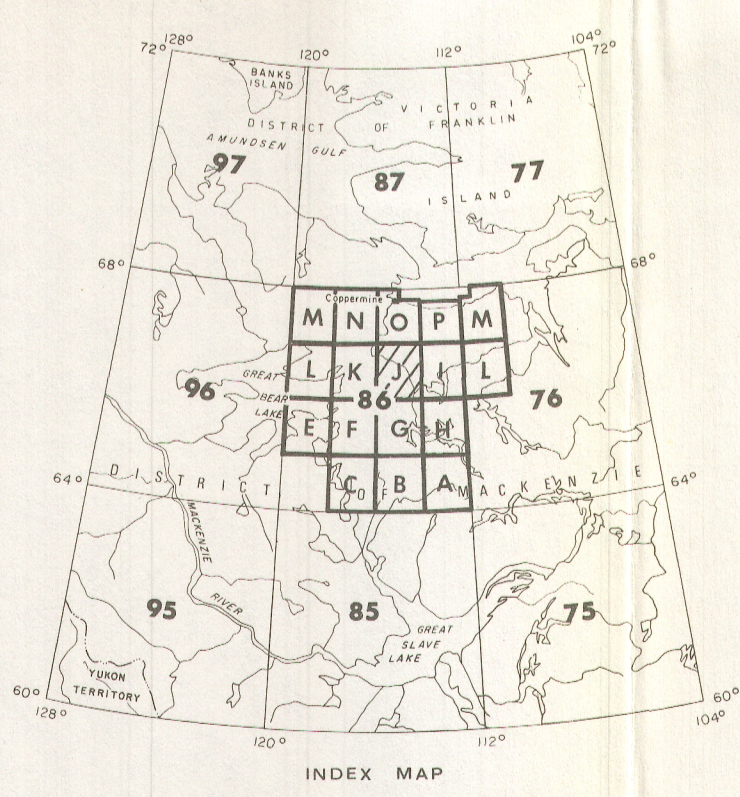
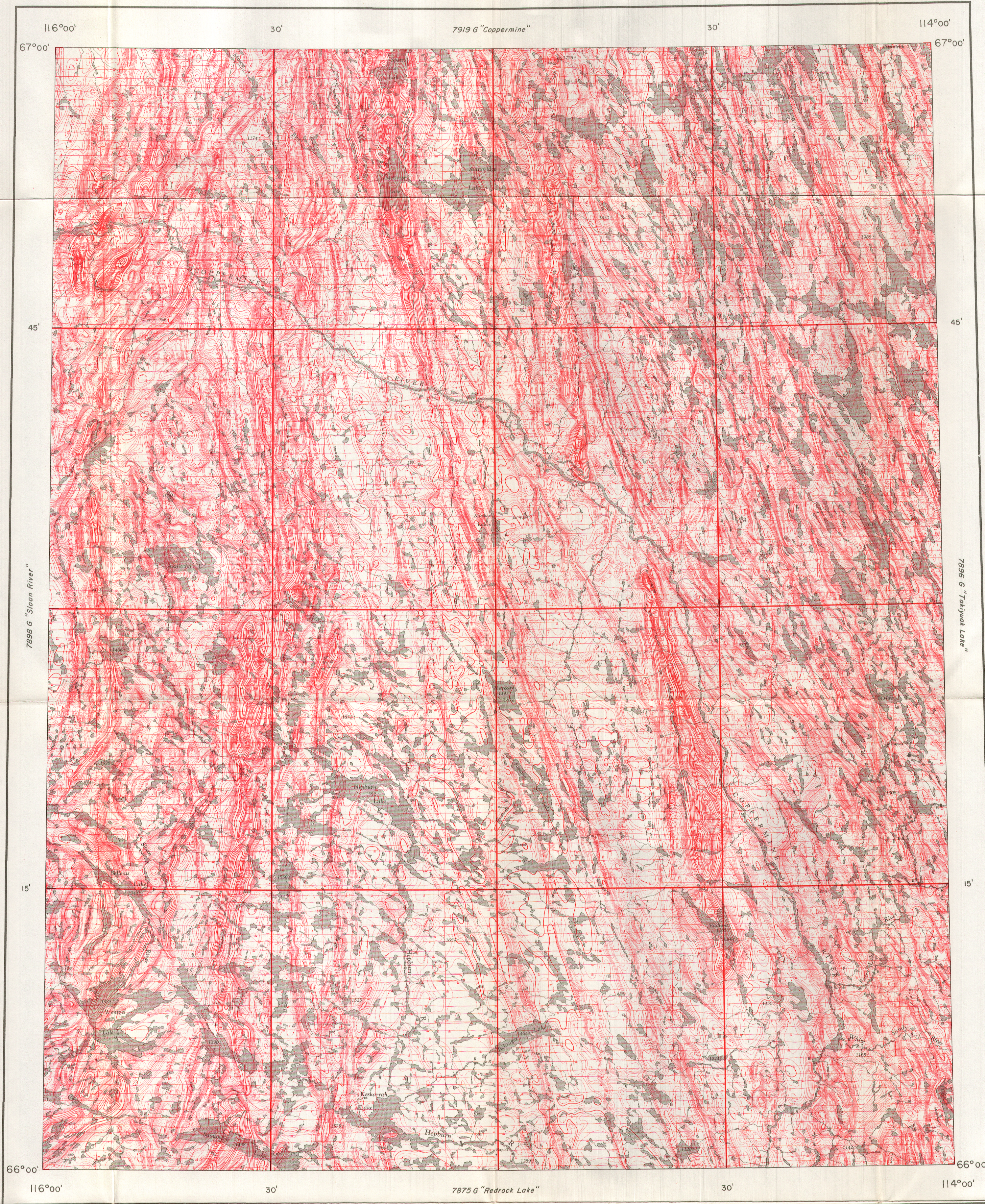


GEOPHYSICAL SERIES (Aeromagnetic)

GEOLOGICAL SURVEY OF CANADA
DEPARTMENT OF ENERGY, MINES AND RESOURCES

SHEET 86J



MAP 7897G

HEPBURN LAKE

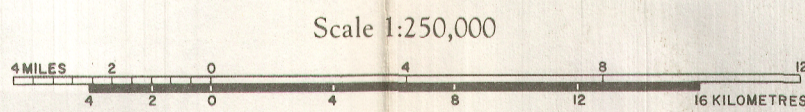
DISTRICT OF MACKENZIE
NORTHWEST TERRITORIES

Airborne magnetic survey, June 1976 to August 1977
by Geotrex Ltd., and Northway Survey Corporation Ltd.

No correction has been made for regional variation.

The topography for this map was reproduced from 1:250,000
topographical map sheets published by the Department of
Energy, Mines and Resources, Ottawa.

Flight altitude 300 metres above ground level
1 gamma = 10⁻⁹ tesla in SI units



Air photographs covering this map area may be obtained through the National Air
Photographic Library, Topographical Survey, Ottawa, Ontario.
COPIES OF THIS MAP MAY BE OBTAINED FROM THE DIRECTOR-GENERAL,
GEOLOGICAL SURVEY OF CANADA, OTTAWA.

PUBLISHED 1980

MAP 7897G
HEPBURN LAKE
NORTHWEST TERRITORIES
SHEET 86J