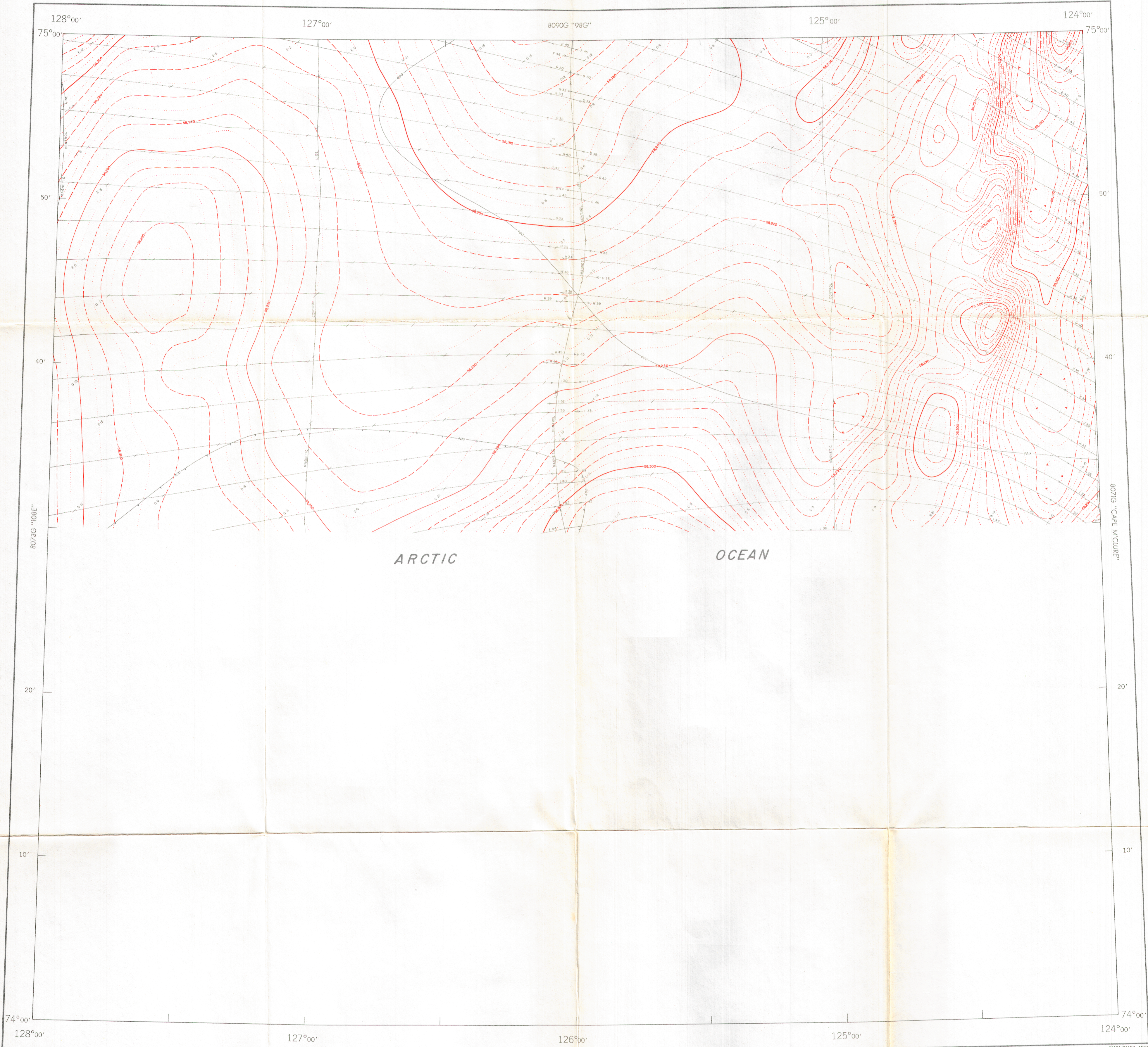




GEOLOGICAL SURVEY OF CANADA  
DEPARTMENT OF ENERGY, MINES AND RESOURCES

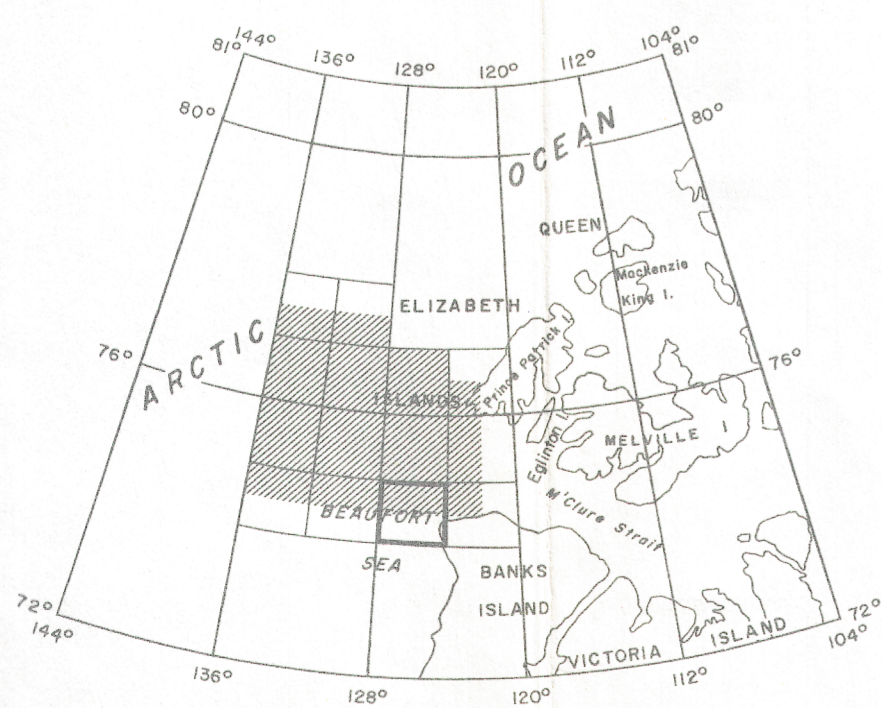
AEROMAGNETIC SERIES

SHEET 98 F



ARCTIC

OCEAN



INDEX MAP

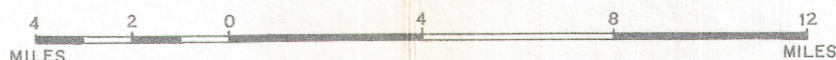
MAP 8072G

### POLAR CONTINENTAL SHELF GORE ISLANDS

DISTRICT OF FRANKLIN  
NORTHWEST TERRITORIES

Bathymetric contours in metres  
below sea-level —100—

Scale: One Inch to Four Miles =  $\frac{1}{253,440}$



COPIES OF THIS MAP MAY BE OBTAINED FROM THE  
DIRECTOR, GEOLOGICAL SURVEY OF CANADA, OTTAWA.

ISOMAGNETIC LINES (absolute total field)

- 500 gammas .....
- 100 gammas .....
- 50 gammas .....
- 10 gammas .....
- 5 gammas .....
- Magnetic Depression .....
- Flight line .....

Flight altitude: 1000 feet above sea-level.  
No correction has been made for regional variation.  
Airborne Magnetic Survey, flown April 1968  
by Survair Ltd., Ottawa.

Decca navigation (Eglinton Island Decca Chain, 1968) was used to direct  
the course of the aircraft and to determine its track. Details available  
from Polar Continental Shelf Project, Department of Energy, Mines and  
Resources, Ottawa.  
Lambert Conformal Projection—standard parallels 74°02'30" and 77°12'30".

GEOPHYSICS PAPER 8072

GORE ISLANDS

POLAR CONTINENTAL SHELF  
NORTHWEST TERRITORIES

SHEET 98 F

PUBLISHED 1969