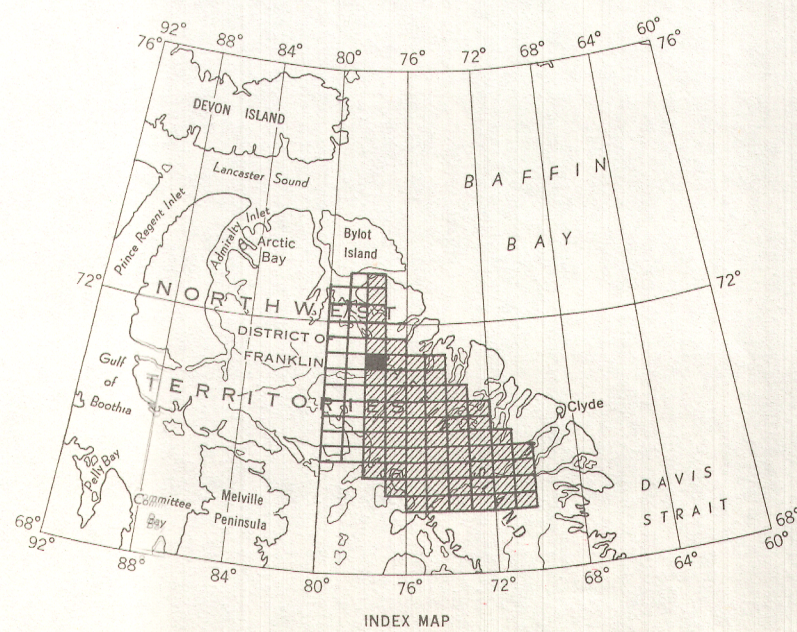
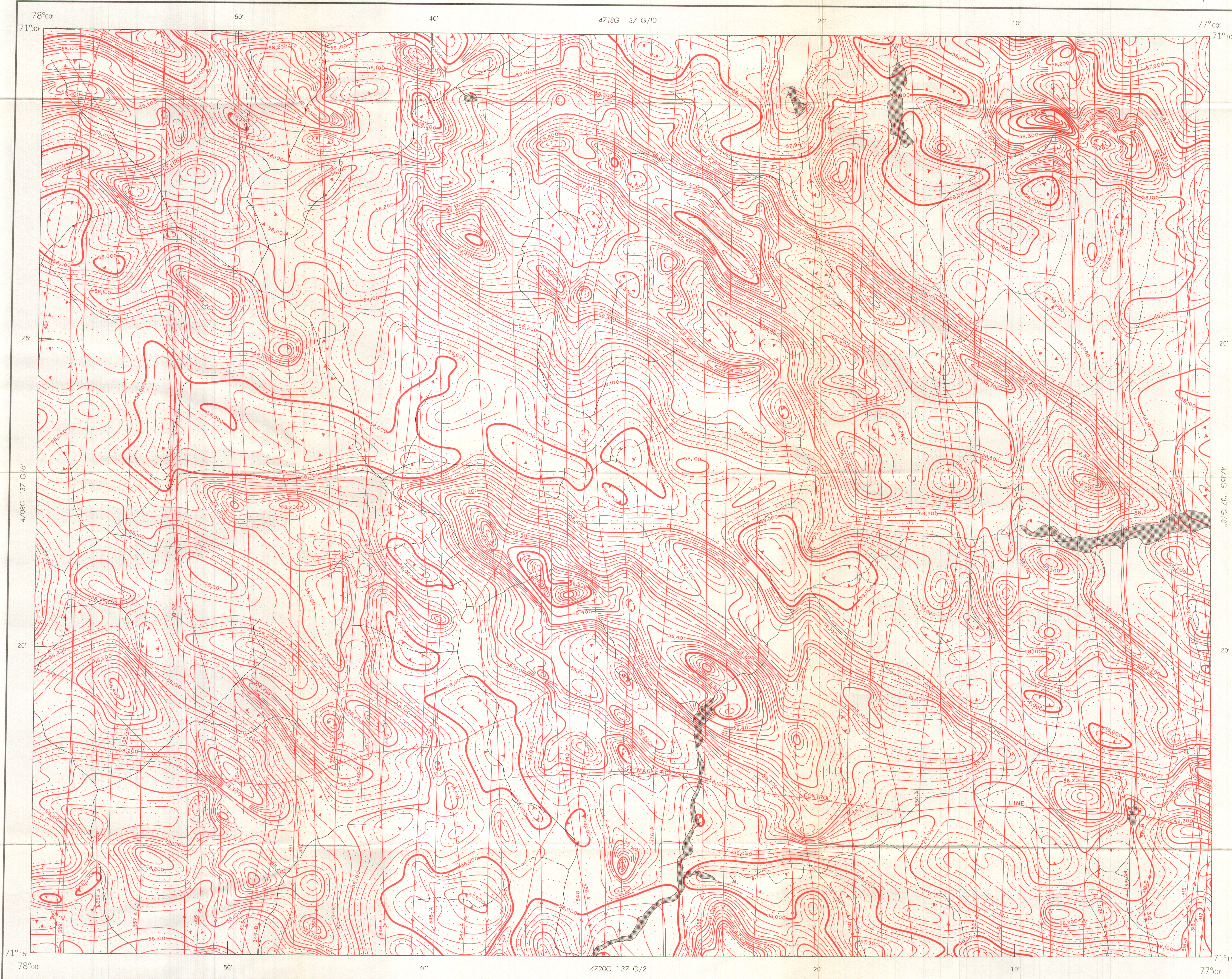


GEOLOGICAL SURVEY OF CANADA
DEPARTMENT OF ENERGY, MINES AND RESOURCES

AEROMAGNETIC SERIES

SHEET 37 $\frac{G}{7}$



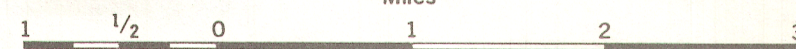
ISOMAGNETIC LINES (absolute total field)
500 gammas
100 gammas
20 gammas
10 gammas
Magnetic depression
Flight lines
Flight altitude: 1000 feet above ground level

MAP 4719G

37 $\frac{G}{7}$

DISTRICT OF FRANKLIN
NORTHWEST TERRITORIES

Scale: One Inch to One Mile = $\frac{1}{63,360}$
Miles



Air photographs covering this map-area may be obtained through the National Air Photographic Library, Topographical Survey, Ottawa, Ontario.

Airborne magnetic Survey, August 1967 Sept 1970,
by Aero Photo Inc.

No correction has been made for regional variation.

The planimetry for this map was obtained from
advance information supplied by the Department of
Energy, Mines and Resources

The magnetic data on this map were compiled from information recorded along the flight lines shown. The anomalies expressed by the magnetic contours are dependent on the variable magnetic intensities of the underlying rocks, and may be due to conditions near, or at unknown depths below the surface. High magnetic anomalies normally indicate the presence of basic rocks, such as diabase, gabbro, or serpentinite, which have a relatively high iron content; but in special instances may be due, or partly due, to concentrations of magnetic minerals. By means of the magnetic anomalies, various rock bodies or structural features, such as faults or folds, may be traced into, or across, areas of low or no outcrops. In many instances, however, no interpretation of particular anomalies may be possible without further geological information.

GEOPHYSICS PAPER 4719

NORTHWEST TERRITORIES

SHEET 37 $\frac{G}{7}$

PUBLISHED, 1972