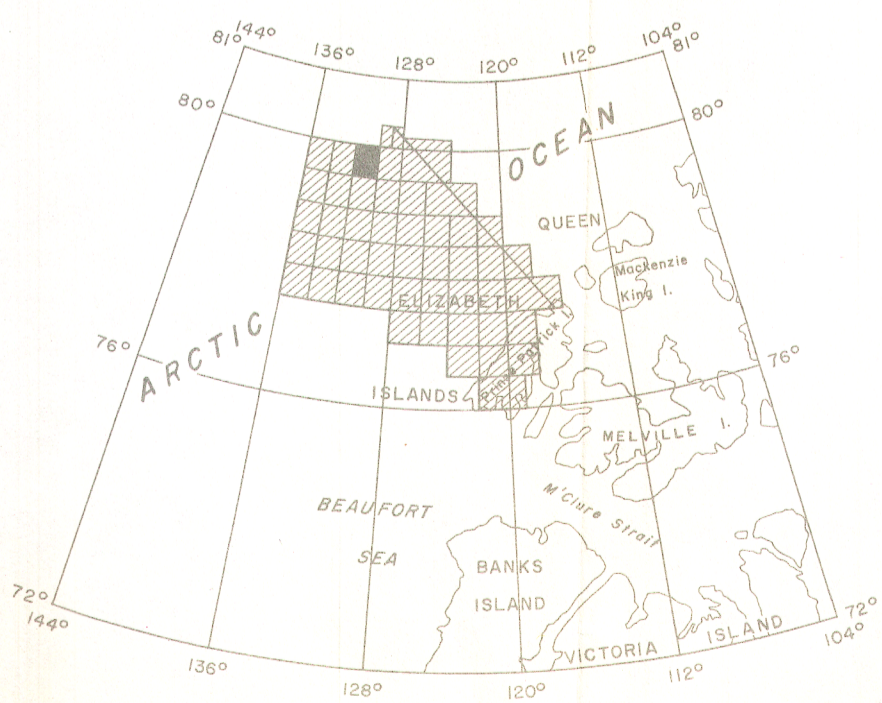


Joins Map 4928G, "109 NE"

Joins Map 4928G, "109 NE"

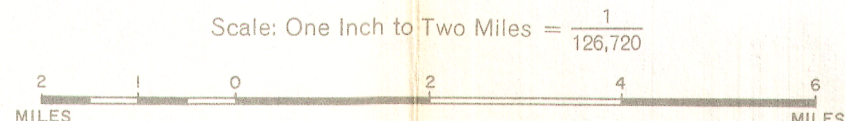
Joins Map 4922G, "109 SW"

PUBLISHED 1967



INDEX MAP

MAP 4927G  
**POLAR CONTINENTAL SHELF**  
SHEET 109 <sup>H</sup>/<sub>NW</sub>  
DISTRICT OF FRANKLIN  
NORTHWEST TERRITORIES



COPIES OF THIS MAP MAY BE OBTAINED FROM THE DIRECTOR, GEOLOGICAL SURVEY OF CANADA, OTTAWA.

- ISOMAGNETIC LINES (absolute total field)
- 500 gammas
- 100 gammas
- 50 gammas
- 10 gammas
- 5 gammas
- Magnetic Depression
- Flight Line

Flight altitude: 1000 feet above sea-level.  
No correction has been made for regional variation.  
Airborne Magnetic Survey, May 1966 to May 1967  
by Spartan Air Services Ltd., Ottawa.  
Decca navigation was used in order to direct the course of the aircraft and to determine its track for accurate navigation. The Decca lanes as shown on this map are the theoretical positions of the Decca lattice for the Cape Androsen Decca Chain 1965-66 and indicate the approximate track of the survey aircraft. The position of the magnetic control lines, as established from recorded Decca fixes, indicate the actual track of the survey aircraft. For details, see Cape Androsen Decca Chain, 1965-66, Computing Devices of Canada Ltd., Ottawa. Lambert Conformal Projection—standard parallels 76°46'30" and 79°49'30".