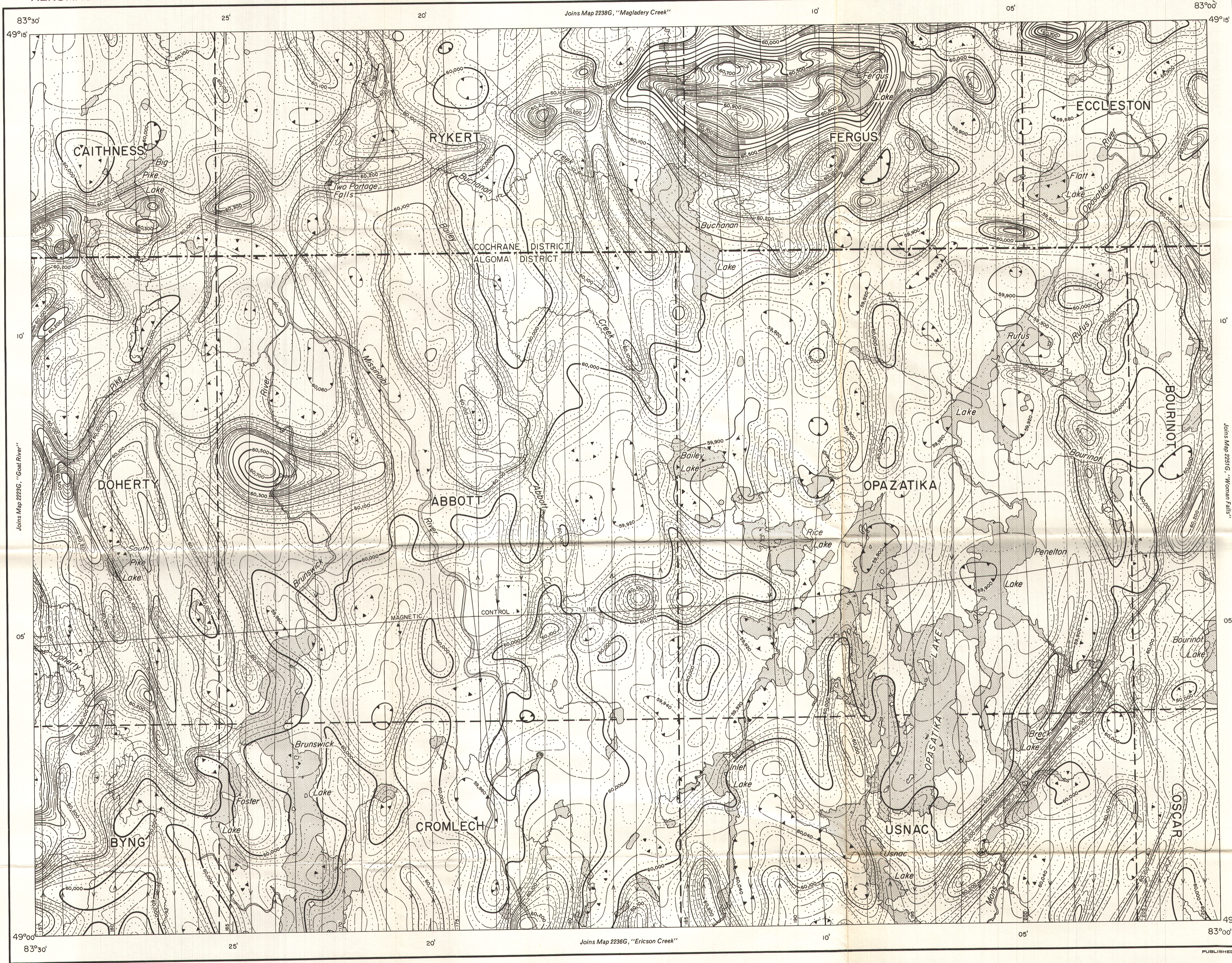


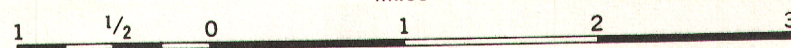
AEROMAGNETIC SERIES



MAP 2237 G

OPASATIKA LAKE
ALGOMA and COCHRANE DISTRICTS
ONTARIO

Scale: One Inch to One Mile = $\frac{1}{63,360}$
Miles



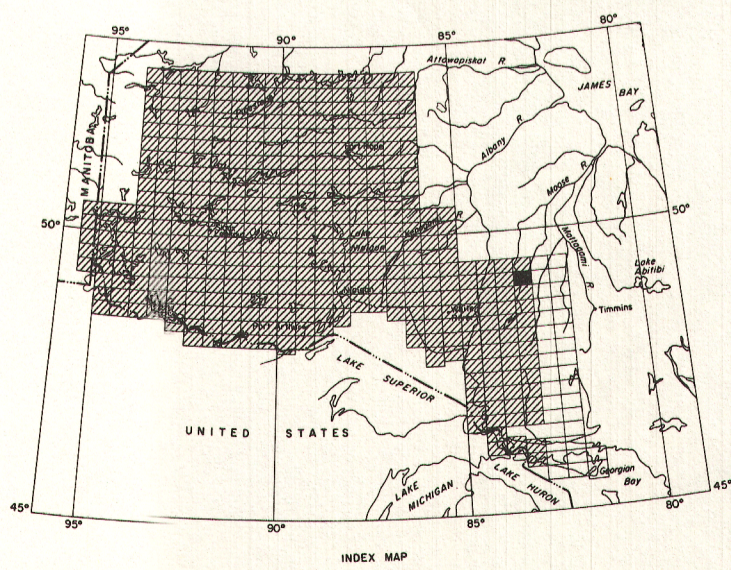
Airborne Magnetic Survey, October 1962 to May 1963
by Spartan Air Services Ltd.

No correction has been made for regional variation.

The planimetry for this map was obtained from
topographical map sheets published by the
Department of Mines and Technical Surveys and
the Ontario Department of Lands and Forests.

The magnetic data on this map were compiled from information recorded along the flight lines shown. The anomalies expressed by the magnetic contours are dependent on the variable magnetic intensities of the underlying rocks, and may be due to conditions near, or at unknown depths below the surface. High magnetic anomalies normally indicate the presence of basic rocks, such as diabase, gabbro, or serpentine, which have a relatively high iron content, but in special instances may be due, or partly due, to concentrations of magnetic ore minerals. By means of the magnetic anomalies, various rock bodies or structural features, such as faults or folds, may be traced into, or across, areas of few or no outcrops. In many instances, however, no interpretation of particular anomalies may be possible without further geological information.

GEOPHYSICS PAPER 2237
OPASATIKA LAKE
ONTARIO
SHEET 42 ^G/₃



INDEX MAP