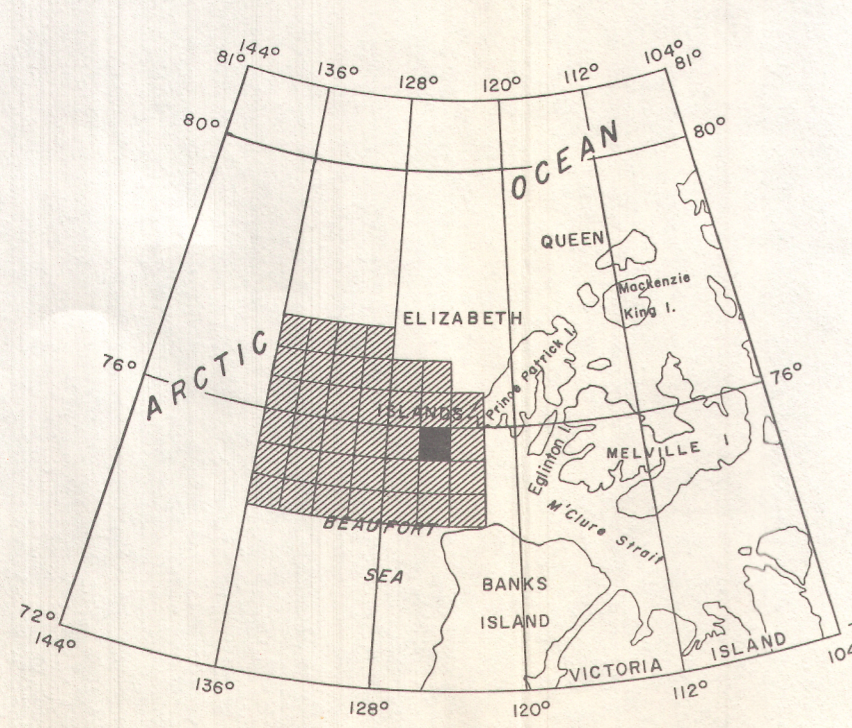


PUBLISHED 1968



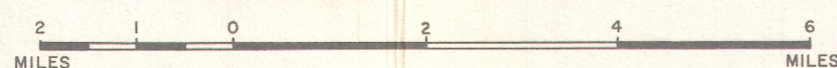
MAP 5402G

POLAR CONTINENTAL SHELF
SHEET 98 ^G/_{NE}

DISTRICT OF FRANKLIN
NORTHWEST TERRITORIES

Bathymetric contours in metres
below sea-level — 100

Scale: One Inch to Two Miles = $\frac{1}{126,720}$



COPIES OF THIS MAP MAY BE OBTAINED FROM THE
DIRECTOR, GEOLOGICAL SURVEY OF CANADA, OTTAWA.

ISOMAGNETIC LINES (absolute total field)

- 500 gammas
- 100 gammas
- 50 gammas
- 10 gammas
- 5 gammas
- Magnetic Depression
- Flight Line

Flight altitude: 1000 feet above sea-level.
No correction has been made for regional variation.
Airborne Magnetic Survey, flown April 1968
by Survair Ltd., Ottawa.

Decca navigation (Eglington Island Decca Chain, 1968) was used to direct the course of the aircraft and to determine its track. Details available from Polar Continental Shelf Project, Department of Energy, Mines and Resources, Ottawa.
Lambert Conformal Projection—standard parallels 74°02'30" and 77°12'30".

GEOPHYSICS PAPER 5402
POLAR CONTINENTAL SHELF
NORTHWEST TERRITORIES
SHEET 98 ^G/_{NE}